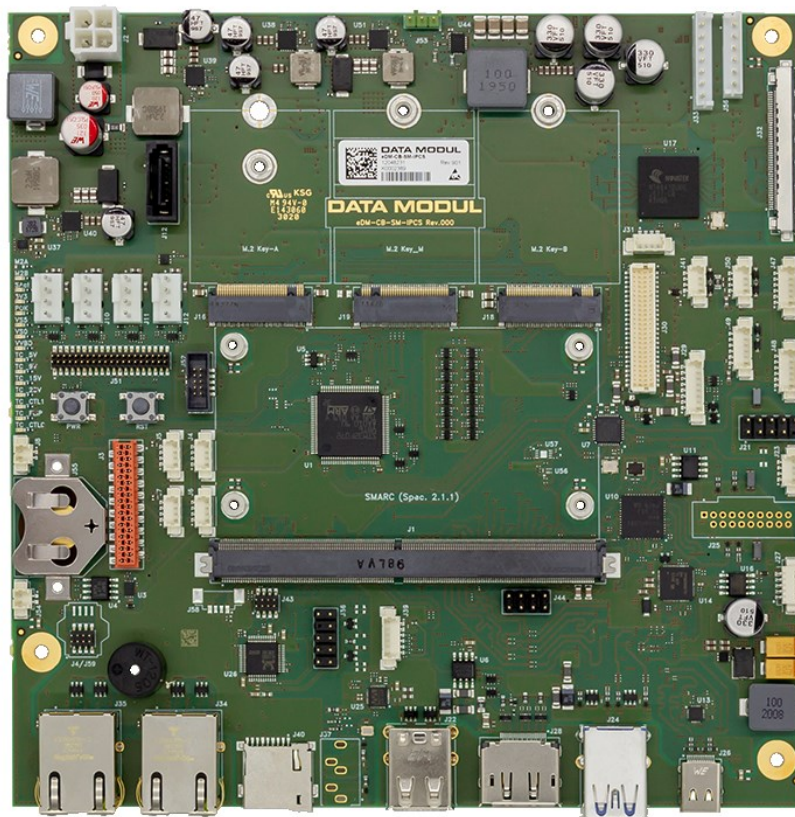


Datasheet

eDM-CB-SM-IPCS



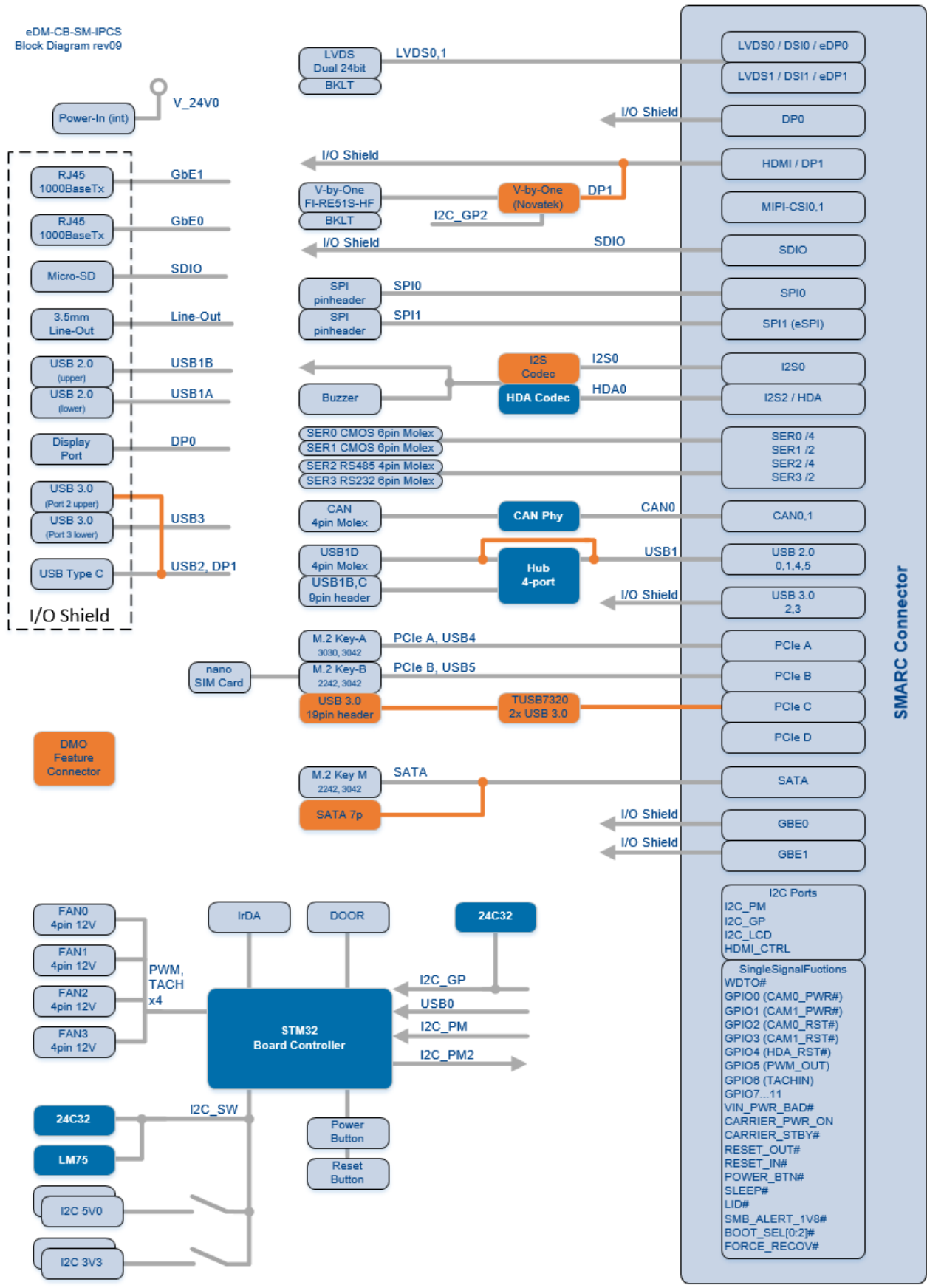
SMARC 2.0 carrier board

- > Compliant to SMARC 2.0 specification
- > Support of x86 and ARM based SMARC 2.0 modules
- > V-by-One
- > USB-C
- > 2x Gigabit Ethernet RJ45

TECHNICAL INFORMATION

Formfactor	Thin Mini-ITX
Dimension	170 x 170 mm
Ethemet	2x Gigabit Ethernet RJ45
Display / Monitor interfaces	1x dual channel 24 bit LVDS shared with eDP 1x LVDS backlight 1x V-By-One 1x V-By-One backlight 1x DisplayPort
M.2	1x M.2 Key-B 2242 / 3042 (1x PCIe, 1x USB 2.0, nano SIM socket) 1x M.2 Key-A 2230 / 2242 / 3042 (1x PCIe, 1x USB 2.0) 1x M.2 Key-M 2242 / 3042 (SATA)
Feature Connector	DATA MODUL feature connector
Storage	microSD card slot 1x SATA
Sound	1x Audio Jack HD Audio I2S Buzzer
USB	1x USB 3.0 (option + 1x USB 3.0) 2x USB 3.0 internal (on request) 2x USB 2.0 3x USB 2.0 internal 1x USB-C with PD 3.0 and DisplayPort Alternate Mode
I/O interfaces	2x UART (SER0 with handshake signals) 1x RS485 1x RS232 1x CAN 4x FAN 2x SPI
Power Supply	24 V only
Temperature	Commercial grade 0 to +60°C operating, -15°C to +60°C storage
Humidity	Relative humidity operating: < 90% non-condensing
Safety, Shock and Vibration	Designed to meet EN60950, EN62638, UL60950, IEC/EN60068-2-27 and IEC/EN60068
Available Certificates	RoHS, REACH, UL

BLOCK DIAGRAM



© 2020 DATA MODUL AG. All rights reserved. All data is for information purposes only. Although all the information contained within this document is carefully checked no guarantee of correctness is implied or expressed. All brand or product names are trademarks or registered trademarks of their respective owners.

ORDERING INFORMATION

Article	Part Nr.	Description
eDM-CB-SM-IPCS	12048231	Carrier Board for SMARC 2.0 modules