

# eDM-pITX-BT



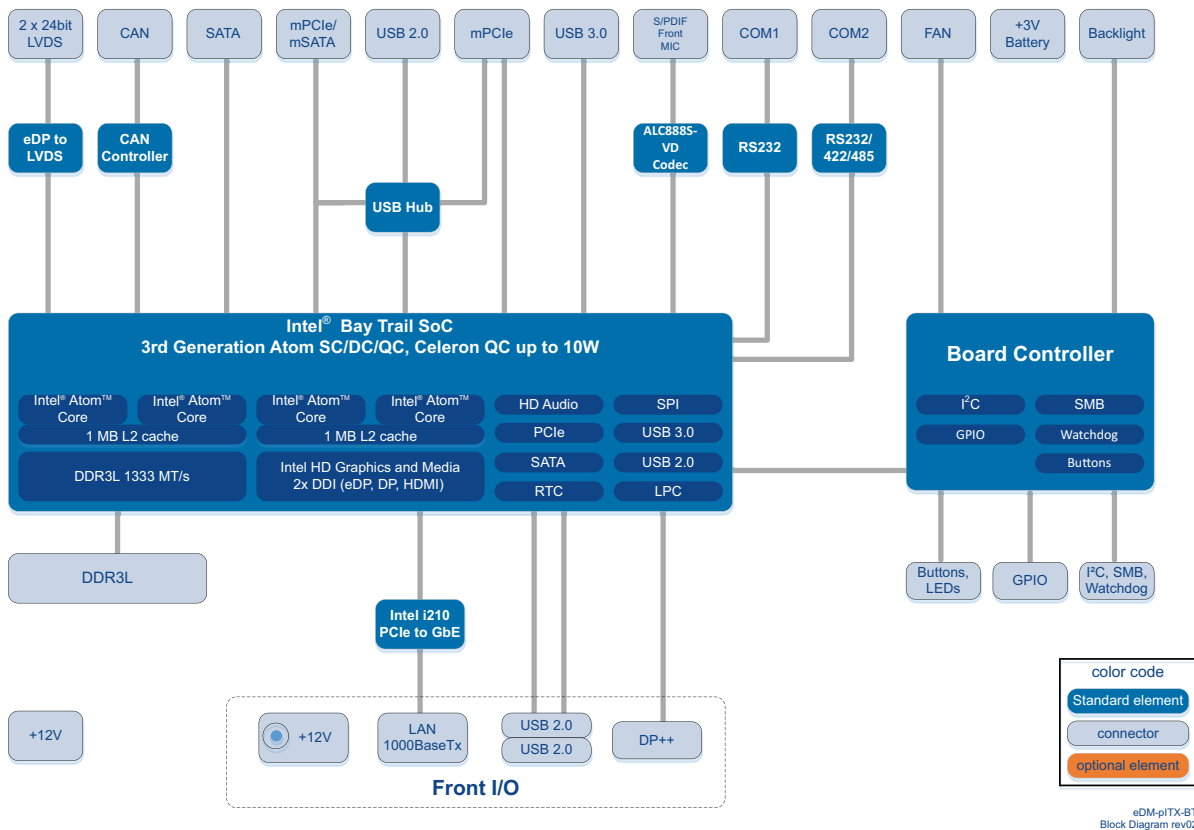
## Features

- » *Industrial passive cooled Pico-ITX*
- » *Based on 3rd Gen. Intel® Atom™/Celeron®*
- » *Up to 4 Gbyte DDR3L RAM memory*
- » *2 x Mini PCIe (Half-Size)*
- » *CAN 2.0 onboard*
- » *Longevity up to 7 years*

# Technical Information

Formfactor	Pico-ITX, 100mm x 72mm
CPU	Intel® Atom™ E3815, 1.46GHz, 5W TDP Intel® Celeron J1900, 2.42GHz, 10W TDP Other CPU versions on request
Memory	up to 4 GByte onboard DDR3L, memory, 1600 MT/s
Chipset	Integrated in SoC
Graphics	Intel® HD Graphics with support for: DirectX11, OpenGL 3.0, OpenCL 1.2, OpenGLES 2.0, Full HW acceleration for decode/encode of MPEG2, H.264, MVC, Dual simultaneous display support
Display Interfaces	1 x DisplayPort up to 2560 x 1600 Pixel, 1 x Dual Channel 24 Bit LVDS up to, 1920 x 1200 Pixel, 1 x Backlight Control, 1x Onboard Panel Power +5V/+12V DC
Ethernet	1 x Gbit Ethernet 10/100/1000BaseT, Intel Gigabit Ethernet i210 controller
Sound	Intel High Definition Audio (Intel HD Audio)
I/O Interfaces	<b>Front:</b> 2 x USB 2.0, 1 x Power Jack, 1 x DisplayPort, 1 x Gbit Ethernet 10/100/1000BaseT <b>Internal:</b> 1 x SATA 2.0 (3GB/s), 1 x Mini PCIe / mSATA (half size), 1 x Mini PCIe (half size), 1 x USB 2.0, 1 x USB 3.0, 8 x GPIO, 1 x I <sup>2</sup> C, 1 x SMB, 1 x CAN 2.0, 1 x RS 232, 1 x RS 422/485, 1 x FAN connector, RTC battery
Board Controller	Watchdog, Manufacturing and Board Information, Board Statistics, BIOS Setup Data Backup, Power Loss Control
BIOS	AMI Aptio® 2.X (UEFI) BIOS, SM-BIOS, BIOS Update, Logo Boot, Quiet Boot, HDD Password
Power Type	+12 V DC (+/-5%)
Operating Systems	Microsoft® Windows®, Win 7 (32bit and 64bit), Win 8.X, Win Embedded Standard 7 (WES7), Win Embedded Standard 8 (WES8), Win Embedded Compact 7 (WEC7), Win Embedded Compact 2013 (WEC2013), Linux
Operating Temperature	0°C ... +60°C, -40°C ... +85°C (on request)
Humidity Operating	Operating: 10 - 90% r. H. non cond

# Block Diagramm



# Ordering Information

Model Name	Part Nr.	Description
eDM-pITX-BT-E3815-1GB	12012500	Pico-ITX SBC with Intel® Atom™ E3815 1.46GHz, 1GB DDR3L Memory onboard
eDM-pITX-BT-E3815-4GB	12012319	Pico-ITX SBC with Intel® Atom™ E3815 1.46GHz, 4GB DDR3L Memory onboard
eDM-pITX-BT-J1900-2GB	12012322	Pico-ITX SBC with Intel® Celeron™ J1900 2.0GHz, 2GB DDR3L Memory onboard
eDM-pITX-BT-J1900-4GB	12012321	Pico-ITX SBC with Intel® Celeron™ J1900 2.0GHz, 4GB DDR3L Memory onboard
eDM-pITX-BT-HSP	12012502	Heatspreader for Pico-ITX eDM-pITX-BT. Stand-offs with 2.7mm bore hole.
eDM-pITX-BT-CSP	12012503	Passive heat sink for Pico-ITX eDM-pITX-BT. Stand-offs with 2.7mm bore hole. (*To use this item it's necessary to order also eDM-pITX-BT-HSP)
TS16GMSM610	12012814	Half-Size mSATA Flash Drive 16GB MLC (0 - 70°C)
TS32GMSM610	12012815	Half-Size mSATA Flash Drive 32GB MLC (0 - 70°C)

© 2015 DATA MODUL AG. All rights reserved. All data is for information purposes only. Although all the information contained within this document is carefully checked no guarantee of correctness is implied or expressed. All brand or product names are trademarks or registered trademarks of their respective owners.