



easyKnob

Touch display meets
physical control



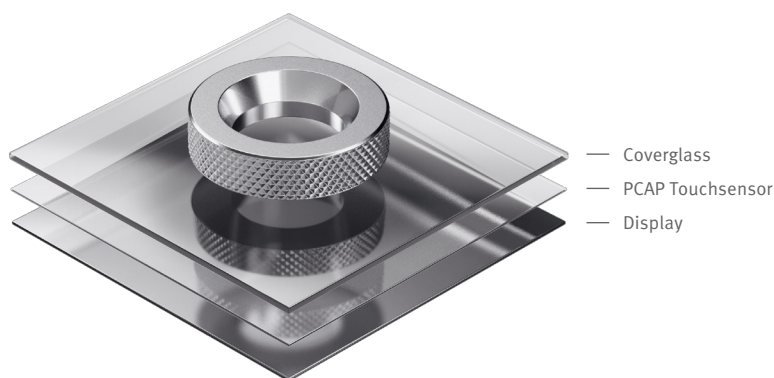


The best of both worlds: our easyKnob technology

In addition to classic touch input, smart additional features create extended operating options for touch displays. With our easyKnob technology, we combine the advantages of a touch panel with a mechanical rotary knob for even more precise operation. The technology not only provides more flexibility in the GUI, but also optimises system interaction thanks to haptic feedback, especially in areas such as medical technology, where HMI interaction sometimes has to take place without eye contact.

Functionality of the easyKnob

Based on our modular concept, we offer a selection of knob variants and can also develop customised rotary knobs on request. Thanks to the encoder function, we enable simple integration into a complex housing without the need to break through the glass and use state-of-the-art touch controller functions to set the touch settings. Once the rotary control has been integrated and initialised, the touch sensor registers the input made using the knob and ensures reliable event execution thanks to precise input compared to traditional touch operation.



Advantages at a glance

- Convenience and safety thanks to integrated control knob
- Supplied as a complete preassembly with optimum performance
- More GUI flexibility thanks to the combination of easyKnob technology and touch display

Possible applications of the easyKnob technology

- Agricultural and construction machinery
- Audio & Sound Engineering
- Entertainment sector
- Medical technology
- Professional kitchen



For further information contact your DATA MODUL sales partner sales@data-modul.com
or visit our website www.data-modul.com