

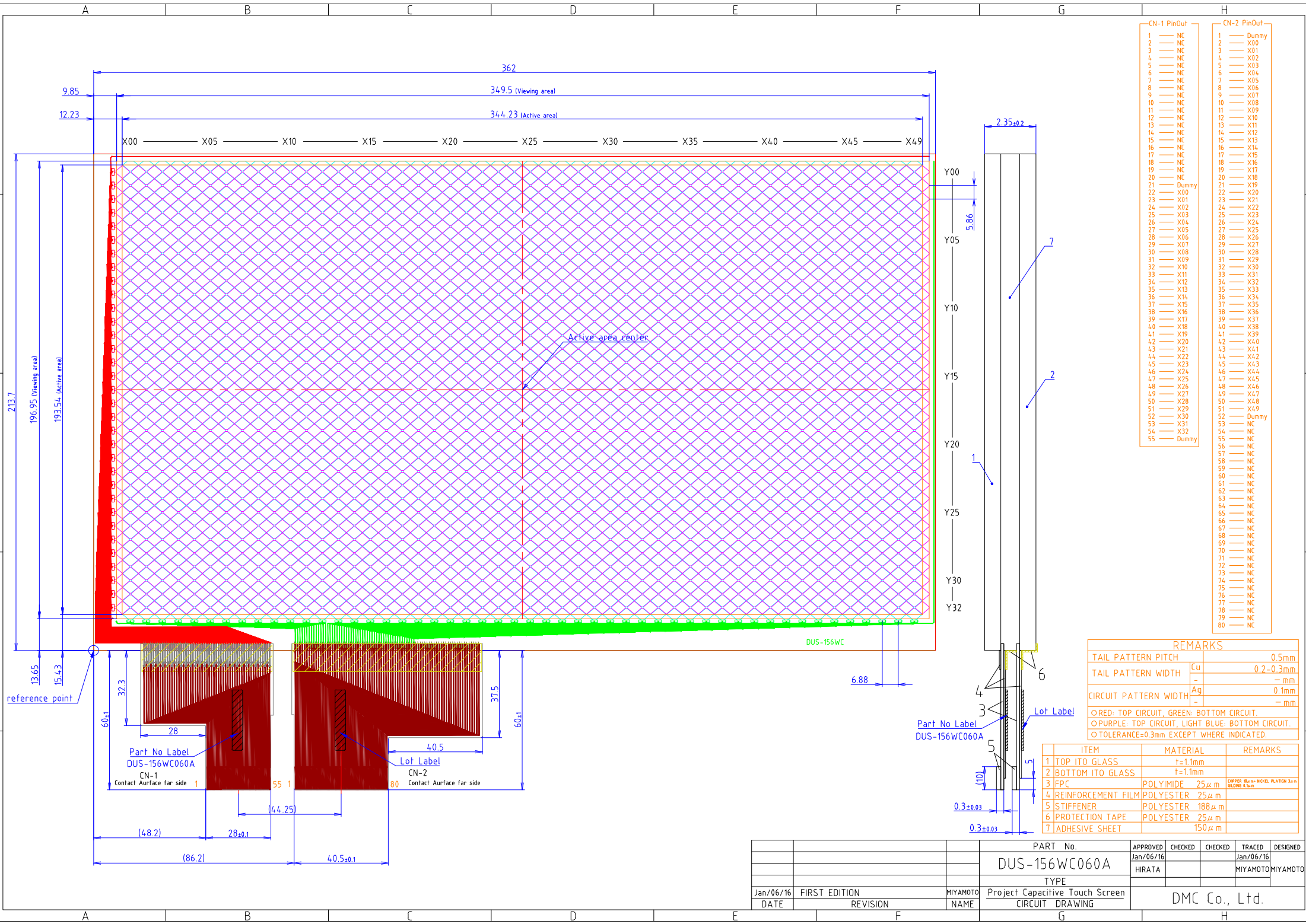
# Specification

## **DUS-156WC060A**

**15.6 inch wide Projected Capacitive Touch Screen**

Revision: 000

Date: 2016-01-06

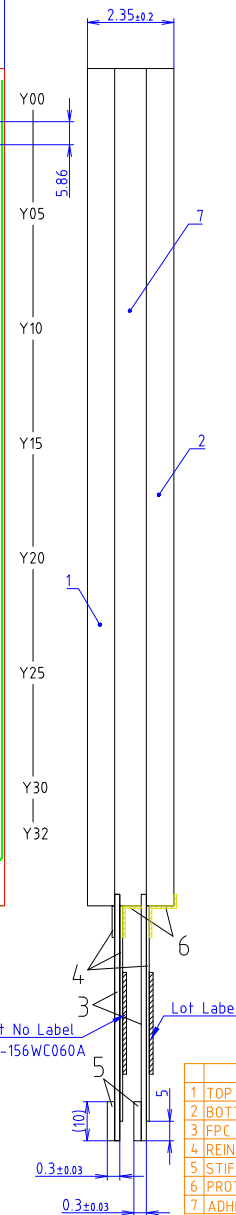
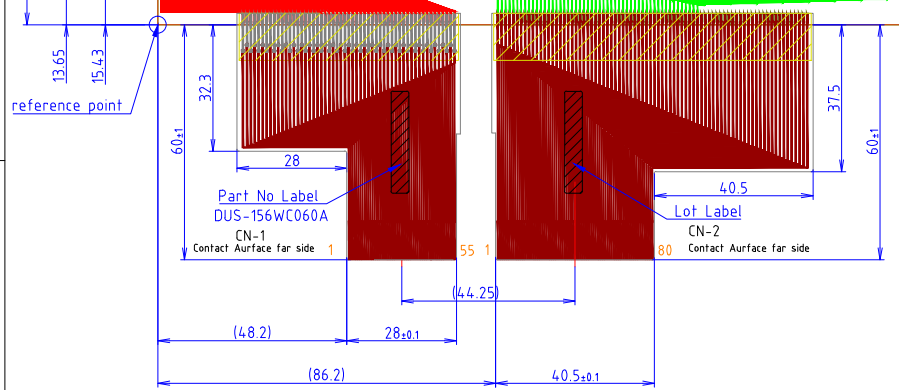


CN-1 PinOut		CN-2 PinOut	
1	NC	1	Dummy
2	NC	2	X00
3	NC	3	X01
4	NC	4	X02
5	NC	5	X03
6	NC	6	X04
7	NC	7	X05
8	NC	8	X06
9	NC	9	X07
10	NC	10	X08
11	NC	11	X09
12	NC	12	X10
13	NC	13	X11
14	NC	14	X12
15	NC	15	X13
16	NC	16	X14
17	NC	17	X15
18	NC	18	X16
19	NC	19	X17
20	NC	20	X18
21	Dummy	21	X19
22	X00	22	X20
23	X01	23	X21
24	X02	24	X22
25	X03	25	X23
26	X04	26	X24
27	X05	27	X25
28	X06	28	X26
29	X07	29	X27
30	X08	30	X28
31	X09	31	X29
32	X10	32	X30
33	X11	33	X31
34	X12	34	X32
35	X13	35	X33
36	X14	36	X34
37	X15	37	X35
38	X16	38	X36
39	X17	39	X37
40	X18	40	X38
41	X19	41	X39
42	X20	42	X40
43	X21	43	X41
44	X22	44	X42
45	X23	45	X43
46	X24	46	X44
47	X25	47	X45
48	X26	48	X46
49	X27	49	X47
50	X28	50	X48
51	X29	51	X49
52	X30	52	Dummy
53	X31	53	NC
54	X32	54	NC
55	Dummy	55	NC
		56	NC
		57	NC
		58	NC
		59	NC
		60	NC
		61	NC
		62	NC
		63	NC
		64	NC
		65	NC
		66	NC
		67	NC
		68	NC
		69	NC
		70	NC
		71	NC
		72	NC
		73	NC
		74	NC
		75	NC
		76	NC
		77	NC
		78	NC
		79	NC
		80	NC

REMARKS	
TAIL PATTERN PITCH	0.5mm
TAIL PATTERN WIDTH	Cu 0.2-0.3mm - mm
CIRCUIT PATTERN WIDTH	Ag 0.1mm - mm
○RED: TOP CIRCUIT, GREEN: BOTTOM CIRCUIT. ○PURPLE: TOP CIRCUIT, LIGHT BLUE: BOTTOM CIRCUIT. ○TOLERANCE=0.3mm EXCEPT WHERE INDICATED.	

ITEM	MATERIAL	REMARKS
1 TOP ITO GLASS	t=1.1mm	
2 BOTTOM ITO GLASS	t=1.1mm	
3 FPC	POLYIMIDE 25μm	COPPER 80μm NICKEL PLATION 30μm GILDING 2.5μm
4 REINFORCEMENT FILM	POLYESTER 25μm	
5 STIFFENER	POLYESTER 188μm	
6 PROTECTION TAPE	POLYESTER 25μm	
7 ADHESIVE SHEET	150μm	

PART No.			APPROVED	CHECKED	CHECKED	TRACED	DESIGNED
DUS-156WC060A			Jan/06/16	HIRATA		MIYAMOTO	MIYAMOTO
TYPE							
Project Capacitive Touch Screen							
CIRCUIT DRAWING							
Jan/06/16	FIRST EDITION	MIYAMOTO					
DATE	REVISION	NAME					
			DMC Co., Ltd.				



DUS-156WC

reference point

Active area center

Part No Label  
DUS-156WC060A

Lot Label

Part No Label  
DUS-156WC060A  
CN-1

Lot Label  
CN-2

Contact Surface far side 1

Contact Surface far side 80

**DATA MODUL Aktiengesellschaft**

Landsberger Str. 322  
80687 Munich, Germany  
Tel. +49-89-5 60 17-0  
Fax +49-89-5 60 17-119  
[www.data-modul.com](http://www.data-modul.com)

**Logistics, Production & Services:**

DATA MODUL Weikersheim GmbH  
Lindenstrasse 8  
DE-97990 Weikersheim - Germany  
Phone: +49-7934-101-0  
Fax: +49-7934-101-101

**DATA MODUL's worldwide offices**

can be found on our website:  
[www.data-modul.com/eu/contact-worldwide.html](http://www.data-modul.com/eu/contact-worldwide.html)

