

TO : Customer

DATE : 2022.03.24

**GREEN C&C TECH Co.,Ltd
75, Saneop-ro 92beon-gil,
Gwonseon-gu, Suwon-si, Gyeonggi-do
KOREA 16643
TEL : 82-31-373-3623~3625
FAX : 82-31-373-3610**

DOCUMENTATION FOR APPROVAL

**PRODUCT : LED BACKLIGHT DRIVER (RoHS)
MODEL NAME : GH765A(A6)
GCCT NAME : GCCT765AF**

APPROVAL	CHECKED	WRITTEN

PLEASE RETURN ONE DOCUMENT AFTER APPROVED SIGN.

GREEN C&C TECH	LED DRIVER SPECIFICATION GH765A(A6)	Publishing Date	2018.04.26
		Reforming Date	2022.03.24

NO	Date	REVISION	Page
1	2022.03.24	- Changed Label - Changed Part List	5 6,7,14

REVISION HISTORY

REV.														
Page														
REV.	1	0	0	0	1	1	1	0	0	0	0	0	0	1
Page	1	2	3	4	5	6	7	8	9	10	11	12	13	14
										Page Rev.	1	Page	1	

GREEN C&C TECH	LED DRIVER SPECIFICATION GH765A(A6)	Publishing Date	2018.04.26
		Reforming Date	

1. APPLICATION

This Document Specified The Detailed Product Requirement of LED driver
GH765A(A6)

2. SUITABLE LOAD

LCD MODULE : 4 Strings LED BLU TFT LCD

3. ELECTRICAL CHARATERISTICS

3.1. Absolute Maximum Ratings

Item	Symbol	Spec.	Unit	Remarks
Input Voltage 1	Vin	10.8~26.4	V	
Input Voltage 2	ON/OFF	5.25	V	
Operating Temperature	Top	-20~70	℃	
Storage Temperature	Tstg	-30~80	℃	
Relative Humidity	RH	80	%	

3.2. Control Signal

PIN No.	Symbol	Status	Action	Remarks
CN1 #9	ON/OFF	HIGH	LED - ON	2.4 ~ 5.25V
		LOW	LED - OFF	0.8 V Max

GREEN C&C TECH	LED DRIVER SPECIFICATION GH765A(A6)	Publishing Date	2018.04.26
		Reforming Date	

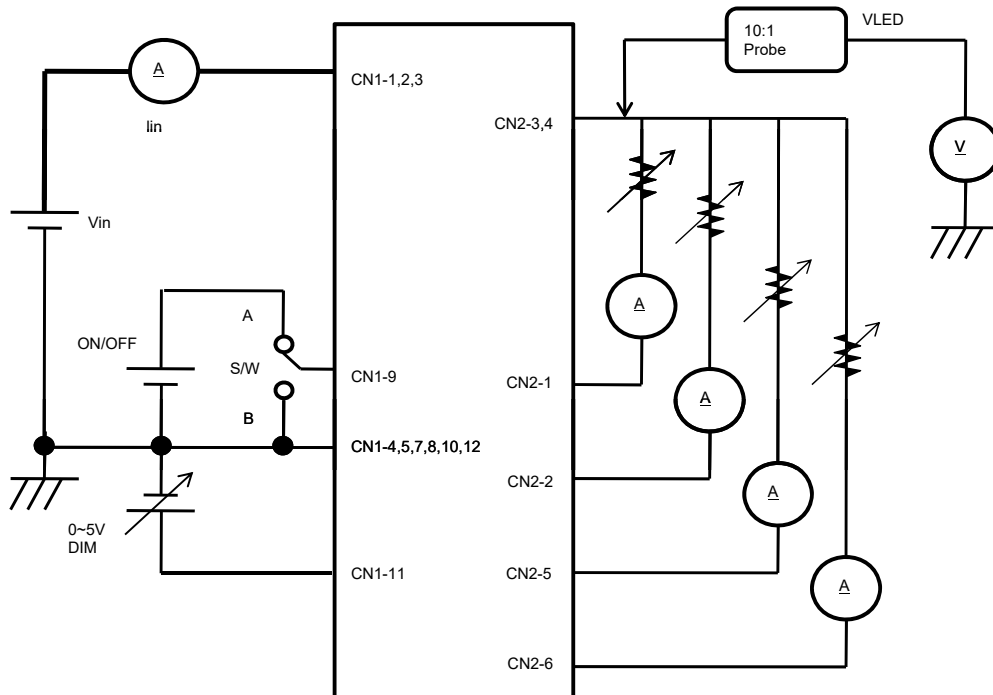
3.3. Output Characteristics

Item	Sym.	Condition	Min.	Typ.	Max.	Unit
Input Voltage	Vin	-	10.8	12.0	26.4	Vdc
Input Current	Iin	Vin=12V, Dim=0V	-	-	1.3	A
Output Current	Iout (Max)	Vin=12V, Dim=0V	90.0	100.0	110.0	mAmean
	Iout (Min)	Vin=12V, Dim=5V	15.0	20.0	25.0	
Backlight ON/OFF Control	ON	-	2.4	-	5.0	Vdc
	OFF	-	-0.3	-	0.8	

* Output Voltage is greater than Input Voltage for at least 3V or more.

3.4. Test Circuit

- S/W : A --> BLU ON
- B --> BLU OFF



GREEN C&C TECH	LED DRIVER SPECIFICATION GH765A(A6)	Publishing Date Reforming Date	2018.04.26
----------------	--	-----------------------------------	------------

4. INTERFACE

4.1. CN1 Connector (Input) : 12505WR-12A (YEONHO) or Equivalent

PIN No.	Symbol	Description
1,2,3	VIN	Voltage Input : 12V, 24V (typ.)
4,5,7,8,10,12	GND	Ground
6	N.C	No Connection
9	ON/OFF	LED DRIVER ON/OFF Control
11	DIM	0V(MAX)~5V(MIN)

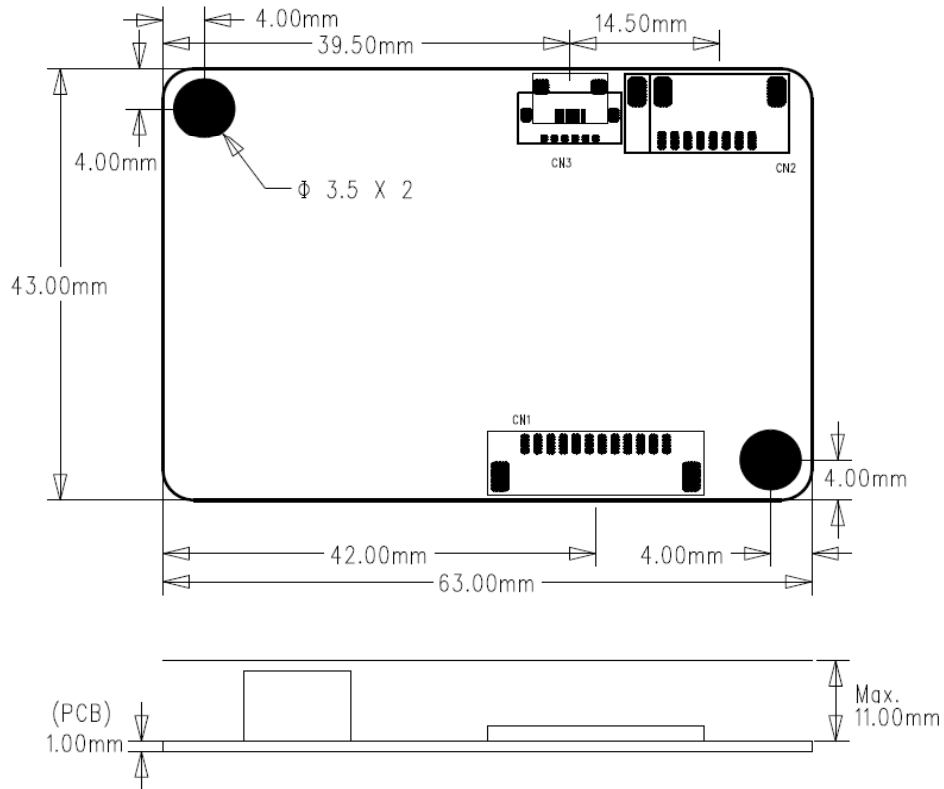
4.2. CN2 Connector (Output) : 12507WR-06L (YEONHO) or Equivalent

PIN No.	Symbol	Description
1	FB1	Feedback 1 (Return 1)
2	FB2	Feedback 2 (Return 2)
3	VLED	System Output
4	VLED	System Output
5	FB3	Feedback 3 (Return 3)
6	FB4	Feedback 4 (Return 4)

GREEN C&C TECH	LED DRIVER SPECIFICATION GH765A(A6)	Publishing Date	2018.04.26
		Reforming Date	2022.03.24


5. APPERANCE (Unit : mm)

(Tolerance : +0.8mm, -0.2mm)



6. NOTATION OF LOT NUMBER

MARKING:BOTTOM

	GH765A(A6)	→ ① USER MODEL CODE
	<u>G</u> <u>20</u> <u>01</u> <u>A</u>	→ ② PRODUCTION MANAGEMENT CODE
	<u>0001</u> <u>AF</u>	→ ③ SERIAL NUMBER OR CONTROL CODE

①	GH765A(A6)	: USER MODEL CODE
	G	: MANUFACTURER CODE (GREEN C&C TECH)
	20	: YEAR OF PRODUCT
②	01	: WEEK OF PRODUCT 01,02,03,04,...52
	A	: PUBLICATION NUMBER A,B,C,...,Z,0,1,2,...,9
③	0001	: SERIAL NUMBER 0001,0002.....9998,9999
	AF	: GCCT CONTROL MODEL CODE

GREEN C&C TECH	LED DRIVER SPECIFICATION GH765A(A6)	Publishing Date	2018.04.26
		Reforming Date	2022.03.24

7. PART LIST

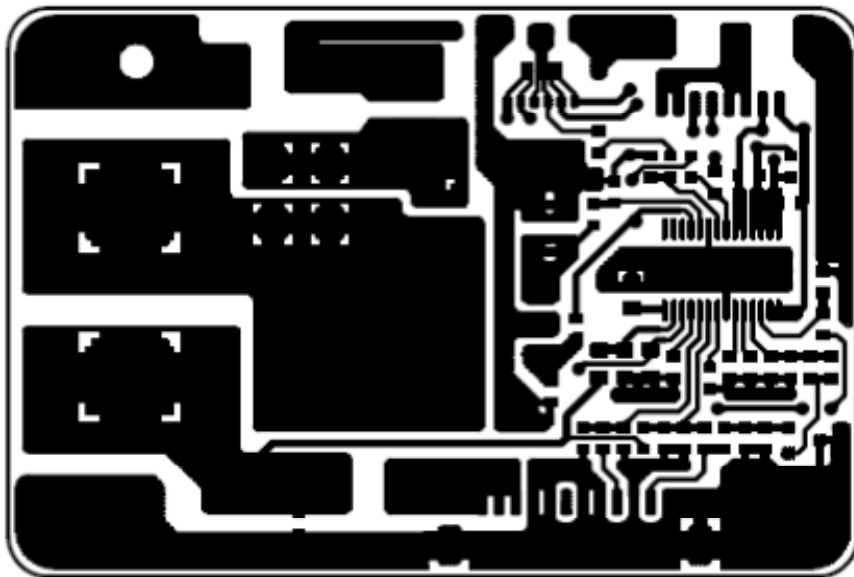
SYMBOL	NAME	1st		2nd	
		TYPE No	MAKER	TYPE No	MAKER
U1	IC	MP3391EF	MPS		
Q1	FET	AP9997GH	APEC	Equivalent	
Q2	TR	MMBT2907A	DIODES	Equivalent	
D1	DIODE	B2100	DIODES	Equivalent	
C1	C-ELEC	BXJ Series 220uF/35V	SAMYOUNG	Equivalent	
C16		BXJ Series 10uF/100V	SAMYOUNG	"	
C2,C4	MLCC	CL21A225KA	SEMCO	Equivalent	
C3		CL21B105KB	"	"	
C5,C6,C8		CL10A105KA	"	"	
C7		CL10B102KB	"	"	
C9		CL10B104KB	"	"	
C14		CL10C101JB	"	"	
C15		CL31B105KC	"	"	
R1	CHIP-R	RM10JTN100	TA-I Tech	Equivalent	
R3,R12		RM06JTN224	"	"	
R4,R5		RM06JTN513	"	"	
R6,R9,R19, R25,R26		RM06JTN104	"	"	
R7		RM06JTN124	"	"	
R10		RM06JTN273	"	"	
R11		RM06JTN102	"	"	
R13		RM06JTN184	"	"	
R14		RM06JTN393	"	"	
R15		RM06JTN333	"	"	
R16		RM06JTN363	"	"	
R17		RM06JTN101	"	"	
R18		RM06JTN100	"	"	
R20,R21		RL12FTNR200	"	"	
R27		RM06JTN362	"	"	

GREEN C&C TECH	LED DRIVER SPECIFICATION GH765A(A6)	Publishing Date	2018.04.26
		Reforming Date	2022.03.24

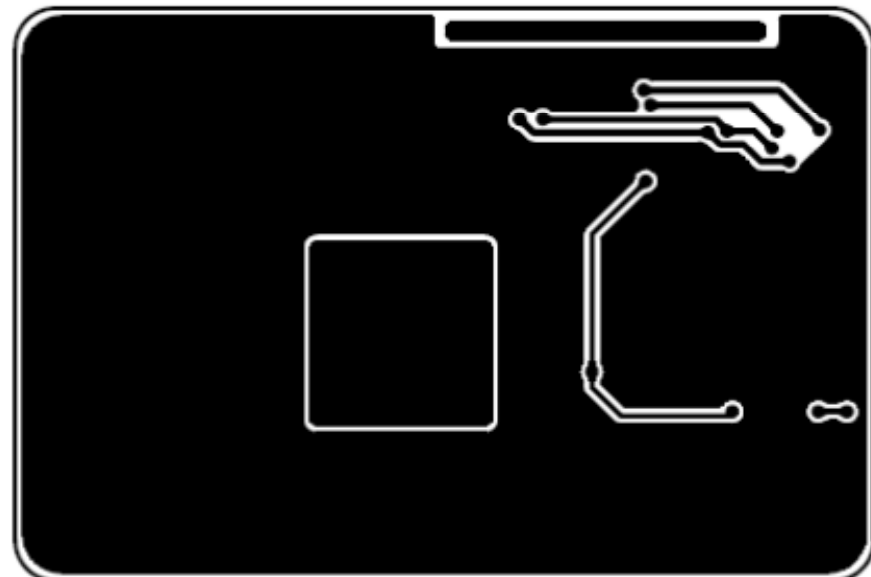
SYMBOL	NAME	1st		2nd	
		TYPE No	MAKER	TYPE No	MAKER
F1	FUSE	CCF1N4	KOA	CB61F4A	Cooper Bussmann
		451004	LITTELFUSE	453004	LITTELFUSE
L1	Inductor	SPI-1260SDN-470	SEJIN	Equivalent	
L2		PNL4020-100M	Dong An Elec	"	
CN1	Connector	12505WR-12A	YEONHO	Equivalent	
CN2		12507WR-06L	YEONHO	"	
PCB	PCB	GH765A REV0.0	SEOKANG	GH765A REV0.0	TECOS
		GH765A REV0.0	JDM	GH765A REV0.0	SKY TECHNOLOGY

GREEN C&C TECH	LED DRIVER SPECIFICATION GH765A(A6)	Publishing Date Reforming Date	2018.04.26
----------------	--	-----------------------------------	------------

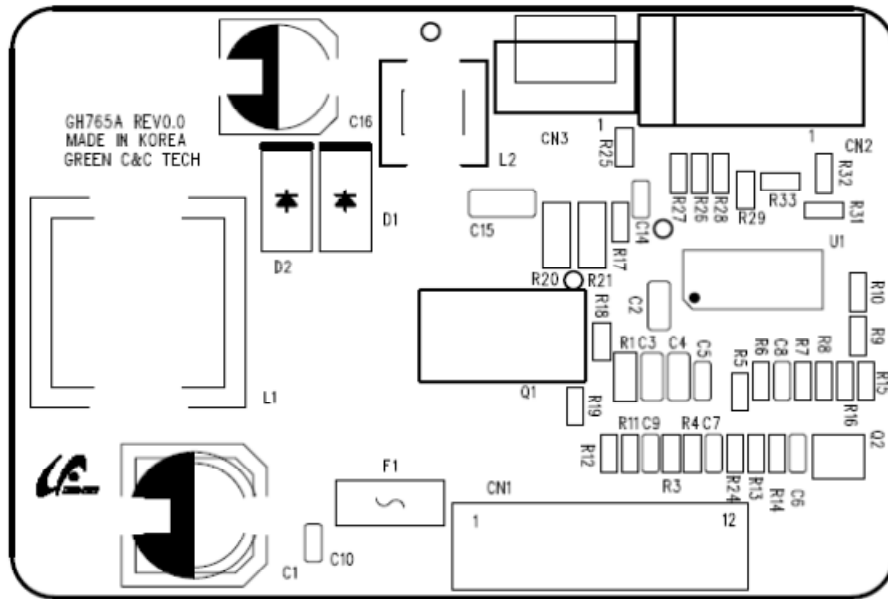
8. PCB LAYOUT



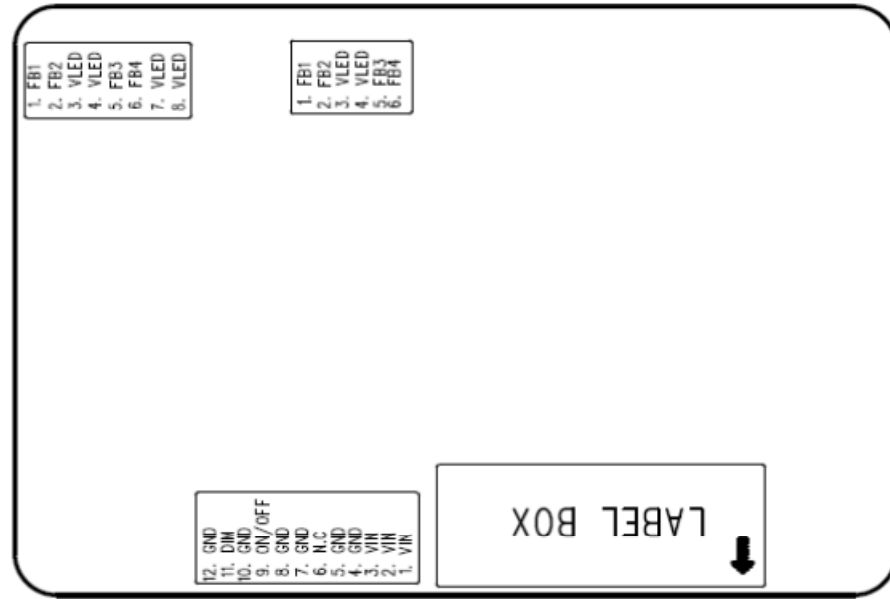
TOP LAYER



BOTTOM LAYER

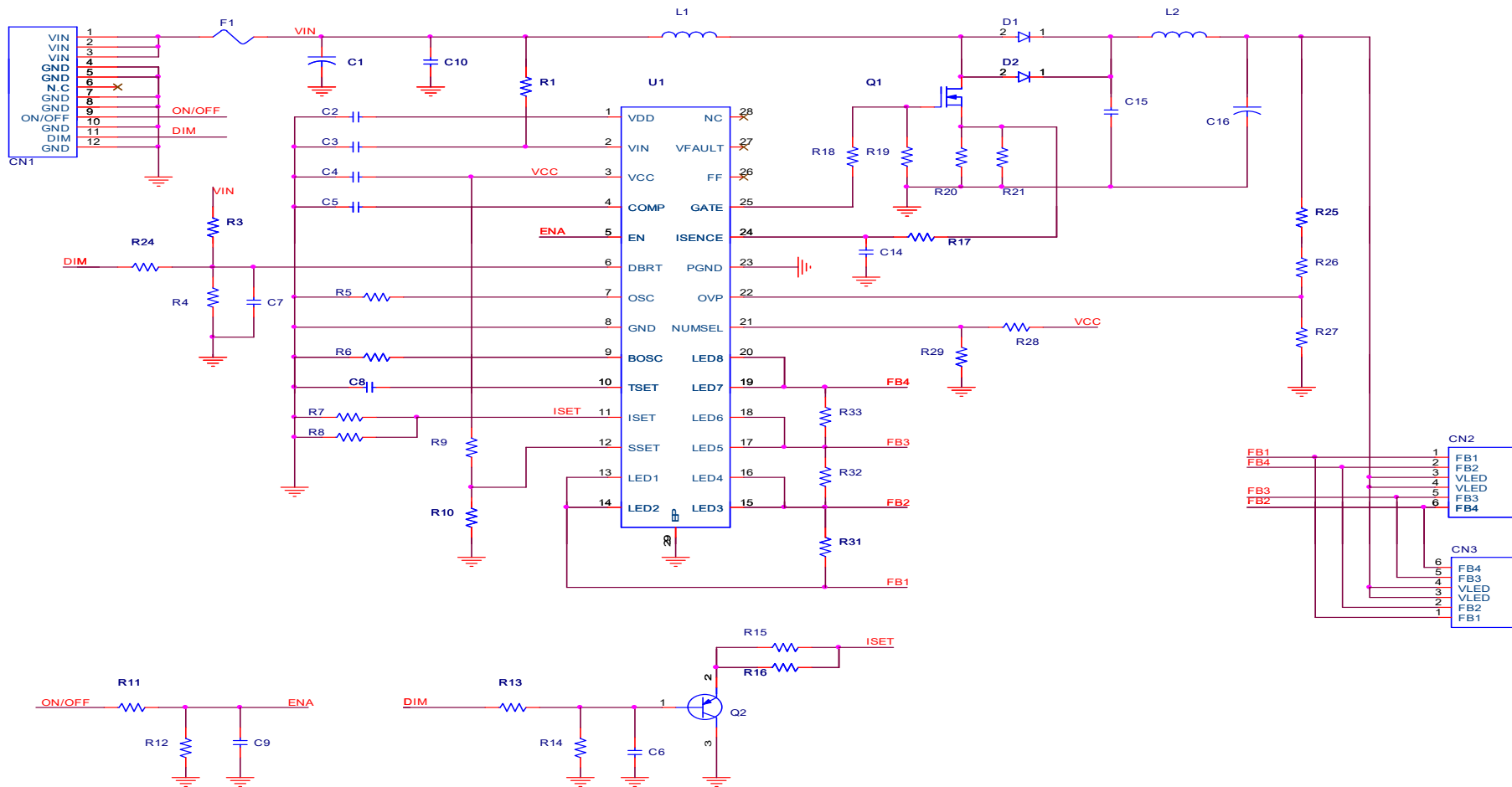


SILK SCREEN TOP



SILK SCREEN BOTTOM

9. CIRCUIT



GREEN C&C TECH	LED DRIVER SPECIFICATION GH765A(A6)	Publishing Date Reforming Date	2018.04.26
----------------	--	-----------------------------------	------------

10. RELIABILITY TEST SPEC.

NO.	ITEM	Conditions and Method
1	High Temperature Storage Test	Temp : 85 °C Duration : 250hrs
2	Low Temperature Storage Test	Temp : -40 °C Duration : 250hrs
3	High Temperature High Humidity Operation Test	Temp : 70 °C Humidity : 95%RH Duration : 250hrs
4	Signal On/Off Test	Temp : Normal Temperature On-Off Signal On 10sec / Off 10sec Power on full Load 30,000 cycles
5	Thermal Shock Test	Temp : -40 °C ↔ 100 °C, 100 cycles (30min) (30min)
6	High Temperature Operation Test	Temp : 70 °C Duration : 250hrs
7	Low Temperature Operation Test	Temp : -20 °C Duration : 250hrs

GREEN C&C TECH	LED DRIVER SPECIFICATION GH765A(A6)	Publishing Date	2018.04.26
		Reforming Date	


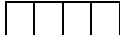
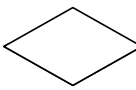

11. FLOW CHART

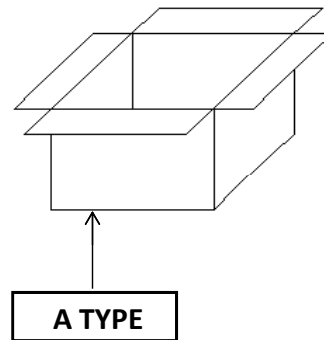
MODEL (TYPE)	GH765A(A6)	REVISION	5
WRITER	J.K.HYUN	FLOW CHART	
FLOW CHART	PROCESS	EQUIPMENTS	Remark
	Raw Material		PART LIST
	Solder Printing	Cream-solder Printer	
	Surface Mounting	Low-high Mounter	
	Reflow Soldering (CTQ)	Reflower	
	Visual Inspection (AOI)	Microscope, Vision-Master	
	Label attachment	Marking	
	Preparing Process		
	Soldering by Hand for Discrete Parts		
	Spreading Silicon	Silicon Dispenser	
	Insert Lead Parts		
	Wave-Soldering	Wave-Soldering Machine	
	Visual Inspection		
	PCB Division		
	Aging	Power Supply, Aging Box	2hrs
	Electrical Characteristics inspection	Testing System, Testing JIG	
	Insulator Attachment		
	Bar-Code Reading	Bar-Code Reader	
	Package		
	Outgoing Inspection	Testing System, Testing JIG	List of Inspection
	Shipping		
Based on Standard Rule	GCCT765AF		

GREEN C&C TECH	LED DRIVER SPECIFICATION GH765A(A6)	Publishing Date	2018.04.26
		Reforming Date	

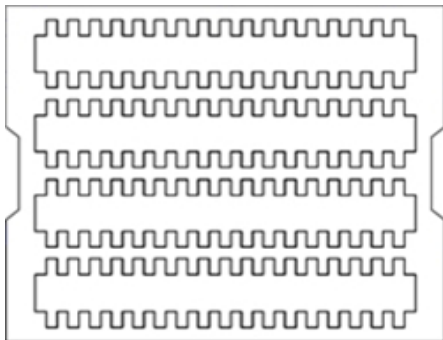
12. PACKING

12.1. BOX

 LEAD-FREE			 L/C NO : C/T NO : MADE IN KOREA													
<table border="1"> <tr><td>1. Customer</td><td></td></tr> <tr><td>2. PART NAME</td><td>GH765A(A6)</td></tr> <tr><td>3. PO NO</td><td></td></tr> <tr><td>4. Q'ty</td><td>000 EA</td></tr> <tr><td>5. Date</td><td>00.00.00</td></tr> <tr><td>6. LOT NO</td><td></td></tr> <tr><td></td><td></td></tr> </table>	1. Customer			2. PART NAME	GH765A(A6)	3. PO NO		4. Q'ty	000 EA	5. Date	00.00.00	6. LOT NO				
1. Customer																
2. PART NAME	GH765A(A6)															
3. PO NO																
4. Q'ty	000 EA															
5. Date	00.00.00															
6. LOT NO																



12.2. TRAY



SYMBOL	TYPE NO
PACKING-TRAY	393*324*53
PACKING-BOX	415*340*332
PACKING-PAD	400*325*5

1 TRAY : 68EA (GR2052)
 1BOX : 6 TRAY (408EA) - A TYPE

GREEN C&C TECH	LED DRIVER SPECIFICATION GH765A(A6)	Publishing Date	2018.04.26
		Reforming Date	2022.03.24

13. Material list for safety GH765A(A6)

SYMBOL	NAME	TYPE No	MANUFACTURER	DESCRIPTION
F1	FUSE	CCF1N4	KOA	UL FILE NO. : E171861
		451004	LITTELFUSE	UL FILE NO. : E10480
		453004		CSA FILE NO : LR29862
		CB61F4A	COOPER BUSSNANN	UL FILE NO. : E19180
PCB	Printed Writing Board	FR4	SEOKANG	UL FILE NO. : E150774
			JDM	UL FILE NO. : E221964
			TECOS	UL FILE NO. : E214879
			SKY TECHNOLOGY	UL FILE NO. : E513927
CN1	Connector	12505WR-12A	YEONHO	UL FILE NO. : E108706
CN2	Connector	12507WR-06L	YEONHO	UL FILE NO. : E108706