



SPECIFICATION



HSD104JXN1-A21

10.4" - HD - LVDS

Version:

Date: 11.01.2024

Note: This specification is subject to change without prior notice



Document Title	HSD104JXN1-A21 Product Information for DATA MODUL	Page No.	1 / 28
Document No.		Revision	1.0

TO : DATA MODUL

Date : Jan.11.2024

HannStar Product Information **(Formal)**

10.4” Color TFT-LCD Module **Model: HSD104JXN1-A21**

- Note: (1).Please contact HannStar Display Corp. before designing your product based on this module specification.
(2).The information contained herein is presented merely to indicate the characteristics and performance of our products. No responsibility is assumed by HannStar for any intellectual property claims or other problems that may result from application based on the module described herein.
(3).The mark “ ** ” of Model means sub-model code.

Document Title	HSD104JXN1-A21 Product Information for DATA MODUL	Page No.	2 / 28
Document No.		Revision	1.0

Record of Revisions

Rev.	Date	Sub-Model	Description of change
1.0	Jan.11.2024	-A21	Formal Product Information was first released.



Document Title	HSD104JXN1-A21 Product Information for DATA MODUL	Page No.	3 / 28
Document No.		Revision	1.0

Contents

1.0	General description	p.4
2.0	Absolute maximum ratings.....	p.5
3.0	Optical characteristics.....	p.6
4.0	Block diagram	p.10
5.0	Interface pin connection	p.12
6.0	Electrical characteristics	p.15
7.0	Reliability test items	p.20
8.0	Outline dimension	p.21
9.0	Lot mark	p.23
10.0	Package specification	p.24
11.0	General precaution	p.27

Document Title	HSD104JXN1-A21 Product Information for DATA MODUL	Page No.	4 / 28
Document No.		Revision	1.0

1.0 GENERAL DESCRIPTION

1.1 Introduction

HannStar Display model HSD104JXN1-A21 is a color active matrix thin film transistor (TFT) liquid crystal display (LCD) that uses amorphous silicon TFT as a switching device. This model is composed of a TFT LCD panel, a driving circuit and a back light system. This TFT LCD has a 10.4 inch diagonally measured active display area with HD (1024 horizontal by 768 vertical pixel) resolution.

1.2 Features

- 10.4 (4:3 diagonal) inch configuration
- 16.2M
- ROHS / Halogen Free Compliance

1.3 Applications

- TFT LCD Monitor
- Industrial Application
- Amusement
- Vehicle
-

1.4 General information

Item	Specification	Unit	
Outline Dimension	225.8(H) x 174.3(V) x 8.0(D) (Typ.)	mm	
Display area	211.2(H) x 158.48(V) (10.4" diagonal)	mm	
Number of Pixel	1024(H) x 768(V)	pixels	
Pixel pitch	0.20625(H) x 0.20625(V)	mm	
Pixel arrangement	RGB Vertical Stripe		
Display mode	Normally Black		
NTSC	70(Typ.)	%	
Surface treatment	Antiglare, Hard-Coating (3H)		
Weight	0.375	kg	
Back-light	Single LED (Side-Light type)		
Power Consumption	Logic System (White Pattern)	Logic 1.0W(typ), 2.0W(max) @V _{BVDD} =3.3V	W
	B/L System	6.144(Max.)	W

1.5 Mechanical Information

Item	Min.	Typ.	Max.	Unit	
Module Size	Horizontal (H)	225.3	225.8	226.3	mm
	Vertical (V)	173.8	174.3	174.8	mm
	Depth (D)	7.5	8.0	8.5	mm
Weight	—	375	—	g	

Document Title	HSD104JXN1-A21 Product Information for DATA MODUL	Page No.	5 / 28
Document No.		Revision	1.0

2.0 ABSOLUTE MAXIMUM RATINGS

2.1 Electrical Absolute Rating

2.1.1 TFT LCD Module

Item	Symbol	Min.	Max.	Unit	Note
Power supply voltage	V_{DVDD}	-0.5	3.96	V	
	V_{DVDD_LVDS}				
	V_{AVDD}	-0.5	14.85	V	
	V_{GH}	-0.3	42	V	
	V_{GL}	-20	0.3	V	
	$V_{GH} - V_{GL}$	12	40	V	
Logic Signal Input Level	V_{DVDD} V_{DVDD_LVDS}	-0.3	5	V	

2.2 Environment Absolute Rating

Item	Symbol	Min.	Max.	Unit	Note
Operating Temperature	T_{opa}	-30	85	°C	
Storage Temperature	T_{stg}	-30	85	°C	

Document Title	HSD104JXN1-A21 Product Information for DATA MODUL	Page No.	6 / 28
Document No.		Revision	1.0

3.0 OPTICAL CHARACTERISTICS

3.1 Optical specification

Item	Symbol	Condition	Min.	Typ.	Max.	Unit	Note	
Contrast	CR	$\Theta=0$ Normal viewing angle	600	900	—		(1)(2)	
Response time	Rising		TR+TF	—	30	40	msec	(1)(3)
	Falling							
White luminance (Center)	Y_L			500	600	—	cd/m ²	(1)(4) ($I_L=240mA$)
Color chromaticity (CIE1931)	White		W_x	0.273	0.313	0.353		(1)(4)
			W_y	0.289	0.329	0.369		
	Red		R_x	0.612	0.652	0.692		
			R_y	0.302	0.342	0.382		
	Green		G_x	0.267	0.307	0.347		
			G_y	0.579	0.619	0.659		
	Blue	B_x	0.104	0.144	0.184			
		B_y	0.053	0.093	0.133			
Viewing angle	Hor.	Θ_L	80	85	—			
		Θ_R	80	85	—			
	Ver.	Θ_U	80	85	—			
		Θ_D	80	85	—			
Brightness uniformity	B_{UNI}	$\Theta=0$ (9point)	70	80	—	%	(5)	
Optima View Direction	Free						(6)	

3.2 Measuring Condition

- Measuring surrounding : dark room
- LED current I_L : 240mA
- Ambient temperature : $25\pm 2^\circ C$
- 15min. warm-up time.

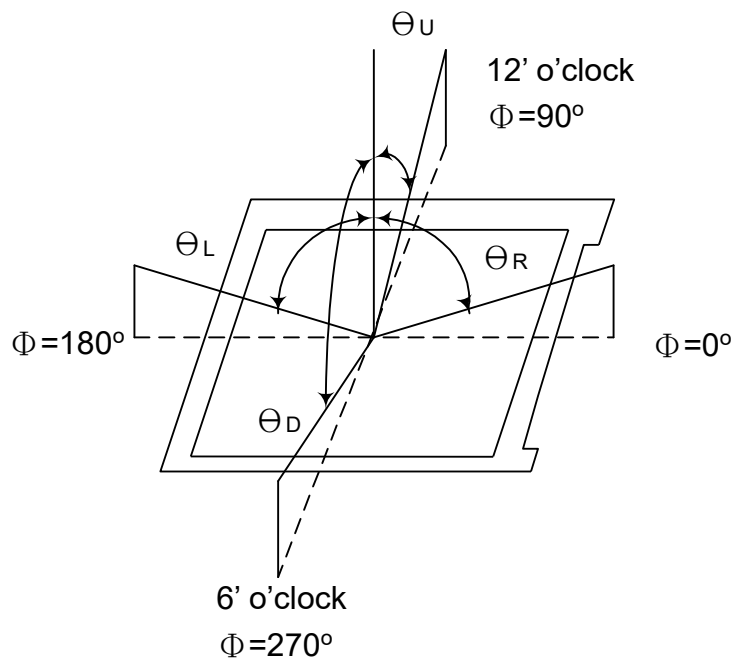
Document Title	HSD104JXN1-A21 Product Information for DATA MODUL	Page No.	7 / 28
Document No.		Revision	1.0

3.3 Measuring Equipment

- FPM520 of Westar Display technologies, INC., which utilized SR-3 for Chromaticity and BM-5A for other optical characteristics.

- Measuring spot size : 20 ~ 21 mm

Note (1) Definition of Viewing Angle:

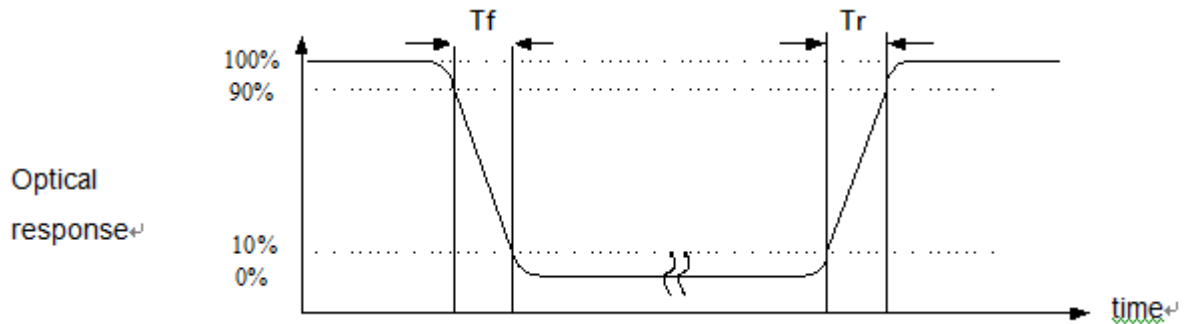


Note (2) Definition of Contrast Ratio (CR) :
measured at the center point of panel

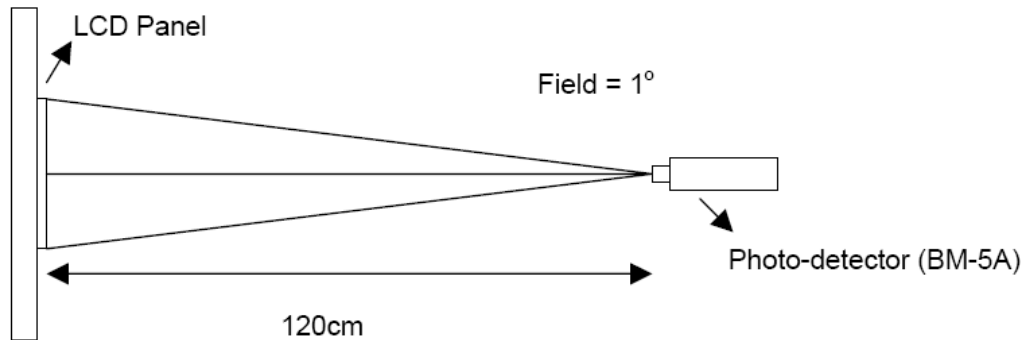
$$CR = \frac{\text{Luminance with all pixels white}}{\text{Luminance with all pixels black}}$$

Document Title	HSD104JXN1-A21 Product Information for DATA MODUL	Page No.	8 / 28
Document No.		Revision	1.0

Note (3) Definition of Response Time : Sum of T_R and T_F

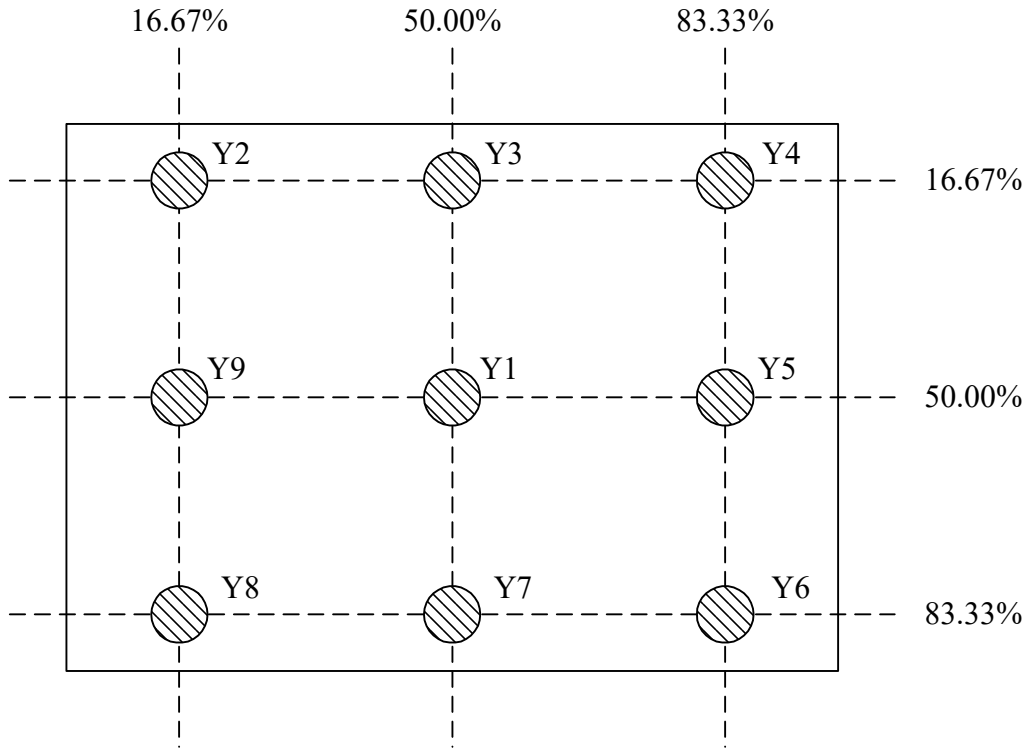


Note (4) Definition of optical measurement setup



Document Title	HSD104JXN1-A21 Product Information for DATA MODUL	Page No.	9 / 28
Document No.		Revision	1.0

Note (5) Definition of brightness uniformity



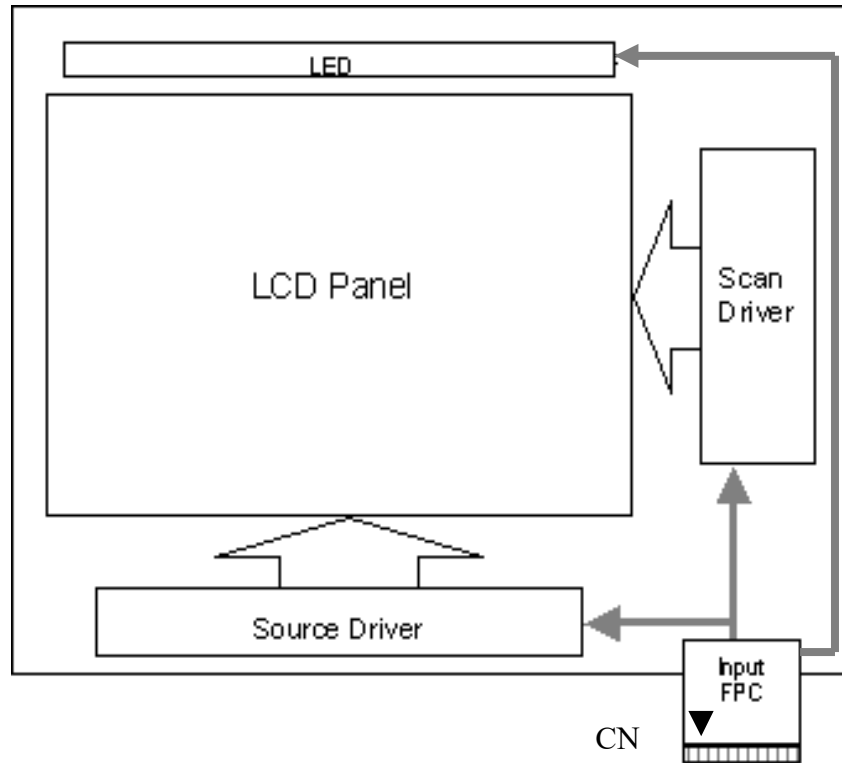
$$\text{Luminance uniformity} = \frac{\text{(Min Luminance of 9 points)}}{\text{(Max Luminance of 9 points)}} \times 100\%$$

Note (6) : Rubbing Direction (The different Rubbing Direction will cause the different optima view direction).

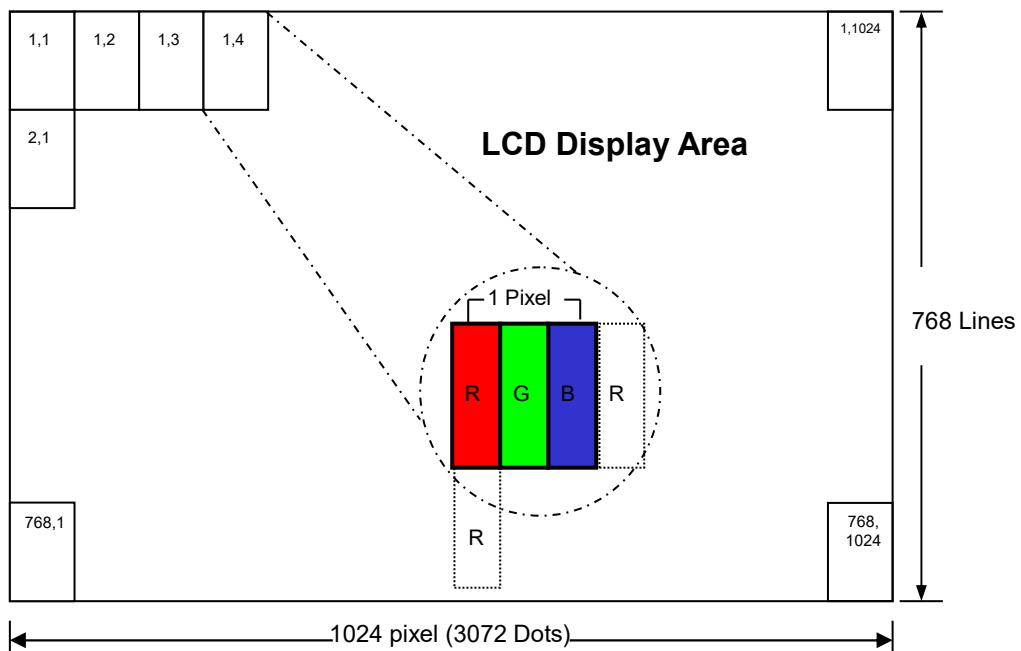
Document Title	HSD104JXN1-A21 Product Information for DATA MODUL	Page No.	10 / 28
Document No.		Revision	1.0

4.0 BLOCK DIAGRAM

4.1 TFT LCD Module:



4.2 Pixel Format



Document Title	HSD104JXN1-A21 Product Information for DATA MODUL	Page No.	11 / 28
Document No.		Revision	1.0

4.3 Relationship Between Displayed Color and Input

	Display	MSB				LSB				MSB				LSB				MSB				LSB				Gray scale Level
		R7	R6	R5	R4	R3	R2	R1	R0	G7	G6	G5	G4	G3	G2	G1	G0	B7	B6	B5	B4	B3	B2	B1	B0	
Basic color	Black	L	L	L	L	L	L	L	L	L	L	L	L	L	L	L	L	L	L	L	L	L	L	L	L	-
	Blue	L	L	L	L	L	L	L	L	L	L	L	L	L	L	L	L	H	H	H	H	H	H	H	H	-
	Green	L	L	L	L	L	L	L	L	H	H	H	H	H	H	H	H	L	L	L	L	L	L	L	L	-
	Light Blue	L	L	L	L	L	L	L	L	H	H	H	H	H	H	H	H	H	H	H	H	H	H	H	H	-
	Red	H	H	H	H	H	H	H	H	L	L	L	L	L	L	L	L	L	L	L	L	L	L	L	L	-
	Purple	H	H	H	H	H	H	H	H	L	L	L	L	L	L	L	L	H	H	H	H	H	H	H	H	-
	Yellow	H	H	H	H	H	H	H	H	H	H	H	H	H	H	H	H	L	L	L	L	L	L	L	L	-
	White	H	H	H	H	H	H	H	H	H	H	H	H	H	H	H	H	H	H	H	H	H	H	H	H	-
Gray scale of Red	Black	L	L	L	L	L	L	L	L	L	L	L	L	L	L	L	L	L	L	L	L	L	L	L	L	L0
	Dark ↑ ↓ Light	L	L	L	L	L	L	L	H	L	L	L	L	L	L	L	L	L	L	L	L	L	L	L	L	L1
		L	L	L	L	L	L	L	L	L	L	L	L	L	L	L	L	L	L	L	L	L	L	L	L	L2
		:	:	:	L3...L251																					
		H	H	H	H	H	H	L	L	L	L	L	L	L	L	L	L	L	L	L	L	L	L	L	L	L252
	H	H	H	H	H	H	L	H	L	L	L	L	L	L	L	L	L	L	L	L	L	L	L	L	L253	
	H	H	H	H	H	H	H	L	L	L	L	L	L	L	L	L	L	L	L	L	L	L	L	L	L254	
Red	H	H	H	H	H	H	H	L	L	L	L	L	L	L	L	L	L	L	L	L	L	L	L	Red L255		
Gray scale of Green	Black	L	L	L	L	L	L	L	L	L	L	L	L	L	L	L	L	L	L	L	L	L	L	L	L	L0
	Dark ↑ ↓ Light	L	L	L	L	L	L	L	L	L	L	L	L	L	L	H	L	L	L	L	L	L	L	L	L1	
		L	L	L	L	L	L	L	L	L	L	L	L	L	L	L	L	L	L	L	L	L	L	L	L2	
		:	:	:	L3...L251																					
		L	L	L	L	L	L	L	L	H	H	H	H	H	L	L	L	L	L	L	L	L	L	L	L252	
	L	L	L	L	L	L	L	L	H	H	H	H	H	L	H	L	L	L	L	L	L	L	L	L253		
	L	L	L	L	L	L	L	L	H	H	H	H	H	H	L	L	L	L	L	L	L	L	L	L254		
Green	L	L	L	L	L	L	L	H	H	H	H	H	H	H	L	L	L	L	L	L	L	L	Green L255			
Gray scale of Blue	Black	L	L	L	L	L	L	L	L	L	L	L	L	L	L	L	L	L	L	L	L	L	L	L	L	L0
	Dark ↑ ↓ Light	L	L	L	L	L	L	L	L	L	L	L	L	L	L	L	L	L	L	L	L	L	L	H	L1	
		L	L	L	L	L	L	L	L	L	L	L	L	L	L	L	L	L	L	L	L	L	H	L	L2	
		:	:	:	L3...L251																					
		L	L	L	L	L	L	L	L	L	L	L	L	L	L	L	H	H	H	H	H	L	L	L	L252	
	L	L	L	L	L	L	L	L	L	L	L	L	L	L	L	H	H	H	H	H	L	H	L	L253		
	L	L	L	L	L	L	L	L	L	L	L	L	L	L	L	H	H	H	H	H	H	L	L	L254		
Blue	L	L	L	L	L	L	L	L	L	L	L	L	L	L	H	H	H	H	H	H	H	H	Blue L255			
Gray scale of White & Black	Black	L	L	L	L	L	L	L	L	L	L	L	L	L	L	L	L	L	L	L	L	L	L	L	L	L0
	Dark ↑ ↓ Light	L	L	L	L	L	L	L	H	L	L	L	L	L	L	H	L	L	L	L	L	L	L	H	L1	
		L	L	L	L	L	L	H	L	L	L	L	L	L	H	L	L	L	L	L	L	H	L	L	L2	
		:	:	:	L3...L251																					
		H	H	H	H	H	L	L	H	H	H	H	L	L	H	H	H	H	L	L	L	L	L	L	L252	
	H	H	H	H	H	L	H	H	H	H	H	L	H	H	H	H	H	L	H	L	L	L	L	L253		
	H	H	H	H	H	H	L	H	H	H	H	H	L	H	H	H	H	H	L	L	L	L	L	L254		
White	H	H	H	H	H	H	H	H	H	H	H	H	H	H	H	H	H	H	H	H	H	H	White L255			

Document Title	HSD104JXN1-A21 Product Information for DATA MODUL	Page No.	12 / 28
Document No.		Revision	1.0

5.0 INTERFACE PIN CONNECTION

5.1 FPC Pin Assignment:

FPC connector is used for electronics interface. The recommended model is CN1 (Input signal): 089K60-000100-G2-R (STARCONN)

Pin NO.	Symbol	Description	Note
1	AGND	Analog ground	
2	AVDD	Analog power	
3	DVDD	Digital power	
4	GND	Digital ground	
5	VCOM	Not connect	
6	DVDD	Digital power	
7	GND	Digital ground	
8	V14	Not connect	
9	V13	Not connect	
10	V12	Not connect	
11	V11	Not connect	
12	V10	Not connect	
13	V9	Not connect	
14	V8	Not connect	
15	GND	Digital ground	
16	DVDD_LVDS	LVDS power	
17	GND	Digital ground	
18	PIND3	Positive LVDS differential data input	
19	NIND3	Negative LVDS differential data input	
20	GND	Digital ground	
21	PINC	Positive LVDS differential clock input	
22	NINC	Negative LVDS differential clock input	
23	GND	Digital ground	
24	PIND2	Positive LVDS differential data input	
25	NIND2	Negative LVDS differential data input	
26	GND	Digital ground	
27	PIND1	Positive LVDS differential data input	
28	NIND1	Negative LVDS differential data input	
29	GND	Digital ground	
30	PIND0	Positive LVDS differential data input	

Document Title	HSD104JXN1-A21 Product Information for DATA MODUL	Page No.	13 / 28
Document No.		Revision	1.0

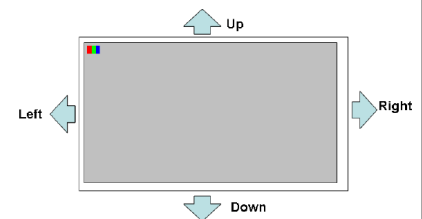
Pin NO.	Symbol	Description	Note
31	NIND0	Negative LVDS differential data input	
32	GND	Digital ground	
33	GND_LVDS	LVDS ground	
34	GRB	Global reset pin. Active low to enter reset state. Suggest to connecting with an RC reset circuit for stability. Normally pull high. (R=10KΩ,C=0.1uF)	
35	STBYB	Standby mode, normally pull high STBYB= 1, normal operation STBYB=0 ,timing control, source driver will turn off, all output are high-Z	
36	SHLR	Left or right display control	Note 1
37	DVDD	Digital power	
38	UPDN	Up / down display control	Note 1
39	AGND	Analog ground	
40	AVDD	Analog power	
41	VCOM	Not connect	
42	DITH	Dithering function enable control. Normally pull low DITHER= "1",Enable internal dithering function DITHER= "0",Disable internal dithering function	
43	GND	Digital ground	
44	DVDD	Digital Power	
45	GND	Digital ground	
46	V7	Not connect	
47	V6	Not connect	
48	V5	Not connect	
49	V4	Not connect	
50	V3	Not connect	
51	V2	Not connect	
52	V1	Not connect	
53	GND	Digital ground	
54	DVDD	Digital power	
55	SELB	6bit/8bit mode select, SELB = "0", LVDS input data is 8bits SELB = "1": LVDS input data is 6bits	Note 2

Document Title	HSD104JXN1-A21 Product Information for DATA MODUL	Page No.	14 / 28
Document No.		Revision	1.0

Pin NO.	Symbol	Description	Note
56	VGH	Positive power for TFT	
57	DVDD	Digital power for Gate IC	
58	VGL	Negative power for TFT	
59	GND	Digital ground for Gate IC	
60	NC	Not connect	

Note 1 : UPDN and SHLR control function

UPDN	SHLR	Data shifting
0	1	Normally display
0	0	Inverse Left and Right
1	1	Inverse Up and Down
1	0	Inverse Left and Right Inverse Up and Down



**Note 2 : If LVDS input data is 6 bits, SELB must be set to High
If LVDS input data is 8 bits, SELB must be set to Low
DITH and SELB control function**

DITH	SELB	Data shifting
0	1	Colors (262K)
0	0	Colors (262K)
1	1	Colors (262K)
1	0	Colors (16.2M)

5.2 LED Pin Assignment:

PIN	Symbol	Description
1	V _L	LED Light-bar Input Power
2	V _L	LED Light-bar Input Power
3	V _L	LED Light-bar Input Power
4	NC	No connection
5	NC	No connection
6	NC	No connection
7	CH1	Light-bar Feedback Channel 1
8	CH2	Light-bar Feedback Channel 2
9	CH3	Light-bar Feedback Channel 3
10	CH4	Light-bar Feedback Channel 4

Document Title	HSD104JXN1-A21 Product Information for DATA MODUL	Page No.	15 / 28
Document No.		Revision	1.0

6.0 ELECTRICAL CHARACTERISTICS

6.1 TFT LCD Module

Item	Symbol	Min.	Typ.	Max.	Unit	Note
Supply Voltage	V_{DVDD}	3	3.3	3.6	V	
	V_{DVDD_LVDS}					
	VGH	24.7	25	25.3	V	Note (1)
	VGL	-10.3	-10	-9.7	V	Note (2)
	AVDD	11.8	12.1	12.4	V	
	VCOM	5.18	5.48	5.78	V	Note (3)
Input signal voltage	V_{IH}	0.8 VDD		VDD	V	
	V_{IL}	0		0.2VDD	V	
Current of power supply	IDD	20	25	35	mA	VDD =3.3V/ Note (4)
	Iavdd	55	66	80	mA	AVDD=12.1V/ Note (4)
	Ivgh	0.4	0.71	1.2	mA	VGH=25V/ Note (4)
	Ivgl	1	1.5	2	mA	VGL=-10V/ Note (4)
	Ivcom	0.5	0.9	1.5	mA	VCOM=5.275V/ Note (4)

Note :

- (1) : VGH is TFT Gate operating Voltage.
- (2) : VGL is TFT Gate operating Voltage.
- (3) : VCOM must be adjusted to optimize display quality _ Flicker Pattern ◦
- (4) : @ White Pattern & 60Hz ◦

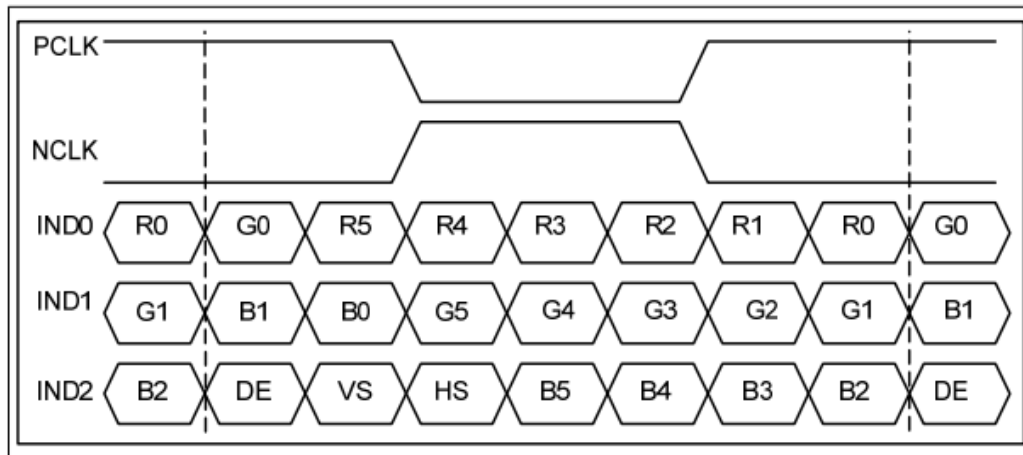
6.2 Switching Characteristics for LVDS Receiver

Item	Symbol	Min.	Typ.	Max.	Unit	Conditions
Differential Input High Threshold	V_{th}			100	mV	$V_{CM}=1.2V$
Differential Input Low Threshold	V_{tl}	-100			mV	
Input Current	I_{IN}	-10		10	uA	
Differential input Voltage	$ V_{ID} $	0.1		0.6	V	
Common Mode Voltage Offset	V_{CM}	0.7	1.2	1.6	V	

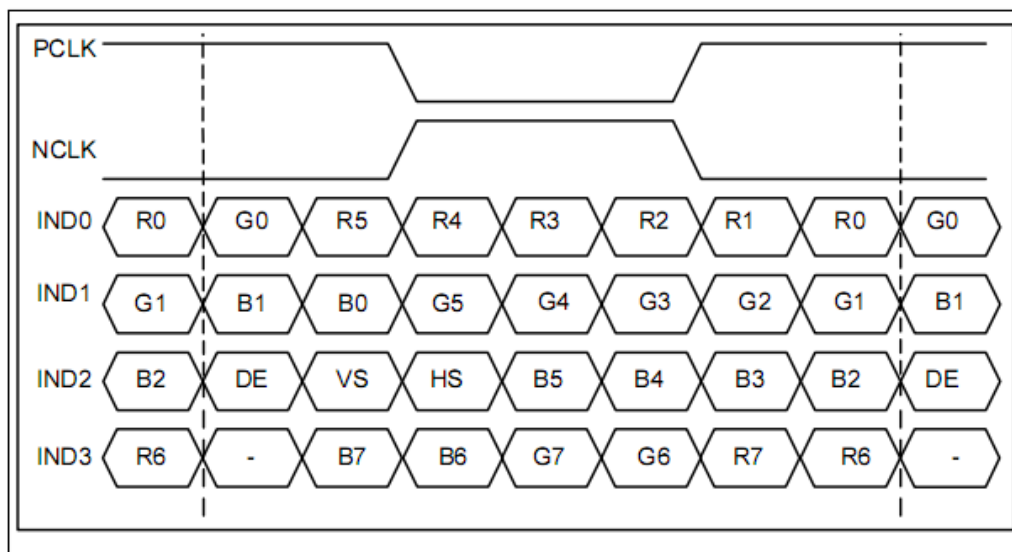
Document Title	HSD104JXN1-A21 Product Information for DATA MODUL	Page No.	16 / 28
Document No.		Revision	1.0

6.3 Bit LVDS input

6.3.1 6bit LVDS input



6.3.2 8Bit LVDS input



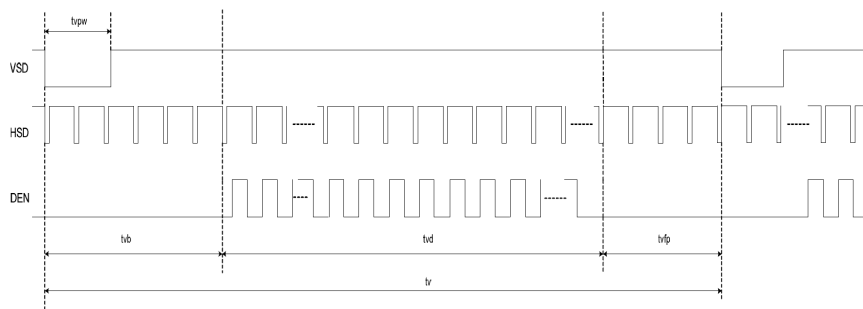
Document Title	HSD104JXN1-A21 Product Information for DATA MODUL	Page No.	17 / 28
Document No.		Revision	1.0

6.4 Interface Timing (DE mode)

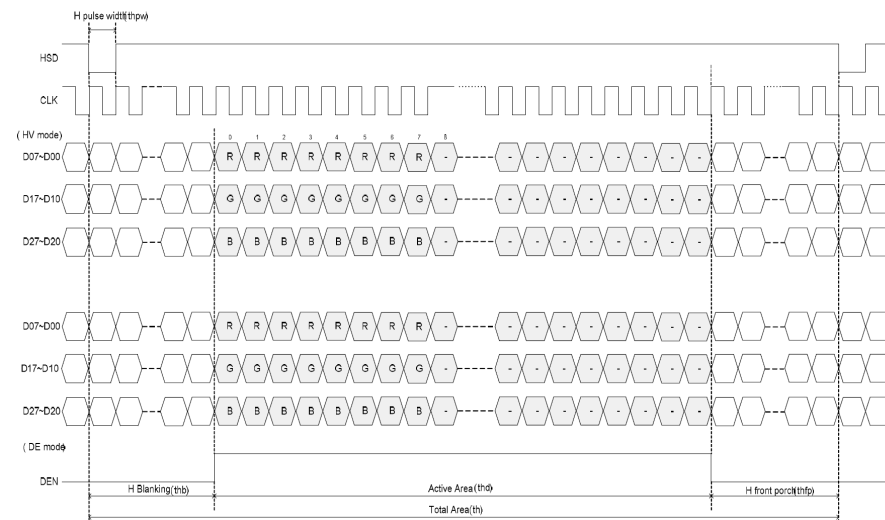
DE mode					
Parameter	Symbol	Value			Unit
		Min.	Typ.	Max.	
DCLK frequency @Frame rate=60hz	fclk	52	65	71	Mhz
Horizontal display area	thd	1024			DCLK
HSYNC period time	th	1114	1344	1400	DCLK
HSYNC blanking	thb+thfp	90	320	376	DCLK
Vertical display area	tvd	768			H
VSYNC period time	tv	778	806	845	H
VSYNC blanking	tvb+tvfp	10	38	77	H

Timing Diagram of Interface Signal (DE mode)

(1). Vertical input timing

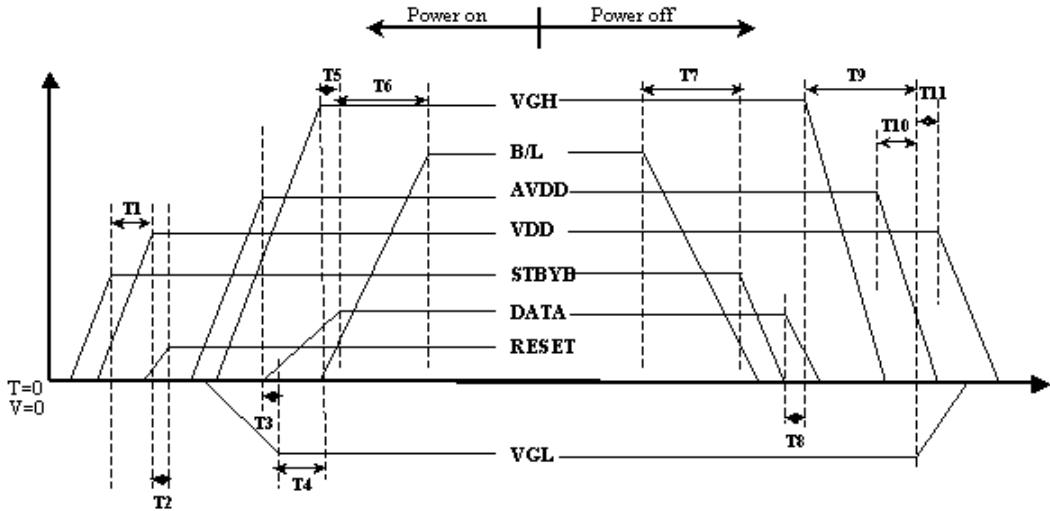


(2). Horizontal input timing



Document Title	HSD104JXN1-A21 Product Information for DATA MODUL	Page No.	18 / 28
Document No.		Revision	1.0

6.5 Power On / Off Sequence



Item	Min.	Typ.	Max.	Unit
T1	0	--	--	ms
T2	50	--	--	ms
T3	5	--	--	ms
T4	10	--	--	ms
T5	20	--	--	ms
T6	50	--	--	ms
T7	20	--	--	ms
T8	10	--	--	ms
T9	20	--	--	ms
T10	10	--	--	ms
T11	20	--	--	ms

Document Title	HSD104JXN1-A21 Product Information for DATA MODUL	Page No.	19 / 28
Document No.		Revision	1.0

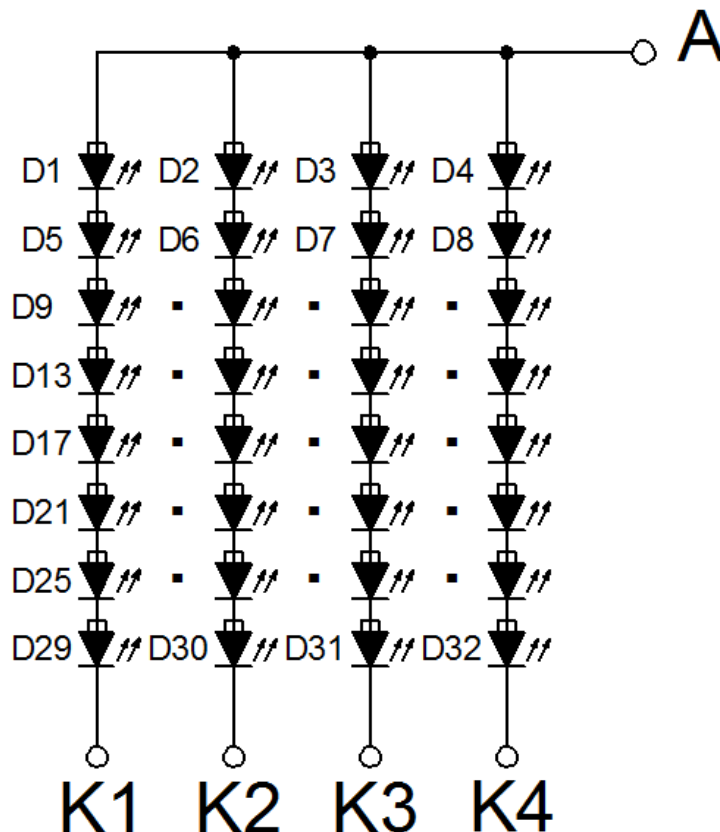
6.6 Backlight Unit

Parameter	Symbol	Min	Typ	Max	Units	Condition
LED Current	I_L	--	240	--	mA	$T_a=25^\circ\text{C}$
LED Voltage	V_L	--	22.4	25.6	Volt	$T_a=25^\circ\text{C}$
LED Life-Time	N/A	30,000	--	--	Hour	$T_a=25^\circ\text{C}$ $I_F=60\text{mA}$ Note (2)

Note (1) LED life time (Hr) can be defined as the time in which it continues to operate under the condition: $T_a=25\pm 3^\circ\text{C}$, typical I_L value indicated in the above table until the brightness becomes less than 50%.

Note (2) The "LED life time" is defined as the module brightness decrease to 50% original brightness at $T_a=25^\circ\text{C}$ and $I_L=240\text{mA}$. The LED lifetime could be decreased if operating I_L is larger than 240mA. The constant current driving method is suggested.

Note (3) LED Light Bar Circuit



Document Title	HSD104JXN1-A21 Product Information for DATA MODUL	Page No.	20 / 28
Document No.		Revision	1.0

7.0 Reliability test items

No.	Item	Conditions	Remark
1	High Temperature Storage	Ta=+85°C, 240hrs	1,2,3
2	Low Temperature Storage	Ta=-30°C, 240hrs	1,2,3
3	High Temperature Operation	Ta=+85°C, 240hrs	1,2,3
4	Low Temperature Operation	Ta=-30°C, 240hrs	1,2,3
5	High Temperature and High Humidity (operation)	Ta=+60°C, 90%RH, 240hrs	1,2,3
6	Thermal Cycling Test (non operation)	-30°C(30min) → +80°C(30min), 200 cycles	1,2,3
7	Electrostatic Discharge	±200V,200pF(0Ω) 1 time/connector	
8	Vibration	1.Random: 1.04G, 5~500Hz, XYZ, 30min/each direction 2.Sine: Freq. 8~33.3Hz, Stoke: 1.3mm Sweep: 2.9G, 33.3~400Hz X/Z: 2hrs, Y: 4hrs	
9	Shock	Half-Sine, 100G, 6ms, ±XYZ, 3time	
10	Vibration (with carton)	Random: 0.015G ² /Hz, 5~200Hz -6dB/Octave, 200~400Hz XYZ 各方向 2hrs	
11	Drop (with carton)	Drop height condition, basis on the product weight and follow QB100-0027 1 corner, 3 edges, 6 surfaces	

Note1: There is no display function NG issue occurred, all the cosmetic specification is judged before the reliability stress.

Note2: The test result shall be evaluated after the sample has been left at room temperature and humidity for 2 hours without load. No condensation shall be accepted. The sample shall be free from defects:

(Air bubble in the LCD 、 Seal leak 、 Non-display 、 Missing segments 、 Glass crack).

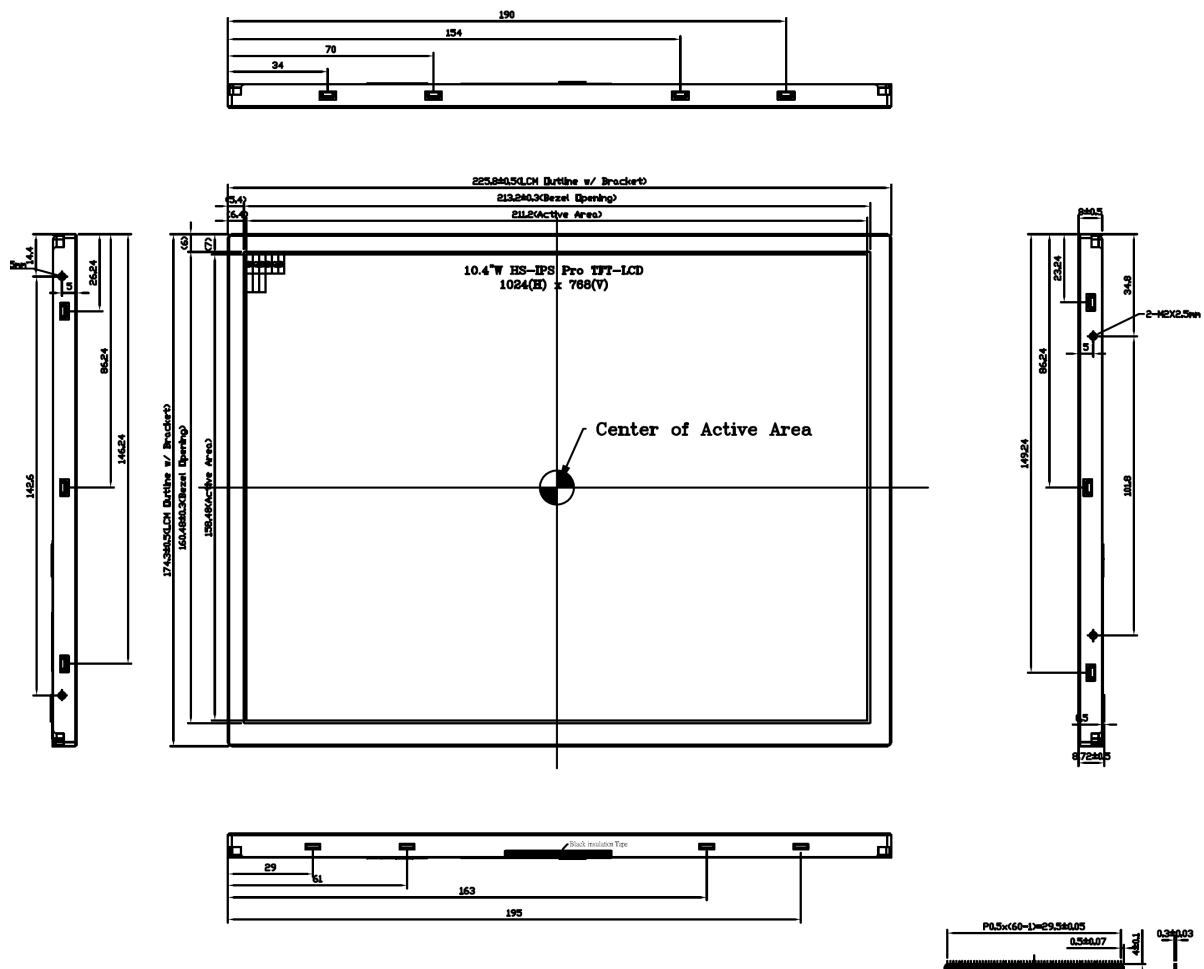
Note3: The test condition definition panel's surface temperature.

Document Title	HSD104JXN1-A21 Product Information for DATA MODUL	Page No.	21 / 28
Document No.		Revision	1.0

8.0 OUTLINE DIMENSION

Unit : mm

8.1 Front View:

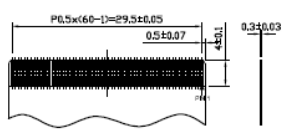
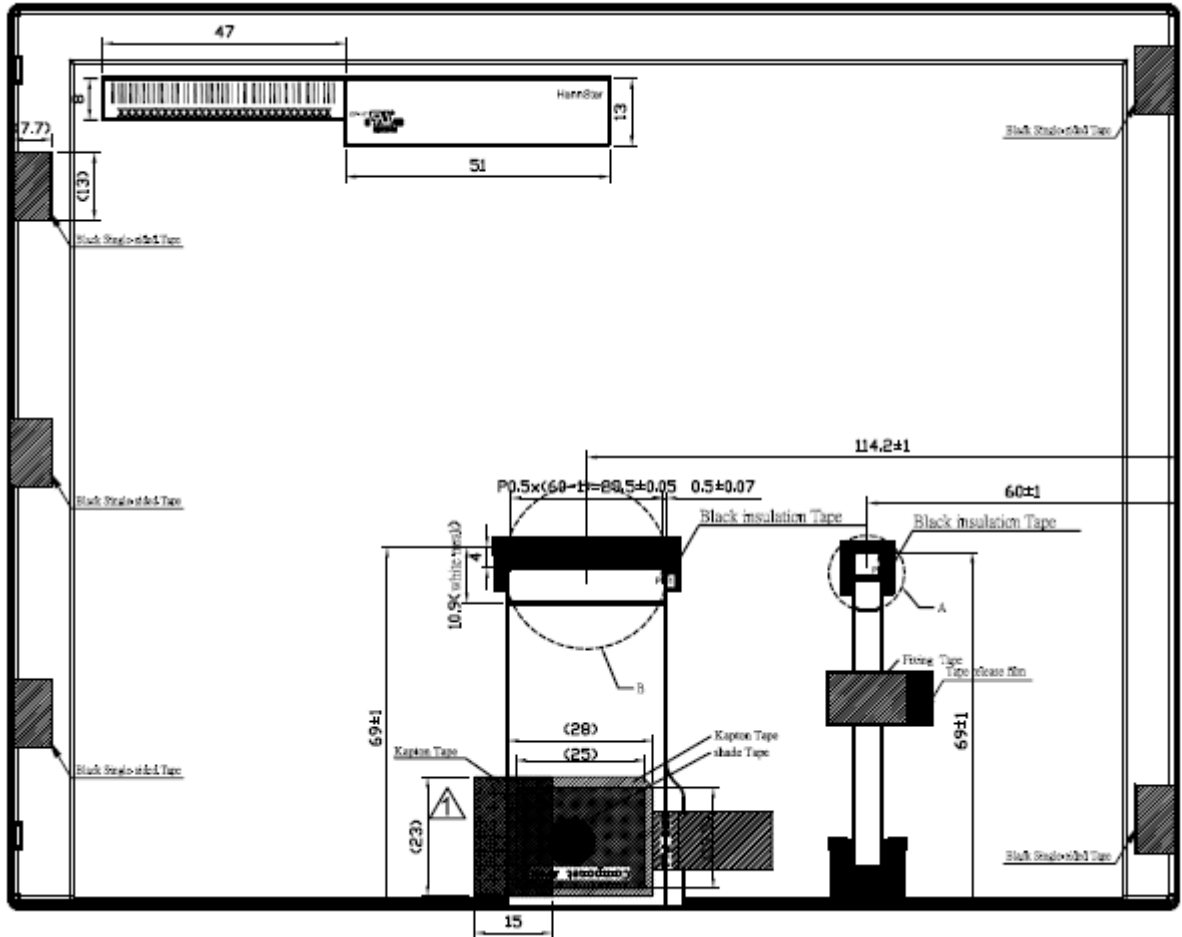


General tolerance: +/- 0.3mm

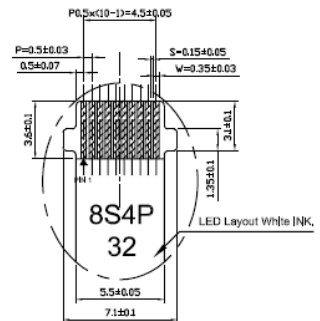
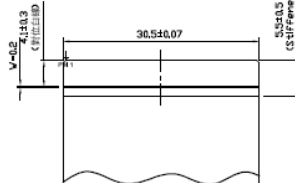


Document Title	HSD104JXN1-A21 Product Information for DATA MODUL	Page No.	22 / 28
Document No.		Revision	1.0

8.2 Rear View:



DETAIL B
SCALE 2:1



DETAIL A
SCALE 2:1

General tolerance: +/-0.3mm

Document Title	HSD104JXN1-A21 Product Information for DATA MODUL	Page No.	23 / 28
Document No.		Revision	1.0

9.0 LOT MARK

9.1 Lot Mark

1	2	3	4	5	6	7	8	9	10	11	12	13	14	15
---	---	---	---	---	---	---	---	---	----	----	----	----	----	----

Code 1,2,3,4,5,6: HannStar internal flow control code.

Code 7: production location.

Code 8: production year.

Code 9: production month.

Code 10,11,12,13,14,15: serial number.

Note (1) Production Year: Code 8 is defined by the last number of the year, for example

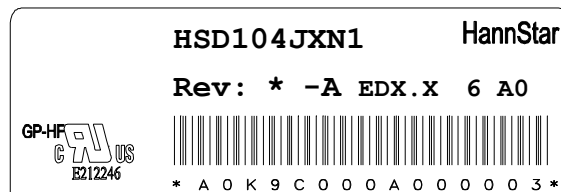
Year	2016	2017	2018	2019	2020	2021	2022	2023	2024	2025
Mark	6	7	8	9	0	1	2	3	4	5

Note (2) Production Month

Month	Jan.	Feb.	Mar.	Apr.	May.	Jun.	Jul.	Aug.	Sep.	Oct	Nov.	Dec.
Mark	1	2	3	4	5	6	7	8	9	A	B	C

9.2 Detail of Lot Mark

- (1) Below label is attached on the backside of the LCD module. See Section 8.0: Outline Dimension.
- (2) The detail of Lot Mark is attached as below.
- (3) This is subject to change without prior notice.



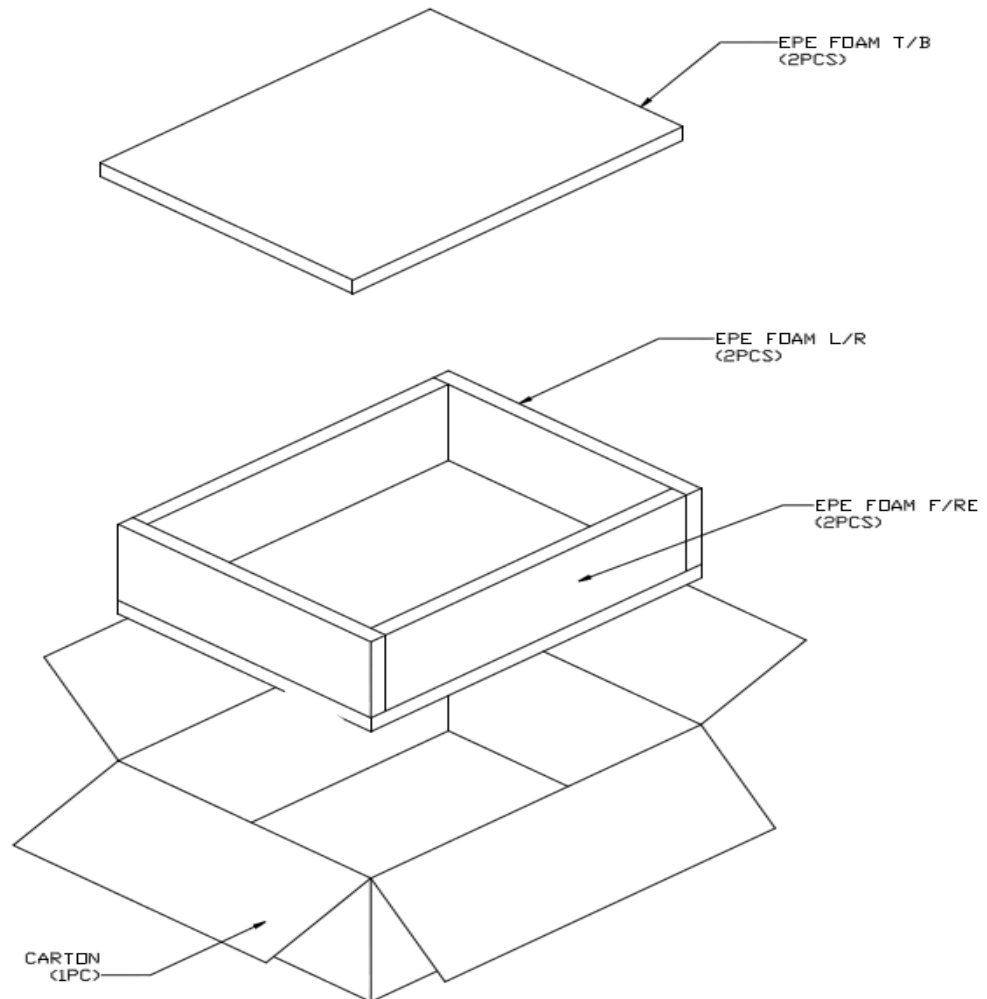
Document Title	HSD104JXN1-A21 Product Information for DATA MODUL	Page No.	24 / 28
Document No.		Revision	1.0

10.0 PACKAGE SPECIFICATION

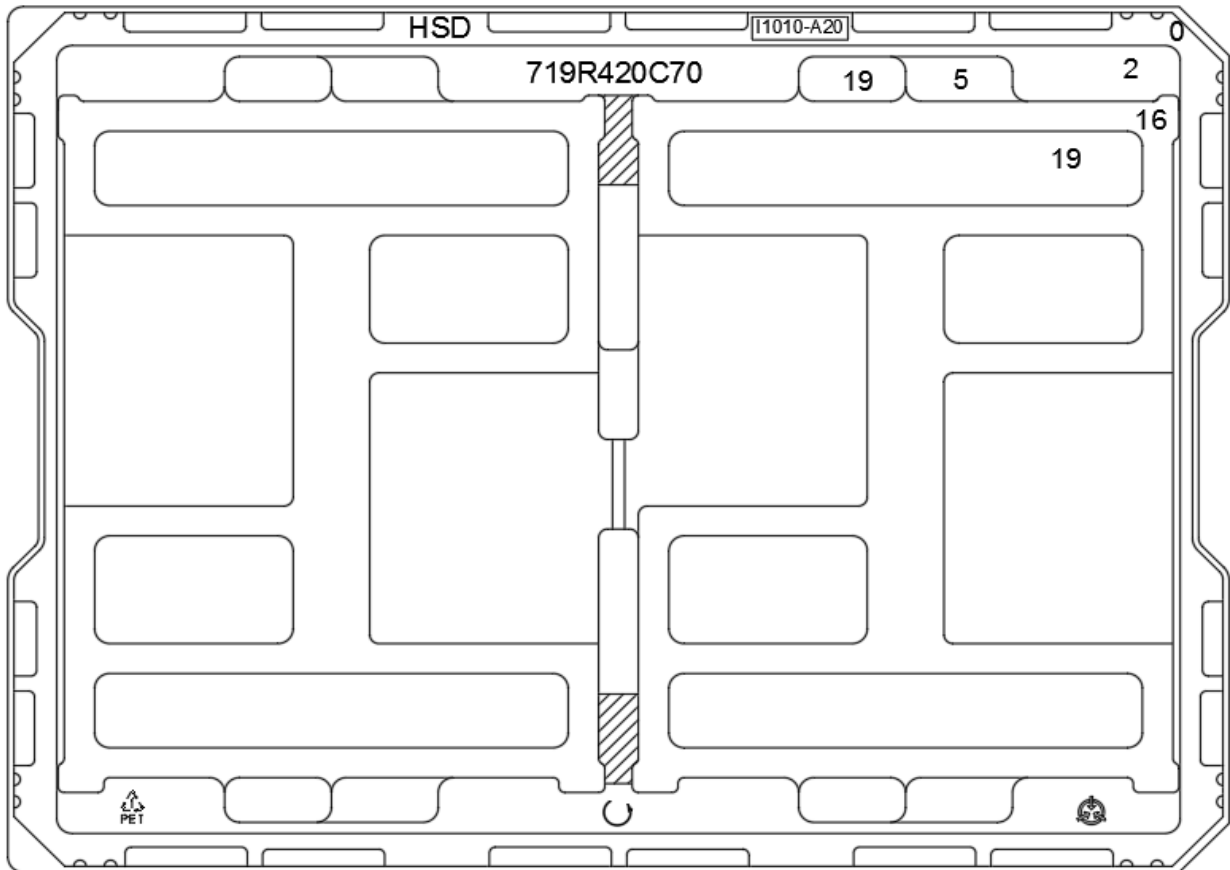
10.1 Packing form

LCM Model	Qty. in the Box	Inner Box Size(mm)	Notice
HSD104JXN1-A21	1 pcs/Box	Ref.452 x 346 x 175 ^H	--
	7 pcs/Tray	Ref.400 x 290 x 22.7 ^H	
	10 pcs/EPE	Ref. 171 x 222 x 1 ^H	
	1 pcs/ bag	Ref. 555x 550 x 0.14 ^t	

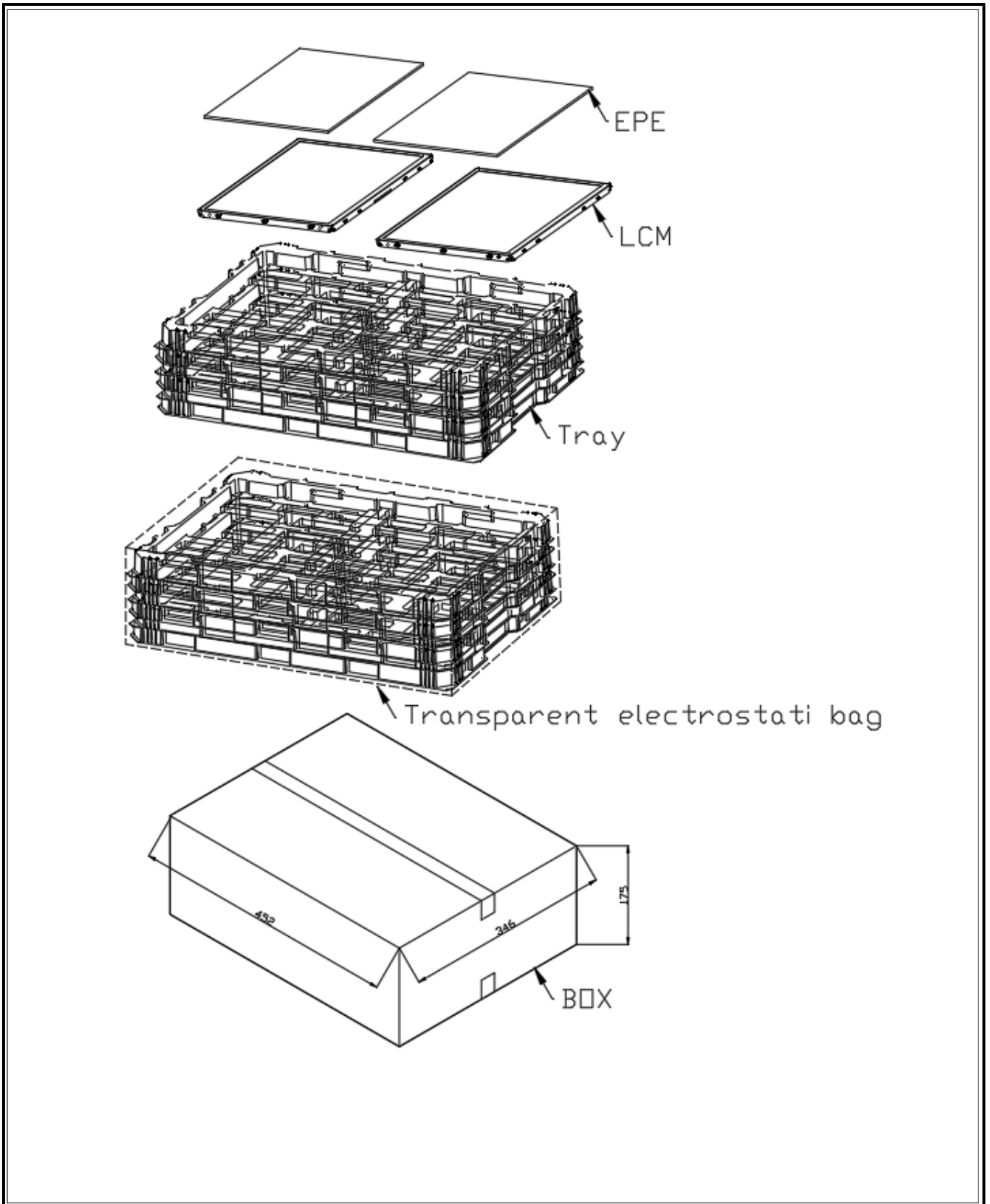
10.2 Packing assembly drawings



Document Title	HSD104JXN1-A21 Product Information for DATA MODUL	Page No.	25 / 28
Document No.		Revision	1.0



Document Title	HSD104JXN1-A21 Product Information for DATA MODUL	Page No.	26 / 28
Document No.		Revision	1.0



Document Title	HSD104JXN1-A21 Product Information for DATA MODUL	Page No.	27 / 28
Document No.		Revision	1.0

11.0 GENERAL PRECAUTION

11.1 Use Restriction

This product is not authorized for use in life supporting systems, aircraft navigation control systems, military systems and any other application where performance failure could be life-threatening or otherwise catastrophic.

11.2 Disassembling or Modification

Do not disassemble or modify the module. It may damage sensitive parts inside LCD module, and may cause scratches or dust on the display. HannStar does not warrant the module, if customers disassemble or modify the module.

11.3 Breakage of LCD Panel

11.3.1. If LCD panel is broken and liquid crystal spills out, do not ingest or inhale liquid crystal, and do not contact liquid crystal with skin.

11.3.2. If liquid crystal contacts mouth or eyes, rinse out with water immediately.

11.3.3. If liquid crystal contacts skin or cloths, wash it off immediately with alcohol and rinse thoroughly with water.

11.3.4. Handle carefully with chips of glass that may cause injury, when the glass is broken.

11.4 Electric Shock

11.4.1. Disconnect power supply before handling LCD module.

11.4.2. Do not pull or fold the LED cable.

11.4.3. Do not touch the parts inside LCD modules and the fluorescent LED's connector or cables in order to prevent electric shock.

11.5 Absolute Maximum Ratings and Power Protection Circuit

11.5.1. Do not exceed the absolute maximum rating values, such as the supply voltage variation, input voltage variation, variation in parts' parameters, environmental temperature, etc., otherwise LCD module may be damaged.

11.5.2. Please do not leave LCD module in the environment of high humidity and high temperature for a long time.

11.5.3. It's recommended to employ protection circuit for power supply.

11.6 Operation

11.6.1 Do not touch, push or rub the polarizer with anything harder than HB pencil lead.

11.6.2 Use fingerstalls of soft gloves in order to keep clean display quality, when persons handle the LCD module for incoming inspection or assembly.

11.6.3 When the surface is dusty, please wipe gently with absorbent cotton or other soft material.

Document Title	HSD104JXN1-A21 Product Information for DATA MODUL	Page No.	28 / 28
Document No.		Revision	1.0

11.6.4 Wipe off saliva or water drops as soon as possible. If saliva or water drops contact with polarizer for a long time, they may causes deformation or color fading.

11.6.5 When cleaning the adhesives, please use absorbent cotton wetted with a little petroleum benzine or other adequate solvent.

11.7 Mechanism

Please mount LCD module by using mounting holes arranged in four corners tightly.

11.8 Static Electricity

11.8.1 Protection film must remove very slowly from the surface of LCD module to prevent from electrostatic occurrence.

11.8.2 Because LCD module use CMOS-IC on circuit board and TFT-LCD panel, it is very weak to electrostatic discharge. Please be careful with electrostatic discharge. Persons who handle the module should be grounded through adequate methods.

11.9 Strong Light Exposure

The module shall not be exposed under strong light such as direct sunlight. Otherwise, display characteristics may be changed.

11.10 Disposal

When disposing LCD module, obey the local environmental regulations.



ALL TECHNOLOGIES. ALL COMPETENCIES. ONE SPECIALIST.



DATA MODUL AG
Landsberger Straße 322
DE-80687 Munich
Phone: +49-89-56017-0

DATA MODUL WEIKERSHEIM GMBH
Lindenstraße 8
DE-97990 Weikersheim
Phone: +49-7934-101-0



More information and worldwide locations can be found at

www.data-modul.com