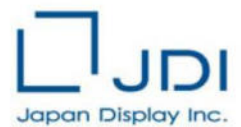




SPECIFICATION



LPM012M387D

1,19" MIP 240x240 round

Version:

Date: 08.10.2020

Note: This specification is subject to change without prior notice

To : _____

Date : May 15, 2020

Document No. JDG010001086-01

| | |
|-----------------------|--------------------|
| SPECIFICATIONS | |
| Product Name | LPM012M387D |

Approval Signature

Accepted by : _____

Date : _____

Japan Display Inc.

Proposed by : S. Hashimoto

| | | | | |
|-------------------------|-------------------|--|--------------|--|
| Revision History | Issued No. | | JDG010001086 | |
| | Revision | | 01 | |
| | Product Name | | LPM012M387D | |
| | Customer Part No. | | | |

| Date/Rev. | Contents of change | | | Reasons | Remarks |
|------------------------|--------------------|---|-------------|---------|----------------------------|
| May 15, 2020 Rev.01 | - | - | New Release | - | LPM012M387D (200119702) |
| | | | | | |
| | | | | | |
| | | | | | |
| | | | | | |
| | | | | | |
| | | | | | |
| | | | | | |
| | | | | | |
| | | | | | |
| | | | | | |
| | | | | | |
| | | | | | |
| | | | | | |
| | | | | | |
| | | | | | |
| | | | | | |
| | | | | | |
| | | | | | |
| | | | | | |
| | | | | | |
| | | | | | |
| | | | | | |
| | | | | | |
| | | | | | |
| | | | | | |
| | | | | | |
| | | | | | |
| | | | | | |
| | | | | | |
| | | | | | |
| | | | | | |
| | | | | | |
| | | | | | |
| | | | | | |
| | | | | | |

(C): Changed (A): Appended (D): Deleted (F): Filled in

CONTENTS

| | |
|--|-----------|
| 1. BASIC SPECIFICATIONS | 1 |
| 1.1 STRUCTURES | 1 |
| 1.2 BLOCK DIAGRAM | 2 |
| 1.3 INPUT / OUTPUT TERMINAL NAME AND FUNCTIONS..... | 3 |
| 2. ABSOLUTE MAXIMUM RATINGS | 4 |
| 3. ELECTRICAL CHARACTERISTICS | 5 |
| 3.1 POWER SUPPLY VOLTAGE..... | 5 |
| 3.2 INPUT SIGNAL VOLTAGE | 5 |
| 3.3 INPUT TERMINAL CAPACITANCE..... | 5 |
| 3.4 POWER CONSUMPTION | 6 |
| 3.5 AC CHARACTERISTICS | 7 |
| 3.6 TIMING DIAGRAM (UPDATE MODE) | 8 |
| 3.7 TIMING DIAGRAM (PARTIAL-UPDATE MODE) | 9 |
| 3.8 RECOMMENDED SEQUENCE | 10 |
| 4. PIXEL LAYOUT | 11 |
| 4.1 PIXEL CONFIGURATION..... | 11 |
| 4.2 PIXEL ADDRESS MAP | 12 |
| 5. OPTICAL SPECIFICATION | 16 |
| 5.1 OPTICAL CHARACTERISTICS..... | 16 |
| 5.2 DEFINITION AND CONDITION OF OPTICAL CHARACTERISTICS..... | 17 |
| 6. INSPECTION | 19 |
| 6.1 QUALITY STANDARD..... | 19 |
| 6.2 DISPLAY APPEARANCE STANDARDS..... | 21 |
| 6.3 EXTERNAL APPEARANCE STANDARDS..... | 22 |
| 7. RELIABILITY SPECIFICATION | 22 |
| 7.1 CONDITIONS OF RELIABILITY AND MECHANICAL TEST | 23 |
| 8.1 LOT MARK..... | 24 |
| 9. PACKING SPECIFICATIONS | 25 |
| 9.1 INNER CARTON..... | 25 |
| 9.2 MASTER CARTON..... | 26 |
| 10. LCD MODULE USAGE AND PRECAUTIONS | 27 |
| 10.1 HANDLING | 27 |
| 10.2 DESIGN OF APPLICATION..... | 28 |
| 10.3 DISPLAY CHARACTERISTICS | 28 |
| 10.4 KEEPING THE PRODUCTS | 29 |
| 10.5 DISPOSAL..... | 29 |
| 10.6 OTHERS..... | 29 |
| ·OUTLINE DRAWING | 31 |

1. BASIC SPECIFICATIONS

LPM012M387D is a 1.19 inch reflective active matrix liquid crystal display (LCD) module, therefore, the specification is defined in reflective mode only unless otherwise specified in this specification sheet. The Active area of the LCD module is round in shape and it has 240(H) x 240(V) pixels. A pixel has 2-bit static random-access memory (SRAM) to store the image data for each sub-pixel and it is capable of displaying 64 colors.

1.1 STRUCTURES

| No. | FACTOR | SPECIFICATIONS | UNIT |
|-----|-----------------------------------|--|------|
| 1 | LCD structure | LTPS (Memory in Pixel type) | - |
| 2 | Outward (*1-1) | 33.04(W) x 33.94(H) x 0.871(D) (*1-1) | mm |
| 3 | Weight | Approx. 1.7 | g |
| 4 | Screen size | 30.24 (1.19inch) diameter | mm |
| 5 | Resolution | 240(H) x 240(V) | dot |
| 6 | Interface | Direct I/F | - |
| 7 | Dot pitch (Horizontal x Vertical) | 0.042(H) x 0.126(V) | mm |
| 8 | Dot layout | RGB stripe | - |
| 9 | Number of colors | 64 colors | - |
| 10 | Liquid crystal mode | ECB normally black (Reflective type) | - |
| 11 | Front Polarizer | Hard Coat type (*Pencil Hardness : 2H) | - |
| 12 | Rear Polarizer | With APCF | - |

Note)

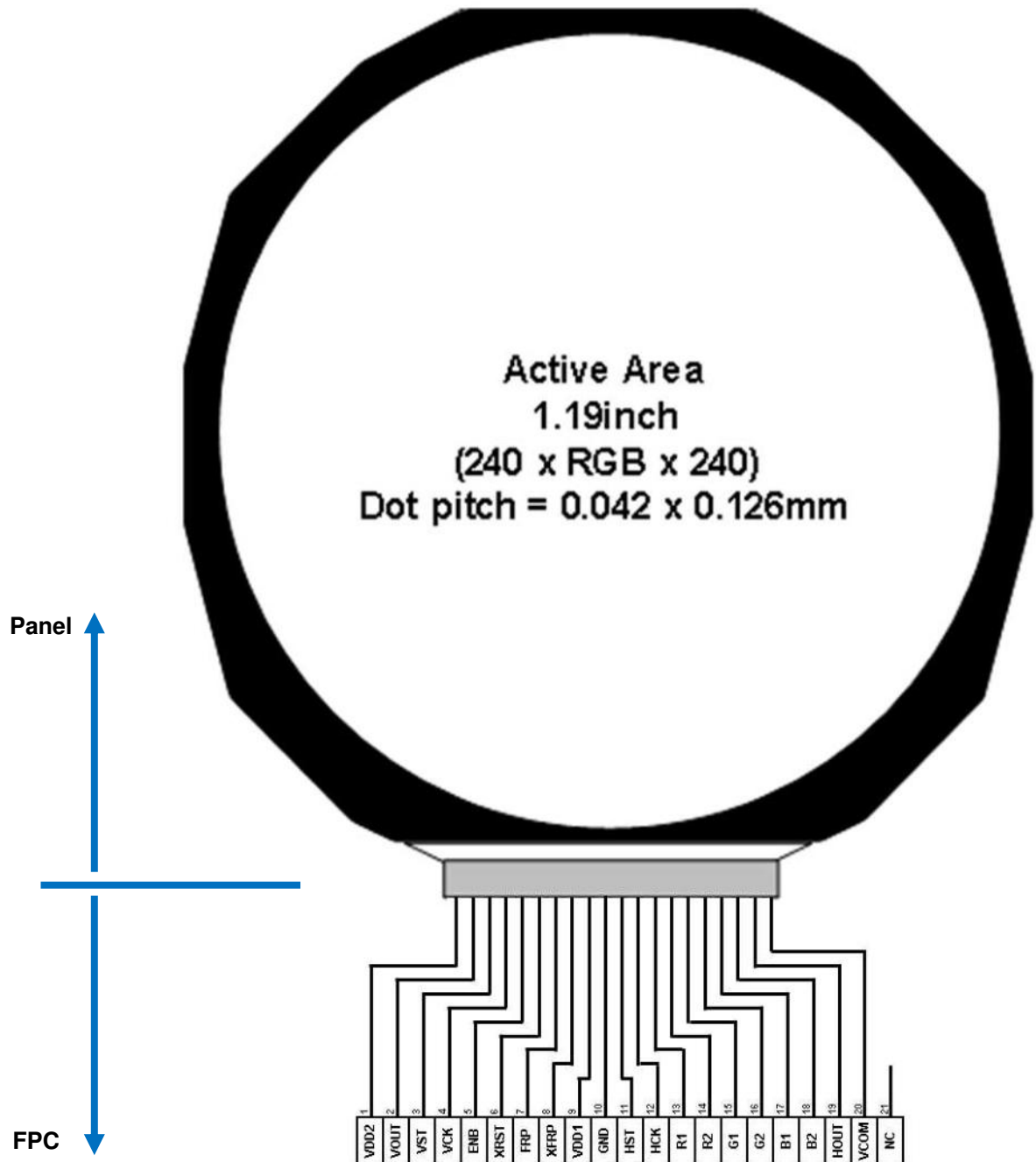
(*1-1) Excluding FPC and part of protruding. See attached drawing for details.

1.2 BLOCK DIAGRAM

The block diagram of a panel is shown below.

1.2.1 Pin layout and Internal circuit

Viewing in front of a LCD panel



1.3 INPUT / OUTPUT TERMINAL NAME AND FUNCTIONS

P: Power supply I: Input O: Output NC: Not connected

| PIN | SYMBOL | TYPE | DESCRIPTION | REMARK |
|-----|--------|------|---|--------|
| 1 | VDD2 | P | Power supply for the vertical driver and pixel memory | |
| 2 | VOUT | O | Output from the end of the vertical shift register | (*1-3) |
| 3 | VST | I | Start signal for the vertical driver | |
| 4 | VCK | I | Shift clock for the vertical driver | |
| 5 | ENB | I | Write enable signal for the pixel memory | |
| 6 | XRST | I | Reset signal for the horizontal and vertical driver | |
| 7 | FRP | I | Liquid crystal driving signal ("Off" pixel) | |
| 8 | XFRP | I | Liquid crystal driving signal ("On" pixel) | |
| 9 | VDD1 | P | Power supply for the horizontal driver and pixel memory | |
| 10 | GND | P | GND for the LCD | |
| 11 | HST | I | Start signal for the horizontal driver | |
| 12 | HCK | I | Shift clock for the horizontal driver | |
| 13 | R1 | I | Red image data (odd pixels) | |
| 14 | R2 | I | Red image data (even pixels) | |
| 15 | G1 | I | Green image data (odd pixels) | |
| 16 | G2 | I | Green image data (even pixels) | |
| 17 | B1 | I | Blue image data (odd pixels) | |
| 18 | B2 | I | Blue image data (even pixels) | |
| 19 | HOUT | O | Output from the end of the horizontal shift register | (*1-3) |
| 20 | VCOM | I | Common electrode driving signal | |
| 21 | NC | NC | Not connected to the LCD | (*1-2) |

Note)

(*1-2) It is recommended to connect to GND.

(*1-3) Do not connect any signal or power wire to these terminals.

2. ABSOLUTE MAXIMUM RATINGS

| PARAMETER | RATINGS | UNIT | REMARKS |
|--|------------|------|---------|
| Power supply voltage | 6.3 | V | |
| VCOM, FRP and XFRP signal voltage | 0 to 6.3 | V | |
| Input control signal voltage | 0 to 6.3 | V | (*2-1) |
| Operating temperature range (LCD panel surface) | -20 to +70 | °C | (*2-2) |
| Storage temperature range | -30 to +80 | °C | (*2-2) |

Note)

(*2-1) HST, HCK, XRST, VST, VCK, ENB, R1, G1, B1, R2, G2, B2

(*2-2) Maximum wet-bulb temperature is less than 39°C. Do not condense dew.

3. ELECTRICAL CHARACTERISTICS

3.1 POWER SUPPLY VOLTAGE

| PARAMETER | SYMBOL | Min. | Typ. | Max. | UNIT | REMARK |
|-----------------------|--------|------|------|------|------|--------|
| Power supply voltage1 | VDD1 | 3.1 | 3.2 | 3.3 | V | |
| Power supply voltage2 | VDD2 | 4.4 | 4.5 | 4.6 | V | |
| Ground for LCD | GND | | 0 | | V | |

3.2 INPUT SIGNAL VOLTAGE

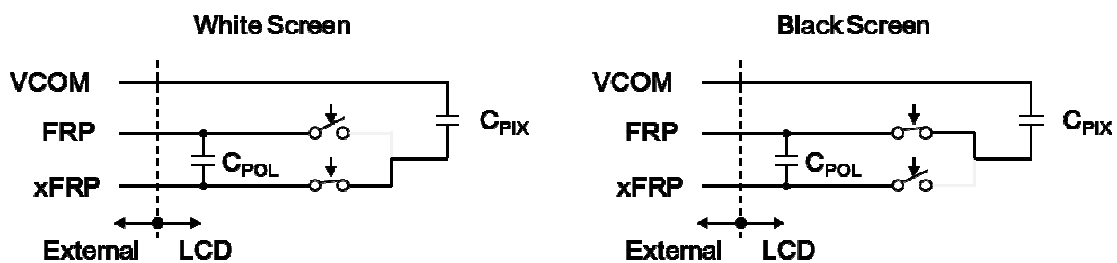
| PARAMETER | | Min. | Typ. | Max. | UNIT | REMARK |
|----------------------|------|------------|------|-----------|------|--------|
| Input control signal | High | VDD1 - 0.1 | VDD1 | VDD1 | V | (*3-1) |
| | Low | GND | GND | GND + 0.1 | V | |
| VCOM, FRP, XFRP | High | VDD1 - 0.1 | VDD1 | VDD1 | V | |
| | Low | GND | GND | GND + 0.1 | V | |

Note)

(*3-1) HST, HCK, XRST, VST, VCK, ENB, R1, G1, B1, R2, G2, B2

3.3 INPUT TERMINAL CAPACITANCE

| PARAMETER | SYMBOL | Min. | Typ. | Max. | UNIT | REMARK |
|----------------------|-------------------------------------|------|--------|--------|------|--------|
| Input control signal | C _{IN} | - | 10 | 14 | pF | |
| VCOM | C _{PIX} | - | 30 | 42 | nF | |
| FRP | C _{PIX} + C _{POL} | - | 30 + 5 | 42 + 7 | nF | |
| XFRP | C _{PIX} + C _{POL} | - | 30 + 5 | 42 + 7 | nF | |



3.4 POWER CONSUMPTION

STATIC IMAGE (VCOM frequency: 60Hz)

Driving Condition: VDD1=3.2V, VDD2=4.5V, Ta=25°C, White screen, Without Backlight

| PARAMETER | SYMBOL | Min. | Typ. | Max. | UNIT |
|--------------------------|--------|------|-------|-------|------|
| VDD1 current consumption | IVDD1 | - | 1 | 15 | uA |
| VDD2 current consumption | IVDD2 | - | 1 | 19 | uA |
| Total power consumption | PWR | - | 0.008 | 0.134 | mW |

STATIC IMAGE (Refresh rate: 1Hz, VCOM frequency: 60Hz)

Driving Condition: VDD1=3.2V, VDD2=4.5V, Ta=25°C, White screen, Without Backlight

| PARAMETER | SYMBOL | Min. | Typ. | Max. | UNIT |
|--------------------------|--------|------|-------|-------|------|
| VDD1 current consumption | IVDD1 | - | 2 | 17 | uA |
| VDD2 current consumption | IVDD2 | - | 2 | 21 | uA |
| Total power consumption | PWR | - | 0.015 | 0.149 | mW |

MOVING IMAGE (Refresh rate: 30Hz, VCOM frequency: 60Hz)

Driving Condition: VDD1=3.2V, VDD2=4.5V, Ta=25°C, White screen, Without Backlight

| PARAMETER | SYMBOL | Min. | Typ. | Max. | UNIT |
|--------------------------|--------|------|-------|-------|------|
| VDD1 current consumption | IVDD1 | - | 37 | 59 | uA |
| VDD2 current consumption | IVDD2 | - | 3 | 23 | uA |
| Total power consumption | PWR | - | 0.132 | 0.292 | mW |

3.5 AC CHARACTERISTICS

Driving Condition: VDD1=3.2V, VDD2=4.5V, Ta=25°C

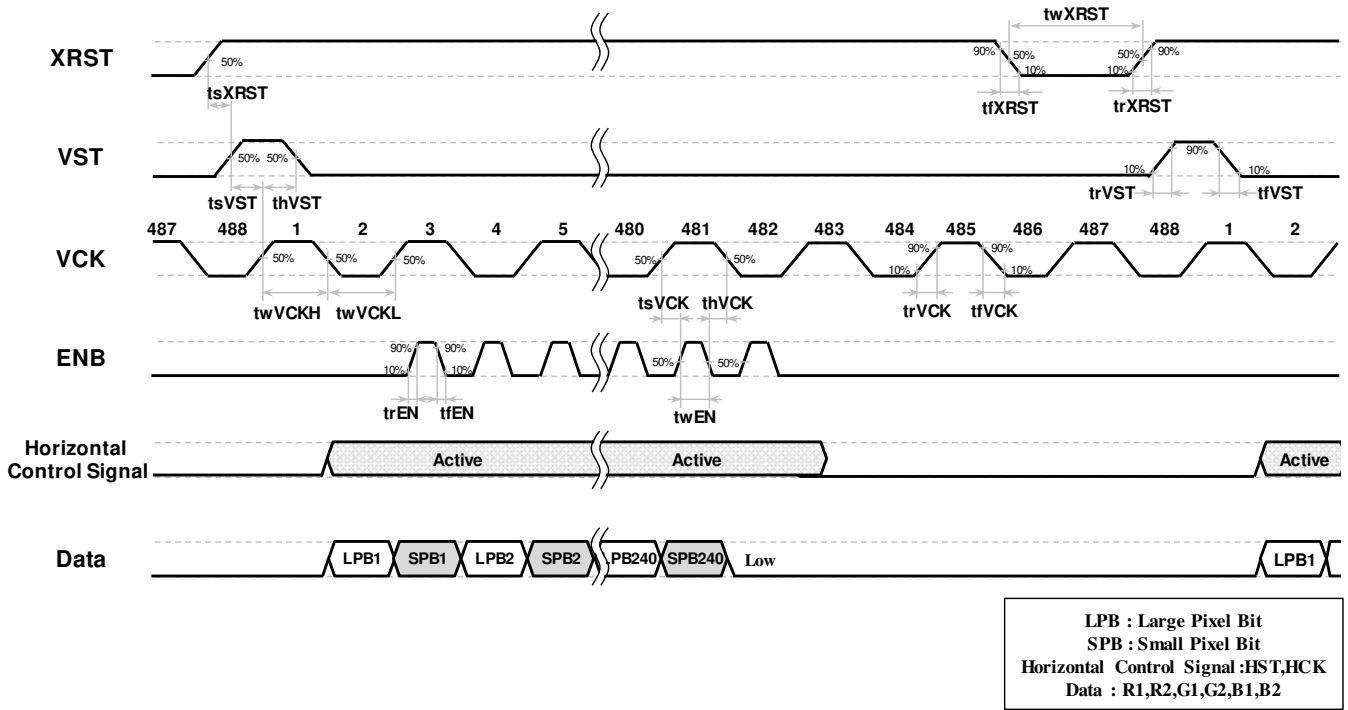
| PARAMETER | SYMBOL | Min. | Typ. | Max. | UNIT | REMARK |
|----------------------------|--------|-------|--------|-------|--------|--------|
| Vertical Pixel Number | - | - | 240 | - | Pixels | |
| Vertical Frequency | Fv | | 30.53 | 41.99 | Hz | |
| Vertical Period | Tv | 23.82 | 32.75 | - | msec | |
| Vertical Clock Number | Nv | - | 488 | - | Clocks | |
| Vertical Blanking Number | Nvbl | - | 8 | - | Clocks | |
| Horizontal Pixel Number | - | - | 240 | - | Pixels | |
| Horizontal Clock Number | Nh | - | 122 | - | Clocks | |
| Horizontal Blanking Number | Hbl | - | 2 | - | Clocks | |
| HST rising time | trHST | - | - | 50 | nsec | |
| HST falling time | tfHST | - | - | 50 | nsec | |
| HST set-up time | tsHST | 200 | 270 | - | nsec | |
| HST hold time | thHST | 200 | 280 | - | nsec | |
| HST delay time | tdHST | 400 | 550 | - | nsec | |
| HCK rising time | trHCK | - | - | 50 | nsec | |
| HCK falling time | tfHCK | - | - | 50 | nsec | |
| HCK High width | tcHCKH | 400 | 550 | - | nsec | |
| HCK Low width | tcHCKL | 400 | 550 | - | nsec | |
| DATA rising time | trDT | - | - | 50 | nsec | |
| DATA falling time | tfDT | - | - | 50 | nsec | |
| DATA set-up time | tsDT | 200 | 270 | - | nsec | |
| DATA hold time | thDT | 200 | 280 | - | nsec | |
| VST rising time | trVST | - | - | 50 | nsec | |
| VST falling time | tfVST | - | - | 50 | nsec | |
| VST set-up time | tsVST | 24.00 | 33.00 | - | usec | |
| VST hold time | thVST | 24.80 | 34.10 | - | usec | |
| VCK rising time | trVCK | - | - | 50 | nsec | |
| VCK falling time | tfVCK | - | - | 50 | nsec | |
| VCK High width | twVCKH | 48.80 | 67.10 | - | usec | |
| VCK High width | twVCKH | 1.00 | - | - | usec | (*3-1) |
| VCK Low width | twVCKL | 48.80 | 67.10 | - | usec | |
| VCK Low width | twVCKL | 1.00 | - | - | usec | (*3-1) |
| VCK set-up time | tsVCK | 12.80 | 17.60 | - | usec | |
| VCK hold time | thVCK | 11.20 | 15.40 | - | usec | |
| ENB rising time | trEN | - | - | 50 | nsec | |
| ENB falling time | tfEN | - | - | 50 | nsec | |
| ENB High width | twEN | 24.80 | 34.10 | - | usec | |
| XRST rising time | trXRST | - | - | 50 | nsec | |
| XRST falling time | tfXRST | - | - | 50 | nsec | |
| XRST Low width | twXRST | 97.60 | 134.20 | - | usec | |
| XRST set-up time | tsXRST | 12.80 | 17.60 | - | usec | |
| VCOM cycle time | tcVCOM | 1 | - | 60 | Hz | (*3-2) |
| VCOM rising time | trVCOM | - | - | 100 | usec | |
| VCOM falling time | tfVCOM | - | - | 100 | usec | |

Note) (*3-1) Partial Update Mode (non-updated area)

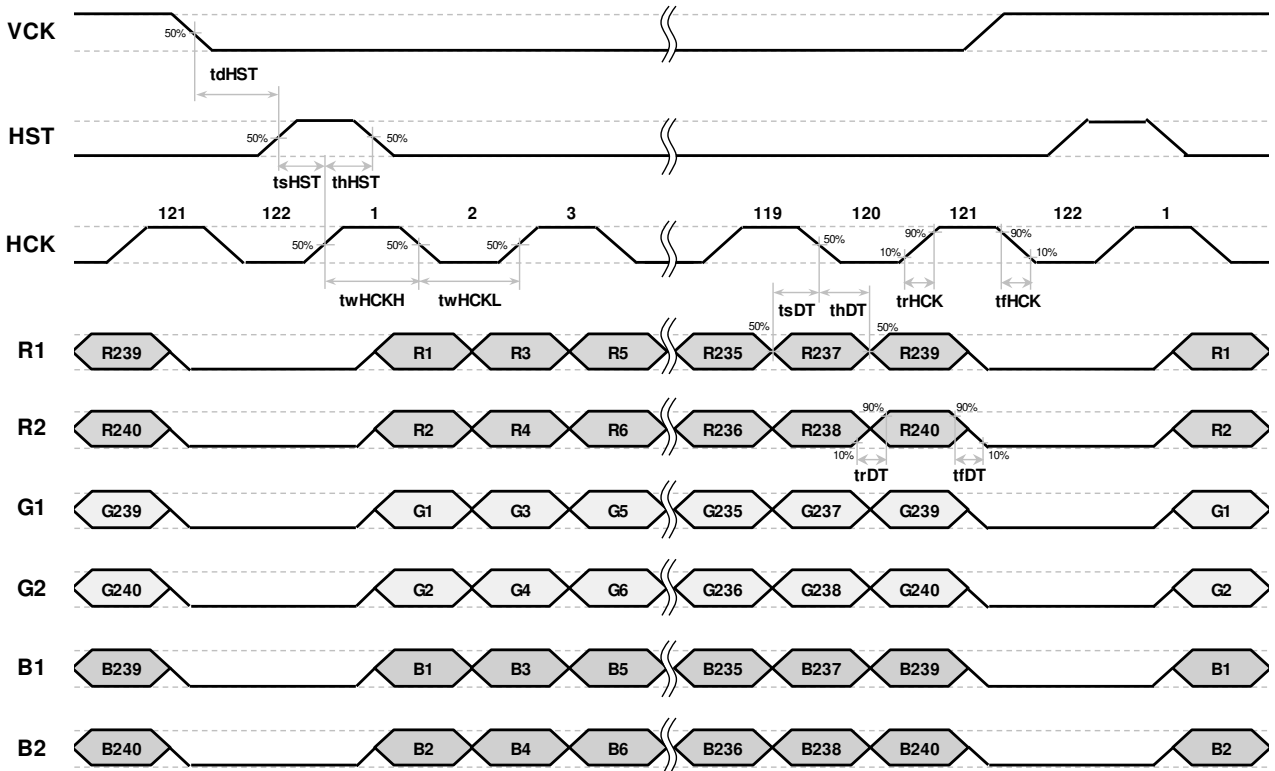
(*3-2) COM frequency should be around 60Hz for transmissive mode.

3.6 TIMING DIAGRAM (UPDATE MODE)

3.6.1 VERTICAL

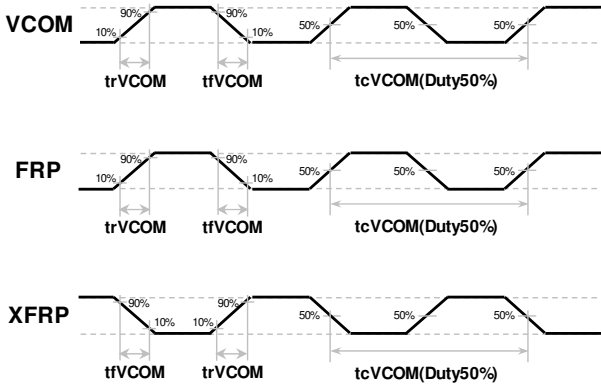


3.6.2 HORIZONTAL



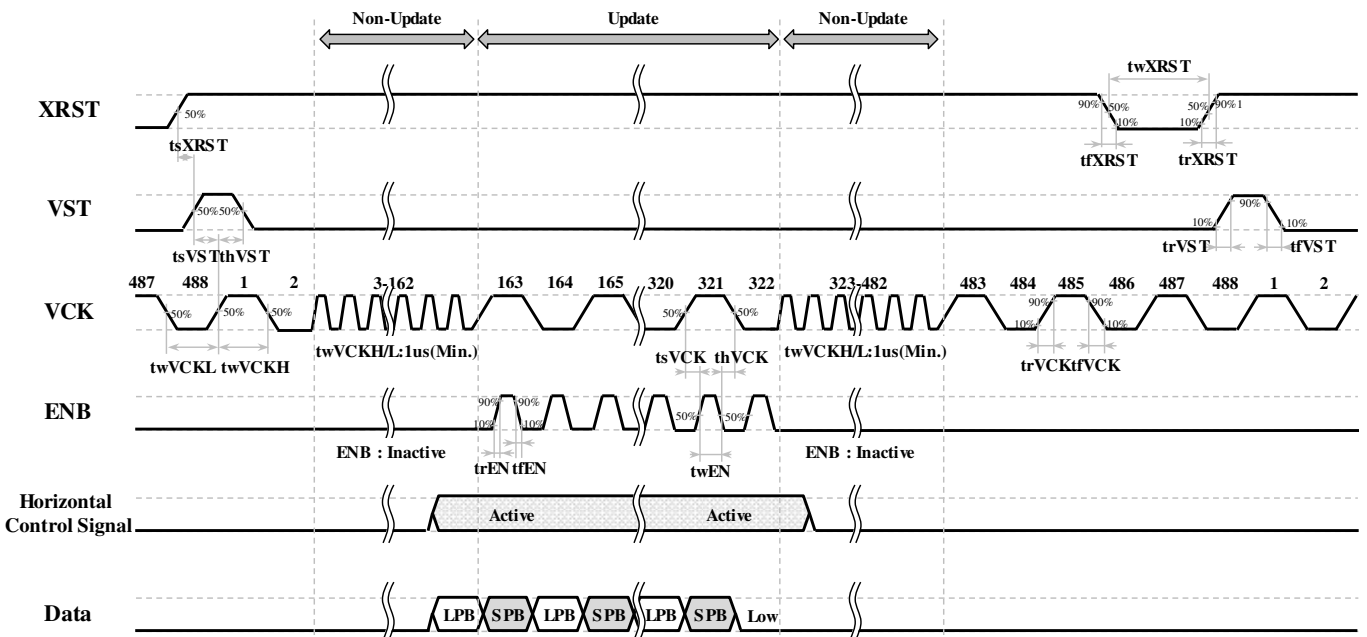
3.6.3 VCOM, FRP, XFRP

FRP is the same signal as VCOM, and XFRP is the inverse signal of VCOM and FRP.



3.7 TIMING DIAGRAM (PARTIAL-UPDATE MODE)

When 80-160 lines of the image is updated.

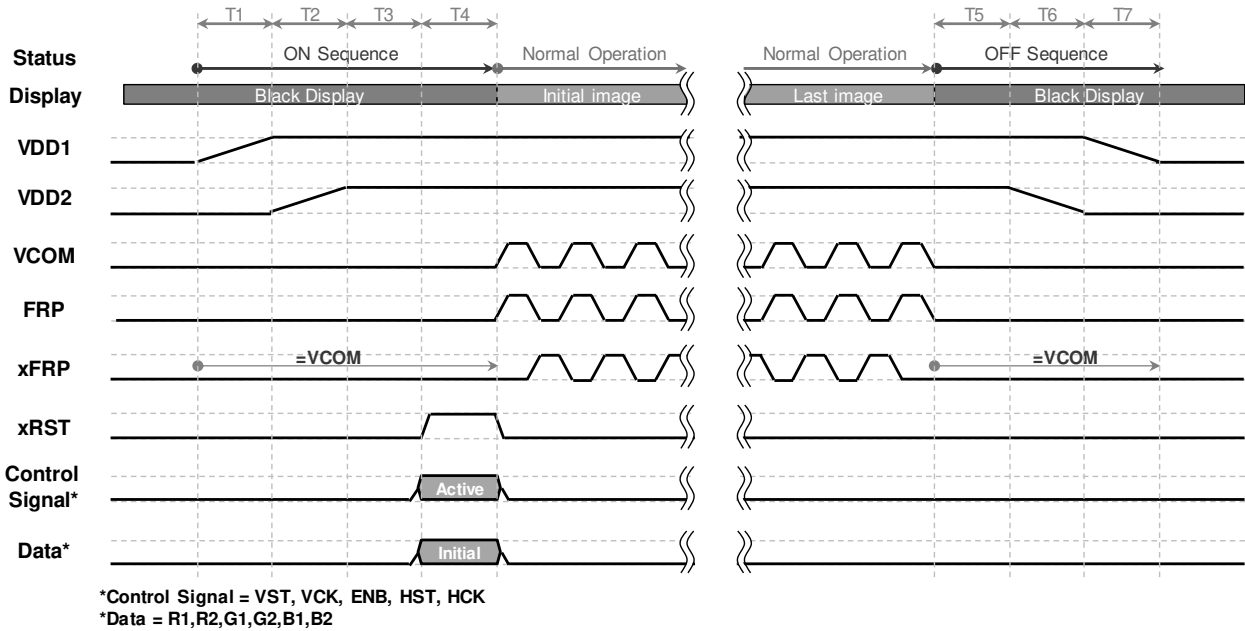


LPB : Large Pixel Bit
 SPB : Small Pixel Bit
 Horizontal Control Signal:HST,HCK
 Data : R1,R2,G1,G2,B1,B2

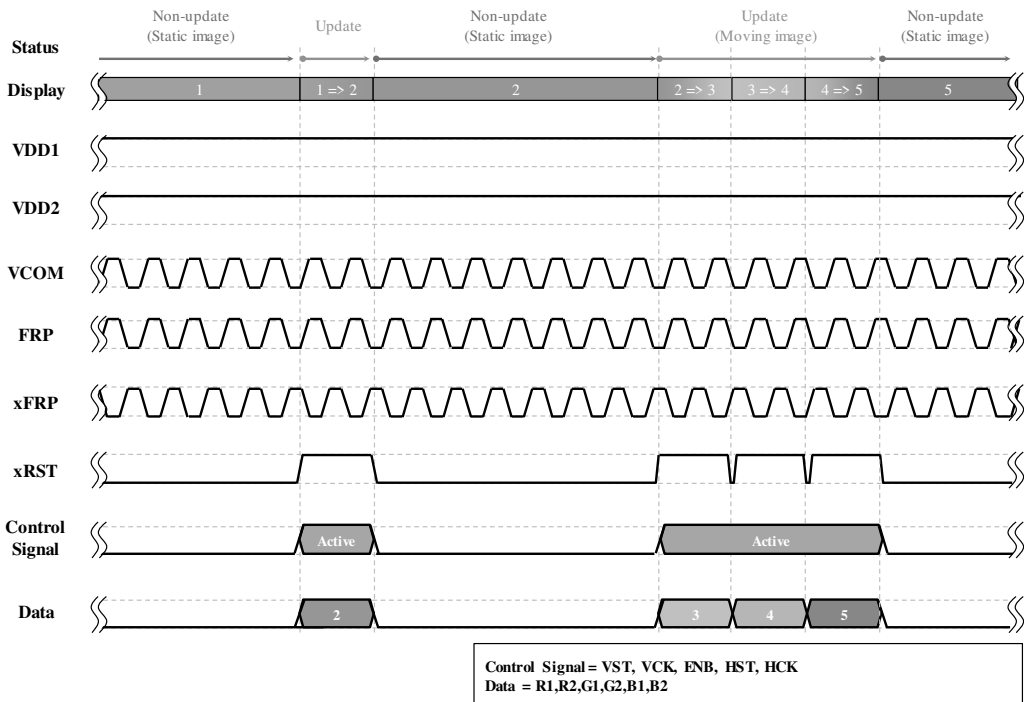
3.8 RECOMMENDED SEQUENCE

3.8.1 ON/OFF SEQUENCE

- | | |
|---|--|
| <p>[On Sequence]</p> <ol style="list-style-type: none"> 1) VDD1 Rise Time T1; Depends on IC 2) VDD2 Rise Time T2; Depends on IC 3) Internal Circuit Rest Time T3; twXRST or more 4) Pixel Memory Initialize Time T4: 1Frame | <p>[OFF Sequence]</p> <ol style="list-style-type: none"> 1) Pixel electrode discharge time T5; twXRST or more 2) VDD2 fall time T6; Depends on IC 3) VDD1 fall time T7; Depends on IC |
|---|--|



3.8.2 MODE CHANGE SEQUENCE



4. PIXEL LAYOUT

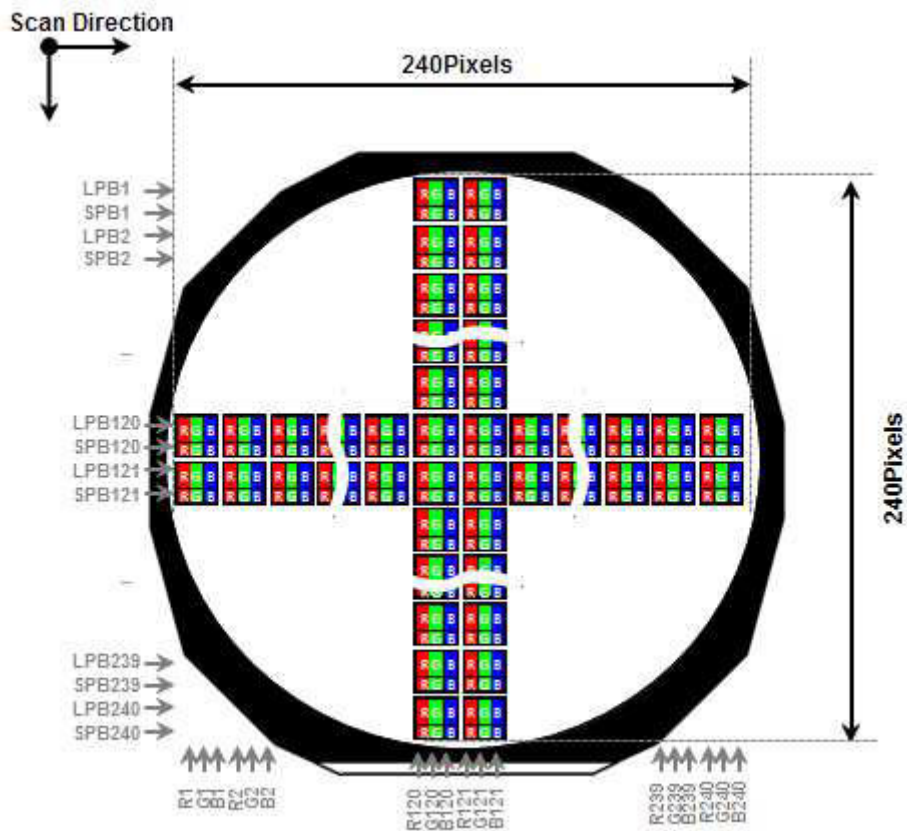
The LCD has 6-bit-per-pixel (bpp) memory, and it is capable of displaying 64 colors.

Every RGB sub pixel has 2-bit Memory; Large pixel bit (LPB) of 2/3 area and Small pixel bit (SPB) of 1/3 area

There are 4 conditions of the pixel memory, which are as follows.

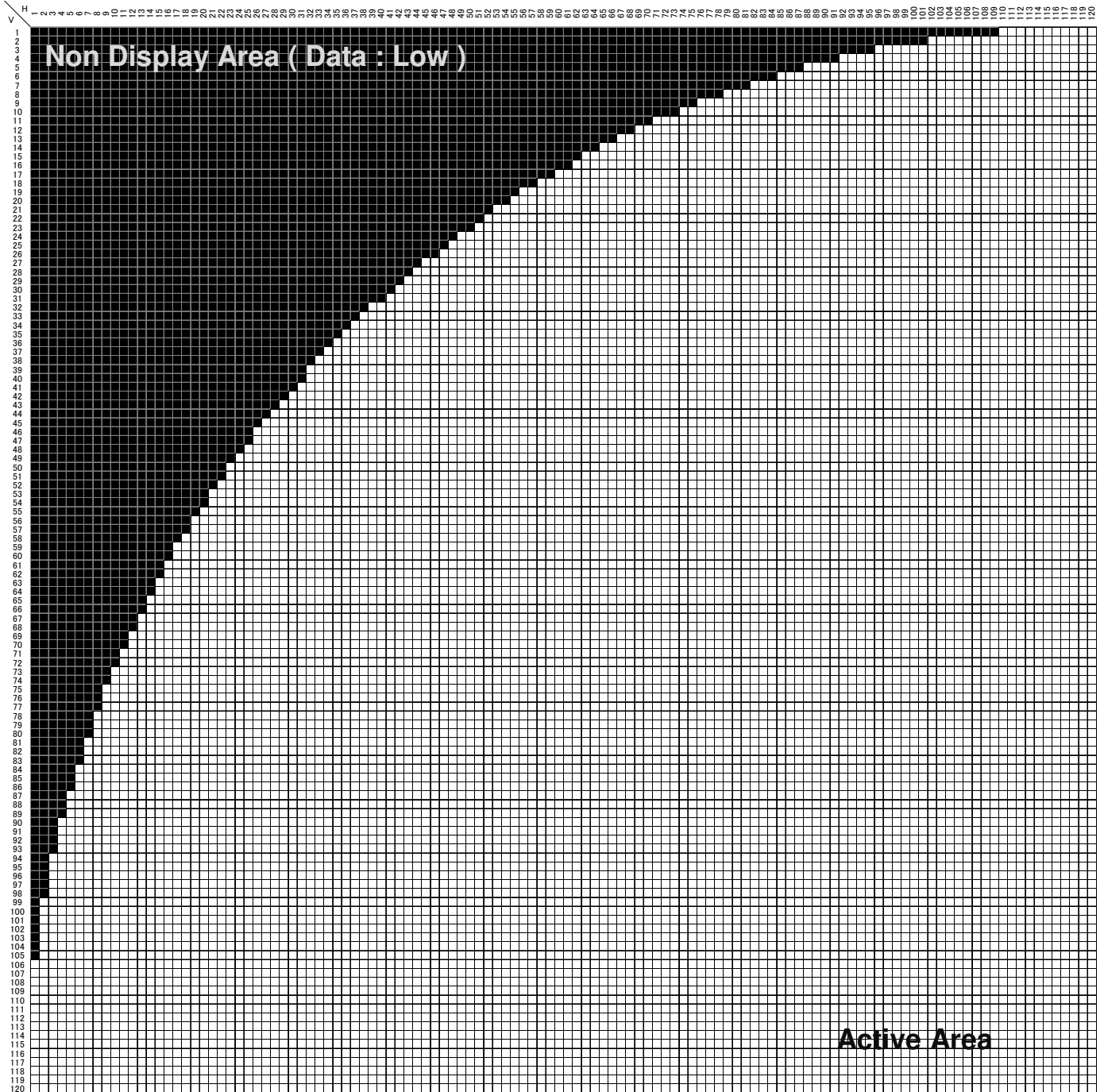
- 1) LPB and SPB are both high; 100% brightness
- 2) LPB is high, SPB is low; 67% brightness
- 3) LPB is low, SPB is high; 33% brightness
- 4) LPB and SPB are both Low; 0% brightness

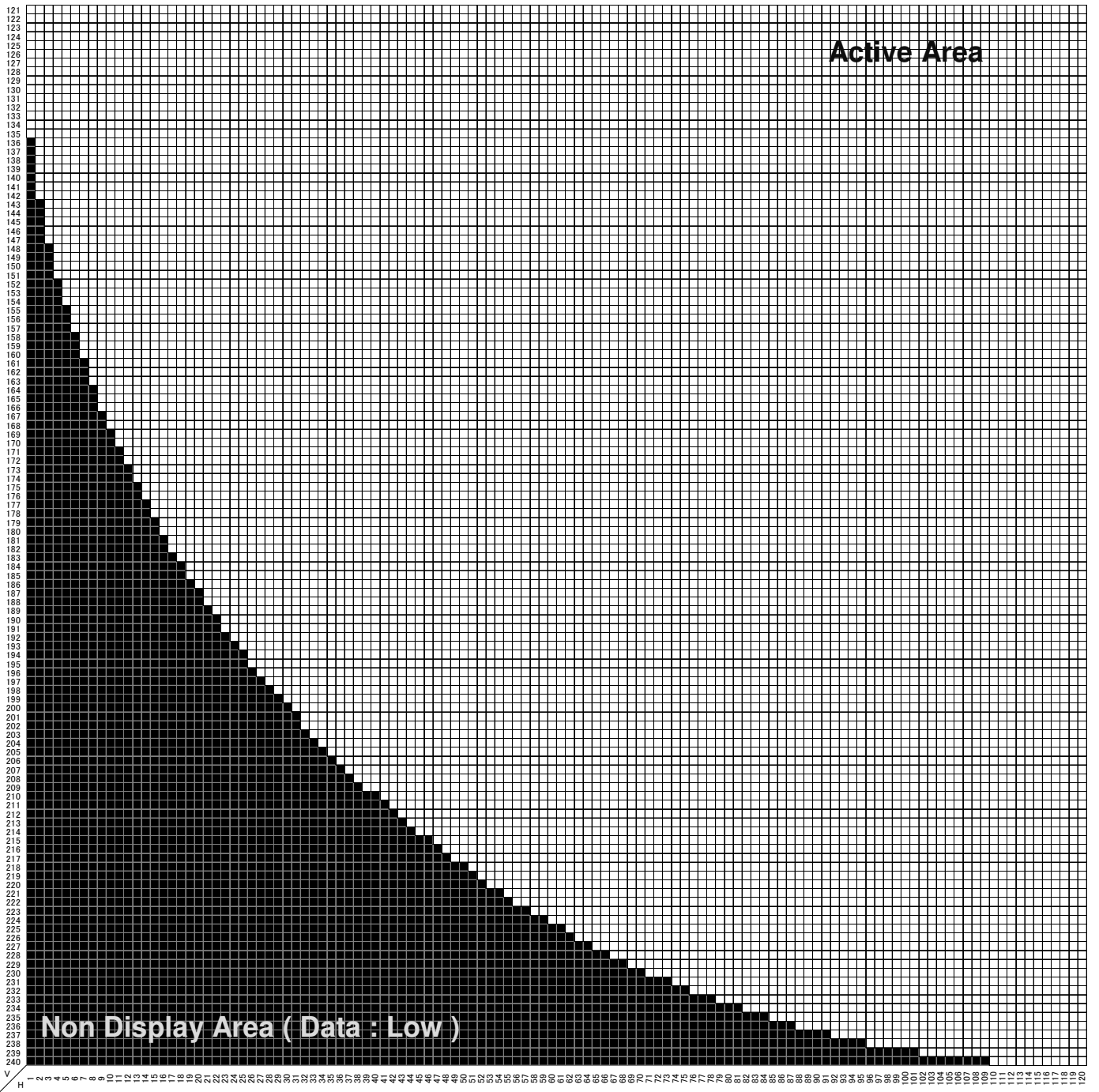
4.1 PIXEL CONFIGURATION

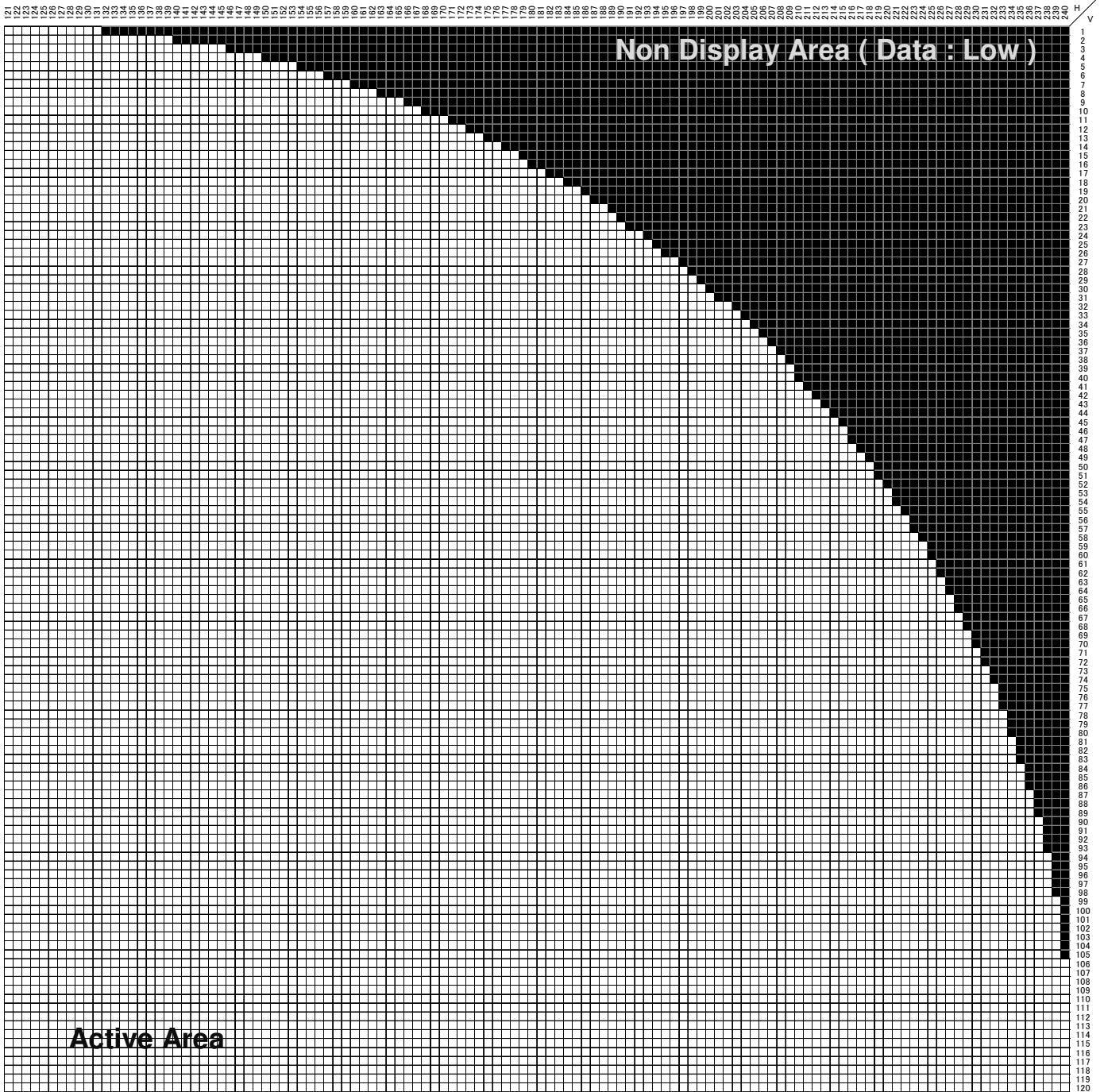


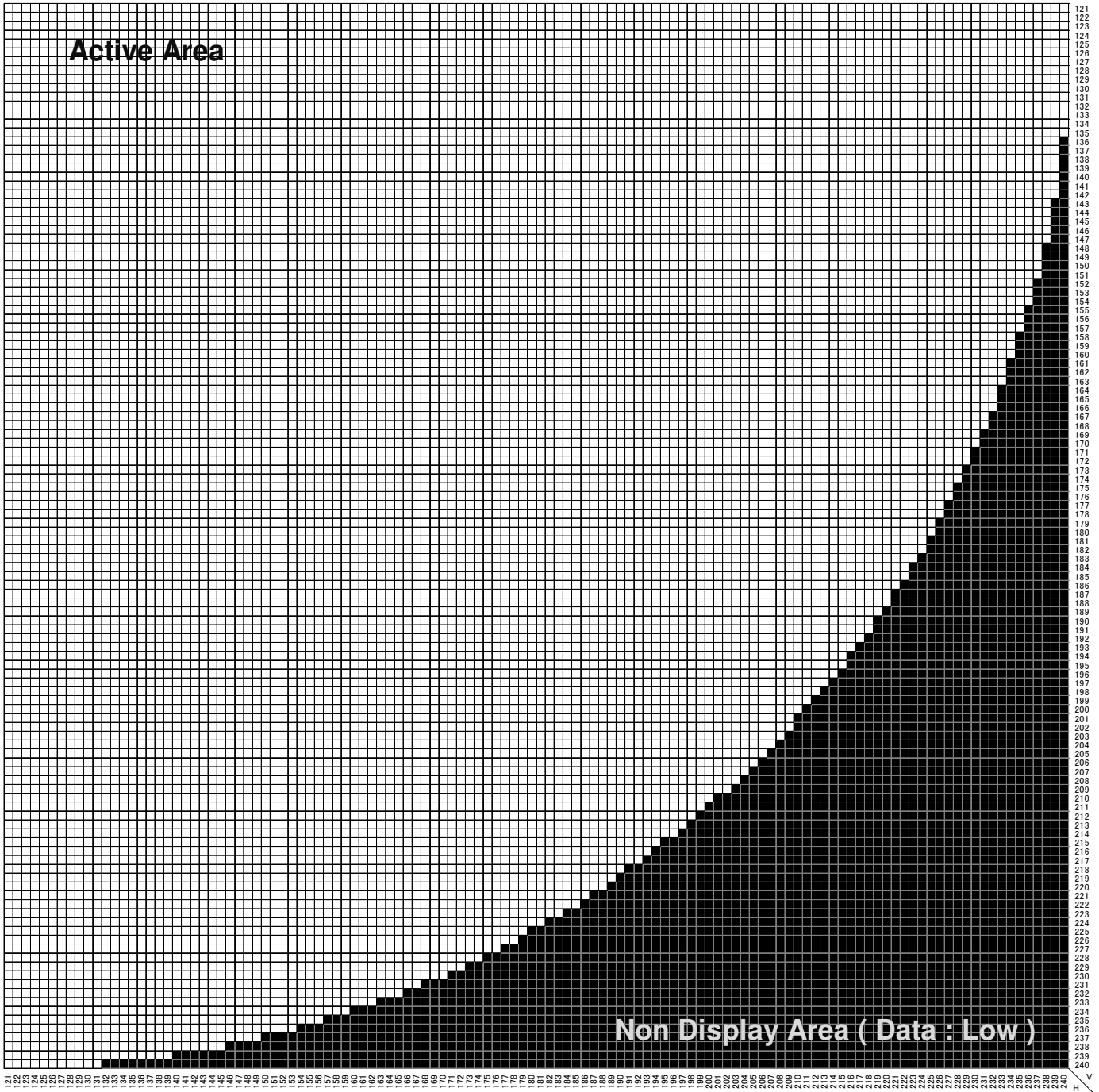
4.2 PIXEL ADDRESS MAP

The Active area of this LCD is round in shape.
Thus input square image (240x240 pixels) is cropped to fit active area.
Keep RGB signal Low out of the active area to reduce power consumption.









5. OPTICAL SPECIFICATION

5.1 OPTICAL CHARACTERISTICS

5.1.1 REFLECTIVE MODE

Driving Condition: VDD1=3.2V, VDD2=4.5V, VCOM frequency = 60Hz±10%

| Item | Symbol | Temp. (°C) | Rating | | | Unit | Definition (Measurement setup) | Remark |
|-------------------------|--------|---------------|--------|-------|------|------|--|------------------|
| | | | Min. | Typ. | Max. | | | |
| Contrast | CR | 25 | 10 | 20 | - | - | 1 | |
| Response | Tr | 25 | - | 3 | 6 | ms | 2 | Black → White |
| | Td | | - | 6 | 10 | | | White → Black |
| Color coordinates | Rx | 25 | - | 0.505 | - | - | 3 | *Reference value |
| | Ry | | - | 0.315 | - | | | |
| | Gx | | - | 0.300 | - | | | |
| | Gy | | - | 0.445 | - | | | |
| | Bx | | - | 0.170 | - | | | |
| | By | | - | 0.175 | - | | | |
| | Wx | | - | 0.315 | - | | | |
| | Wy | | - | 0.338 | - | | | |
| NTSC ratio | - | 25 | (16) | 23 | - | % | 4 | |
| Reflectance | - | 25 | (18) | 23 | - | % | Basic measurement condition & Measurement system | |
| Viewing Angle (CR>2) | θL | 25 | 45 | 60 | - | deg | 5 | Horizontal |
| | θR | | 50 | 65 | - | | | Vertical |
| | θT | | 50 | 65 | - | | | |
| | θB | | 45 | 60 | - | | | |

*() : Reference value

5.1.2 TRANSMISSIVE MODE

Driving Condition: VDD1=3.2V, VDD2=4.5V, VCOM frequency = 60Hz±10%

| Item | Symbol | Temp. (°C) | Rating | | | Unit | Definition (Measurement setup) | Remark |
|---------------|--------|---------------|--------|--------|------|------|-----------------------------------|--------|
| | | | Min. | Typ. | Max. | | | |
| Transmittance | T | 25 | - | (0.60) | - | % | 6 | |

*() : Reference value

5.2 DEFINITION AND CONDITION OF OPTICAL CHARACTERISTICS

5.2.1 DEFINITIONS OF OPTICAL CHARACTERISTICS

Definition 1

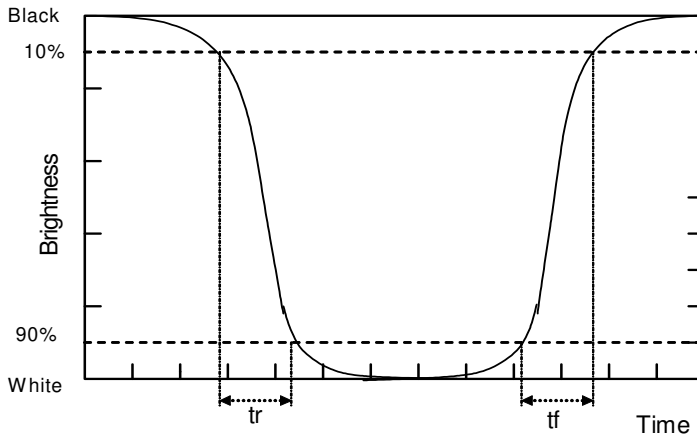
This is a ratio between the screen surface reflectance(transmittance) of the white raster and the black raster.

$$\text{Contrast ratio (CR)} = \frac{\text{Reflection(Transmission) intensity on all pixels White}}{\text{Reflection(Transmission) intensity on all pixels Black}}$$

Definition 2

The response time is defined as the following figure and shall be measured by matching the input signal for “Black” and “White”.

- Normally Black mode



tr : Response time from Black to White
tf : Response time from White to Black

Definition 3

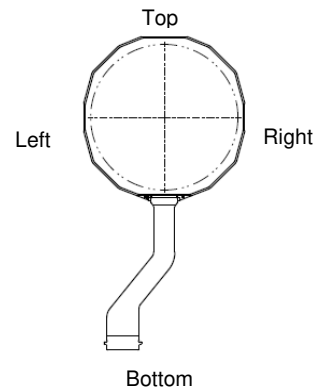
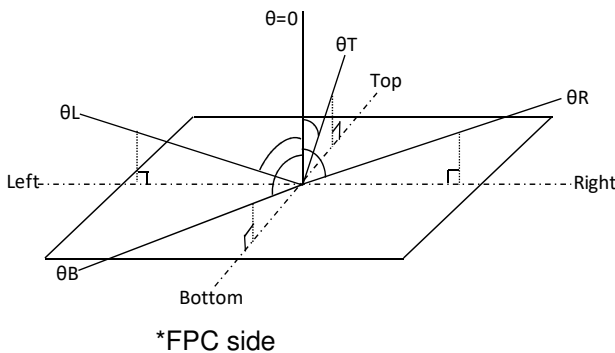
This is the x-y coordinate of Red, Green, Blue and White colors specified on the CIE1931 chromaticity diagram. (* It is not a guaranteed value)

Definition 4

This is an area of a triangle shaped by R, G and B coordinates on the CIE1931 chromaticity diagram.

Definition 5

This is a maximum angle θ from the normal direction that keeps having the contrast more than 2.



Definition 6

Transmittance and contrast are defined by the result of measuring backlight provided by Japan Display Inc.

- Measurement method of optical characteristics -

< Basic measurement conditions >

a) Driving voltage

VDD1 = 3.2V, VDD2 = 4.5V

b) Measurement temperature

25°C unless otherwise specified

c) Measurement point

Center of the Active area (one point) unless otherwise specified

d) Measurement equipment

Reflective mode: LCD-5200 (Otsuka Electronics) or similar instrument

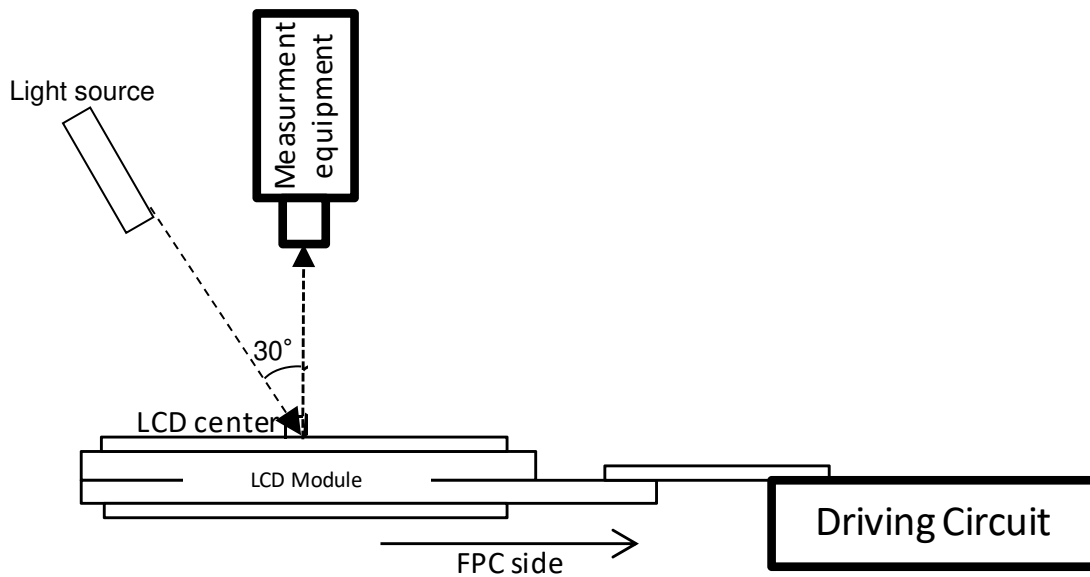
Transmissive mode: CS-2000A or similar instrument

f) Light source

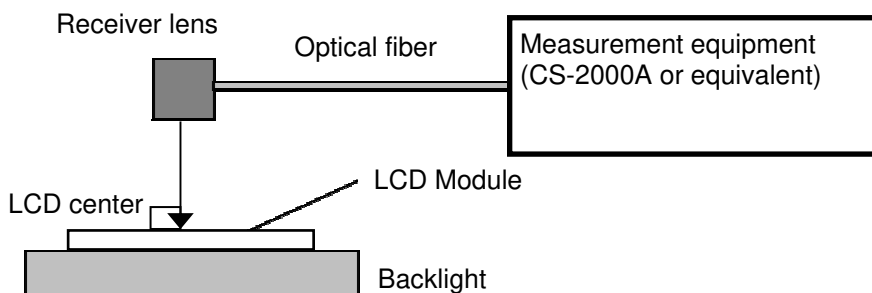
Parallel light source

- Light source input direction: form TOP side (30°)
- Light source receive direction: at LCD center (0°)

< Measurement system- I for reflective mode >



< Measurement system- II for transmissive mode >



6. INSPECTION

6.1 QUALITY STANDARD

6.1.1 INSPECTION CONDITION

(1) Ambient Conditions

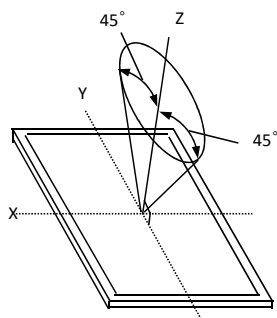
Temperature : 25 °C ($\pm 5^{\circ}\text{C}$)
Humidity : 60% ($\pm 20\%$)
Ambient Luminance : 1000 – 2000 lux
Supply Voltage : VDD1=3.2(V) / VDD2=4.5(V)

(2) Viewing Distance

The distance between the LCD and the inspector's eyes should be 30cm ($\pm 10\text{cm}$).

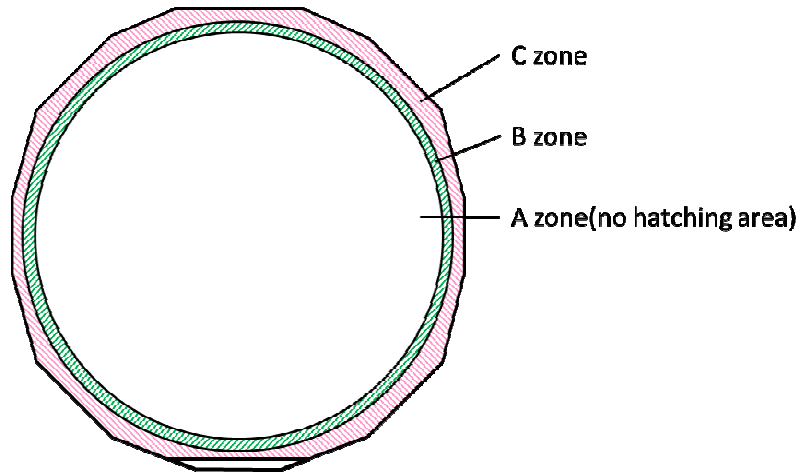
(3) Viewing Angle

Viewing angle shall be ± 45 degrees from the vertical direction as shown below.



6.1.2 ZONE DEFINITION

A zone : Active area
B zone : Viewing area
C zone : Except A and B zone



*For detail dimensions refer to outline drawing.

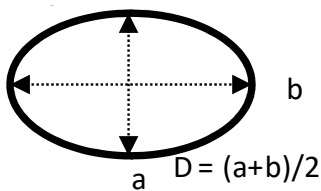
6.1.3 TREATMENT OF PROBLEMS

If there are any troubles which are concerned with our products assembled at your company's manufacturing processes, both companies shall jointly investigate and resolve the cause.

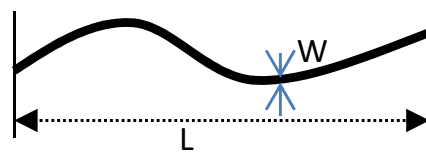
6.2 DISPLAY APPEARANCE STANDARDS

| Item | | Zone | Criteria | | Remark |
|------------------|--|------|--------------------------------|--------|---|
| Name | Cause | | Size(mm) | N. | |
| Dot type defect | B/W spot (Dent in glass or Upper polarizer, Particle, Swell) Bright/Dark dot defect | A | $D \leq 0.15$ | Ignore | Keep two defect distance more than 5mm |
| | | | $0.15 < D \leq 0.25$ | 2 | |
| | | | $0.25 < D$ | 0 | |
| | | B | $D \leq 0.25$ | Ignore | Keep two defect distance more than 5mm |
| | | | $0.25 < D \leq 0.3$ | 3 | |
| | | | | C | Ignore |
| Line type defect | Scratch on polarizer or Foreign material between Upper polarizer and glass | A | $W \leq 0.03$ | Ignore | Keep two defect distance more than 5mm |
| | | | $0.03 < W \leq 0.08, L \leq 2$ | 2 | |
| | | | $0.08 < D \text{ or } 2 < L$ | 0 | |
| | | B | $W \leq 0.10, L \leq 3$ | 3 | |
| | | | $0.10 < W \text{ or } 3 < L$ | 0 | |
| | | C | Ignore | | |
| Air bubble | Air bubble | A | $D2 \leq 0.25$ | 2 | |
| | | | $D1 \leq 0.20$ | 2 | |
| | | | $0.5 < D1 + D2$ | 0 | |
| | | B | Ignore | | |
| | | C | Ignore | | |

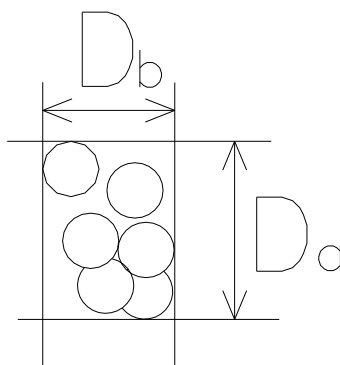
Dot type defect



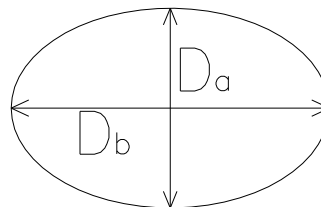
Line type defect



Aggregate of small air bubbles



Big air bubble



*When there is an agreement limit samples, Item is judged according to the limit sample.

*Total defect quantity: A zone ($N \leq 3$) * each inspection (lighting / appearance) , B zone ($N \leq 5$)

*Other items are to be decided by agreement between both parties.

*Aggregate of small air bubbles: The longer one is defined as D1 among Da and Db.

*Big air bubble: The longer one is defined as D2 among Da and Db.

6.3 EXTERNAL APPEARANCE STANDARDS

| Item | Criteria | | Remarks |
|------------------------|--------------------------------------|--------|-----------------------------------|
| | Size(mm) | Number | |
| Chipping | (A) $W \leq 3, L \leq 0.2, T = 1/2t$ | Ignore | Fig.1 |
| | (B) $W \leq 3, L \leq 0.6, T < 1/2t$ | Ignore | Fig.2 |
| | Except (A) & (B) | 0 | |
| Chipping on the corner | Showing on below figure | | Fig.3 & Fig.7 |
| Projection | $W \leq 0.3, L \leq 5.0$ | Ignore | Fig.4 |
| | $0.3 < W$ or $5.0 < L$ | 0 | |
| Corner burr | $W \leq 0.2, L \leq 0.5$ | Ignore | Fig.5 |
| | $0.2 < W$ or $0.5 < L$ | 0 | |
| Crack (*6-1) | $W \leq 3, L \leq 0.5$ | Ignore | V-shaped chipping included, Fig.6 |
| | $3 < W$ or $0.5 < L$ | 0 | |

Note) (*6-1) "Crack" means the one which would progress further.

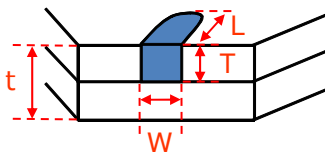


Fig.1

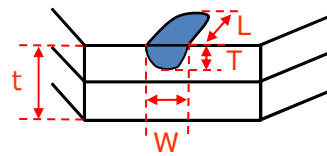


Fig.2

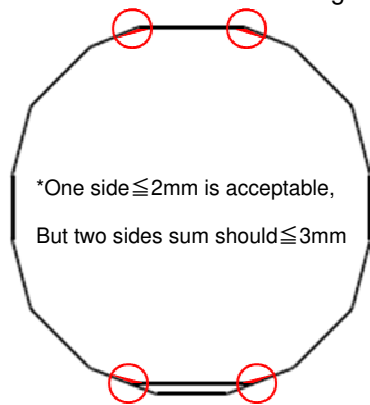


Fig.3

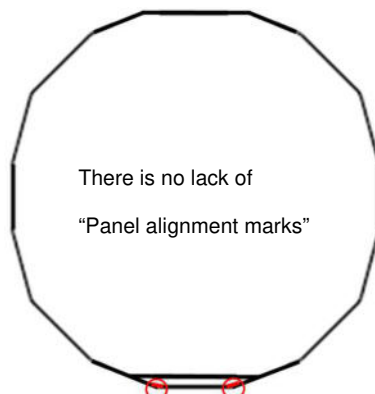


Fig.7

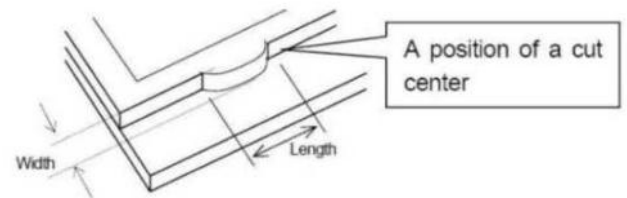


Fig.4

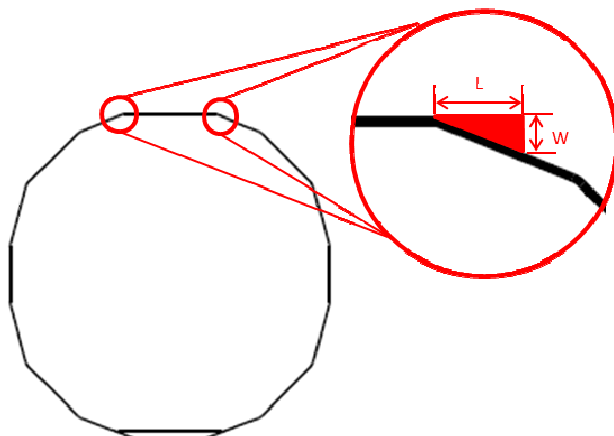


Fig.5

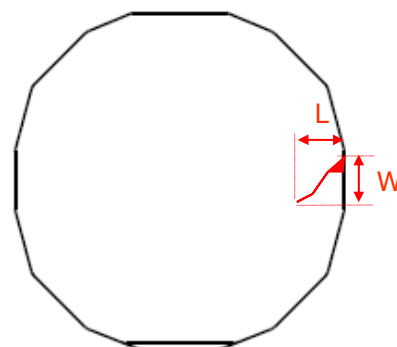


Fig.6

7. RELIABILITY SPECIFICATION**7.1 CONDITIONS OF RELIABILITY AND MECHANICAL TEST**

| No. | TEST ITEM | CONDITION | | REMARK |
|-----|---|--|--------------------------|--------|
| 1 | High Temperature Storage | Ta=80°C | 240h | |
| 2 | Low Temperature Storage | Ta=-30°C | 240h | |
| 3 | High Temperature & High Humidity Storage | Ta=60°C/90%RH (No condensation) | 240h | |
| 4 | High Temperature & High Humidity Operation | Ta=40°C/90%RH (No condensation) | 240h | |
| 5 | High Temperature Operation | Ta=70°C | 240h | |
| 6 | Low Temperature Operation | Ta=-20°C | 240h | |
| 7 | Thermal shock (non-operating) | Ta=-20°C to 70°C (30min each) | 50cycles | |
| 8 | ESD | HBM IEC 61340-3-1, ESD STM5.1 V = ±1.0kV (Contact) R = 1.5kΩ, C = 100pF | 1 time each terminal | |
| 9 | Packing Vibration | Random Vibration 5~500Hz | 101min Direction Z | (*7-1) |
| 10 | Packing Drop | Height 60cm,1 corner 3 edges,6 surfaces | 1 time Each direction | (*7-1) |

Note)

(*7-1) Tests are done using conducted package.

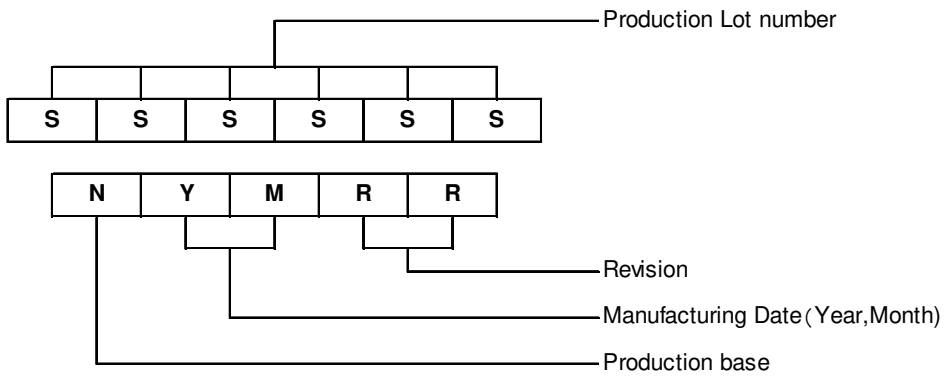
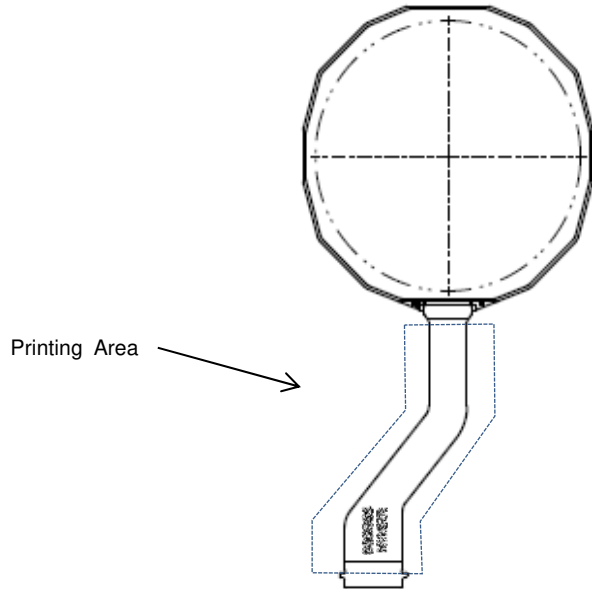
Above test evaluate for development. It is not guaranteed value for lot acceptance.

If a nonconformance is found, both parties will have a discussion to solve it.

8. DESIGNATION OF Lot MARK

8.1 LOT MARK

Lot mark is printed on the FPC of the LCD module.



| Year | Figure in lot mark |
|------|--------------------|
| 2020 | 0 |
| 2021 | 1 |
| 2022 | 2 |
| 2023 | 3 |
| 2024 | 4 |

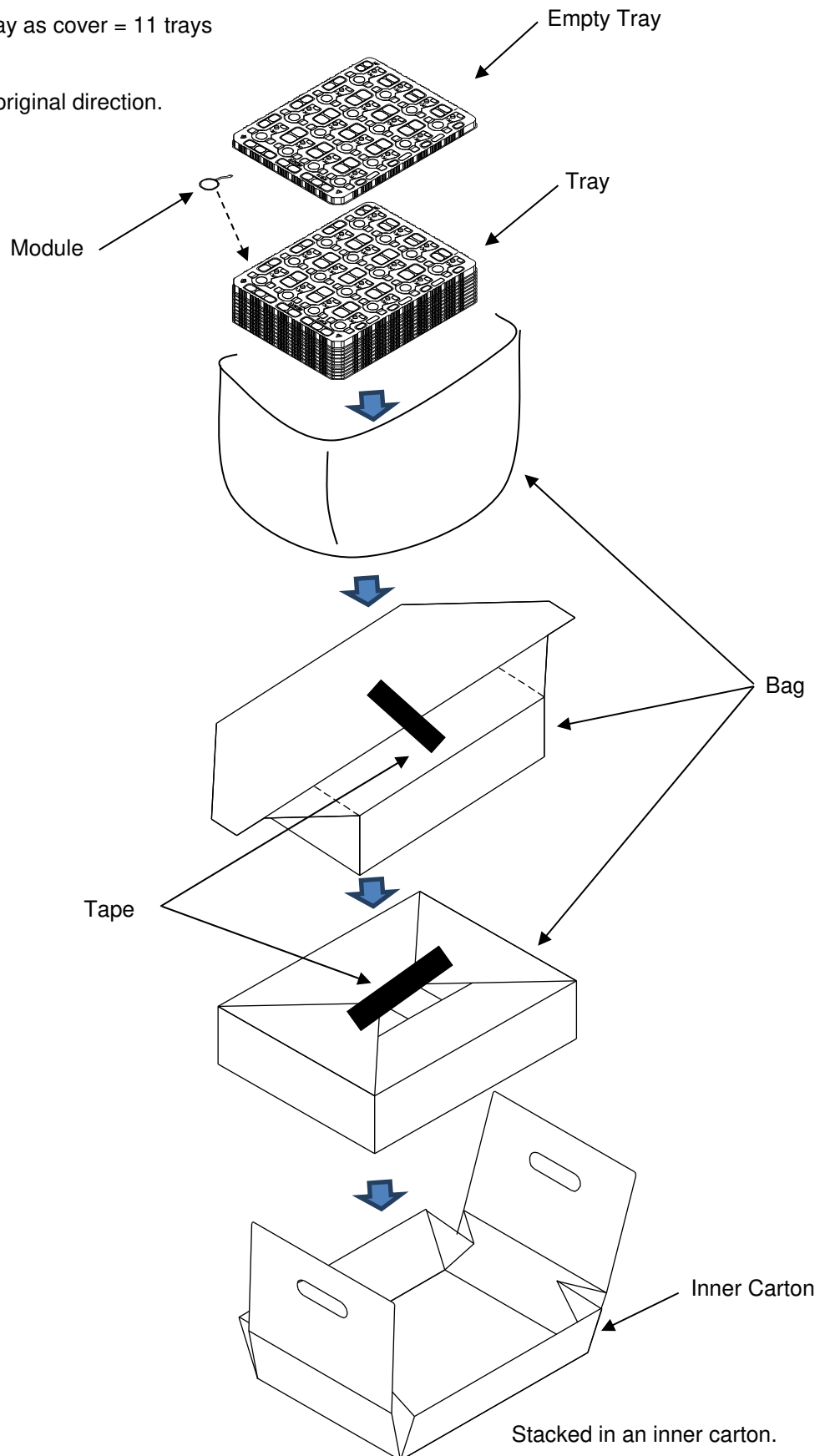
| Month | Figure in lot mark | Month | Figure in lot mark |
|-------|--------------------|-------|--------------------|
| Jan. | A | Jul. | G |
| Feb. | B | Aug. | H |
| Mar. | C | Sep. | I |
| Apr. | D | Oct. | J |
| May | E | Nov. | K |
| Jun. | F | Dec. | L |

9. PACKING SPECIFICATIONS

9.1 INNER CARTON

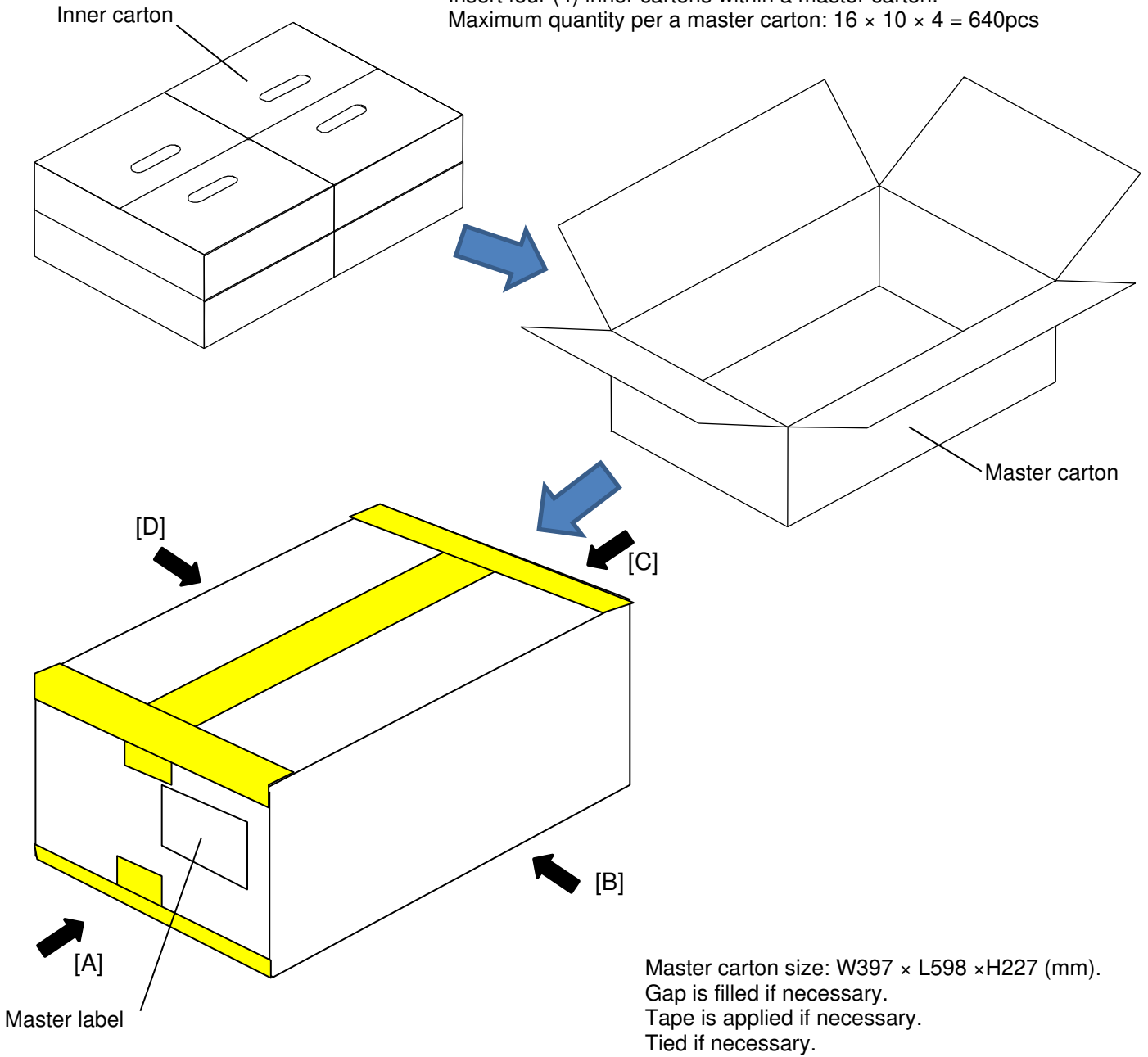
16pcs LCD modules per tray
10 trays with products + empty tray as cover = 11 trays

Note)
Tray orientation must be kept its original direction.



9.2 MASTER CARTON

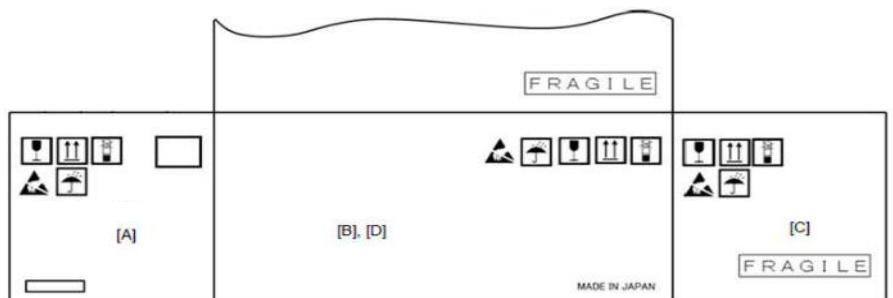
Insert four (4) inner cartons within a master carton.
Maximum quantity per a master carton: $16 \times 10 \times 4 = 640$ pcs



Contents of master label



Indication onto [A] [B] [C] [D] on master carton are shown as below



10. LCD MODULE USAGE AND PRECAUTIONS

10.1 HANDLING

- (1) The display panel is made of glass. Do not subject it to mechanical shock such as dropping it from a high position, etc.
- (2) If the display panel is damaged and internal liquid crystal substance leaks out, be sure not to inhale or consume it. If the internal liquid crystal substance comes into contact with skin or clothing, promptly wash it off using soap and running water.
- (3) Do not apply excessive force on the surface, perimeter or adjoining areas of LCD module since this may cause display panel color tone to vary.
- (4) The polarizer covering the display panel surface of the LCD module is soft and can be easily scratched or dented. Handle this polarizer carefully.
- (5) If the surface polarizer becomes contaminated, use the following recommended or equivalent adhesive tape for contaminants removal.
 - Scotch-brand mending tape (No. 810)
- (6) Do not breathe on the display surface or use Ethyl Alcohol solvent for contaminant removal as polarizer discoloration may occur. Furthermore, solvent other than mentioned above may also damage the polarizer. Especially, do not use the followings.
 - Water
 - Ketones
 - Aromatic solvents
- (7) When mounting the LCD Module, be sure that it is free from twisting, warping, or distortion. Any stress can have great influence to the display quality. Also, in cases where outer case or frame is included, be sure to secure sufficient stiffness on the outer case or frame for a robust design.
- (8) Do not apply pressure at or around the FPC bonding area and the surrounding area.
- (9) Do not attempt to disassemble or rework the LCD module.
- (10) To prevent destruction of the elements by static electricity, be careful to maintain an optimum working environment.
 - Be sure to ground your body before handling the LCD module.
 - Make sure that solder guns and all other tools required for assembly have been grounded.
 - To reduce occurrence of static electricity, avoid using this product in dry environments.
 - A protective film has been attached to the surface of the LCD panel. When peeling off the protective film, be careful to prevent electrostatic discharges.
- (11) To minimize performance degradation of the LCD module caused by destructive forces such as static electricity, etc., avoid direct contact to the following sections when handling the LCD module.
 - terminal electrodes of connector
 - wiring pattern on FPC
- (12) LCD Panel surface is protected by a protective film layer. This protective film must be removed before final product installation. After removal of protective film layer, some adhesive residues maybe left on the LCD panel, especially after long storage period, please refer to section 5) listed above for proper contaminant removal procedure.
- (13) Take precaution to minimize corrosion of electrodes. Corrosion of electrodes is accelerated by moisture, condensation or a current flow in a high-humidity environment.
- (14) Do not apply excessive pressure to the FPC part. Force type such as twist, warp, etc., may damage FCP patterning traces.
- (15) Do not use sharp, pointy or rigid tools when handing LCD panels. These objects can scratch or nick the glass panel which can cause it to crack.

- (16) Do not touch or handle the LCD module directly with bare hands. Residue of dirt, oil or water may have the possibility to cause corrosion. Be sure to wear finger sacks or gloves when handling LCD modules. When holding an LCD panel module, carefully hold the panel by the edges of the glass plate.
- (17) Avoid using LCD module under condensation or high humidity environment because polarizer etc. maybe damaged in these conditions.
- (18) Trays are used to package LCD modules for shipment. If LCD modules scratch the tray during shipment, material of the scratched tray may be left on LCD modules. In such case, clean up LCD modules after removal from trays.
- (19) When installing LCD module, don't apply excess stress of bending or stretching to the input cable
- (20) Keep NC terminal open electrically.
- (21) After storage under high humidity or condensation environment, keep LCD module under room temperature more than 30 minutes before operation.
- (22) Take precautions to handling LCD module because the glass plate has very keen edges.

10.2 DESIGN OF APPLICATION

- (1) The absolute maximum ratings represent the rated values which LCD module cannot exceed. When LCD modules are used beyond this rated value, the operating characteristics may be adversely affected.
- (2) To prevent the occurrence of erroneous operation caused by noise, special attention on satisfying VIL, VIH specified values is required. This includes taking the precautionary measures of using short cables for signal transferring.
- (3) An inherent characteristic of liquid crystal display is its temperature dependency. Be sure to use the LCD modules within the specified operating temperature range, as recognition of the display becomes difficult when the LCD module is used outside its range. Also, keep in mind that the voltage levels necessary for clear display images will vary according to temperature.
- (4) It is recommended that power supply lines to include current surge protection. (Fuse etc. recommend value: 0.5A)
- (5) Note the peripheral devices can cause mutual noise interference with LCD modules. Especially, input devices such as Touch Panel, etc., may output operational level by radiation noise even when these devices are not in operation. Actual performance confirmation and verification under actual usage environment by actual final product is highly recommended.
- (6) To avoid EMI, preventive measures should be implemented in the final product.
- (7) Display abnormality may occur with sudden removal of power supply such as device battery. Sudden removal of power supply shall be avoided at all time. LCD module quality cannot be guaranteed under such condition.
- (8) Ensure sufficient light shading measures during design phase and when assemble the LCD module.
- (9) Ensure sufficient light shading measures in the inspection process.
- (10) Similar to general electronic components, ESD may cause LCD IC to malfunction. ESD preventive measures should be considered around the LCD module.
- (11) While display data may be kept, data can be easily changed by external noise. Noise shall be minimized at device or system level.
- (12) As unexpected noise may occur, periodic refresh operation such as resend the command and display data is highly recommended as part of the software routine.
- (13) When logic circuit power is off, do not apply any signals to the input terminals.
- (14) Do not use other components such as FPC or other features to fix the LCD module position, as pressure/tension may produce undesired result such as FPC trace crack.

10.3 DISPLAY CHARACTERISTICS

- (1) Because the optimum LCD driving voltage depends on the ambient temperature, display may slightly flicker at the environment of high temperature.
- (2) One of the special characteristics of liquid crystal is that it freezes when stored at the temperature below the storage temperature range. Such freezing may cause orientation defects or bubbles (black or white) to appear in the LCD panel. Bubbles may also occur if the panel receives an impact in a low-temperature environment.
- (3) If the LCD module is left operating for a long time with the same display showing, the displayed pattern may leave traces on the screen or the contrast may become inconsistent.

10.4 KEEPING THE PRODUCTS

(1) When keeping LCD modules, avoid the following condition or environment.

- Exposure to direct sunlight or fluorescent lamps lightings.
- High-temperature/high-humidity or very low-temperature (below 0°C) environments.
- Exposure to water droplets, condensation, etc.

Furthermore, keep LCD modules in anti-static bags to prevent static electricity charge ups. Whenever possible, LCD modules should be stored in the same conditions in which they were shipped from Japan Display Inc.

(2) Take precaution to minimize corrosion of electrodes. Corrosion of electrodes is accelerated by moisture, condensation or a current flow in a high-humidity environment.

(3) Recommended keeping conditions.

- Keeping environment : +15°C to 35°C, less than 65%RH
- Duration: up to 2 months after shipping date

(4) The shipping carton must not be stacked up over 1.5m in height.

10.5 DISPOSAL

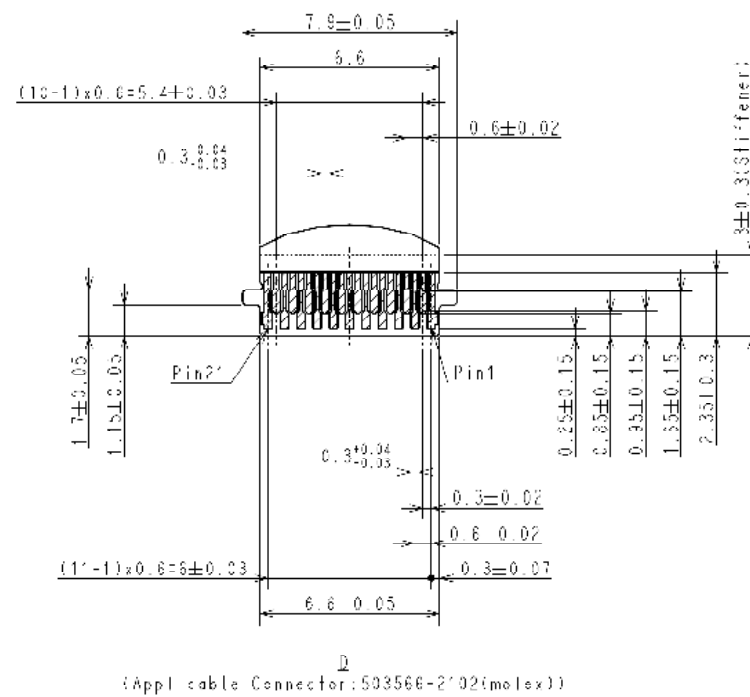
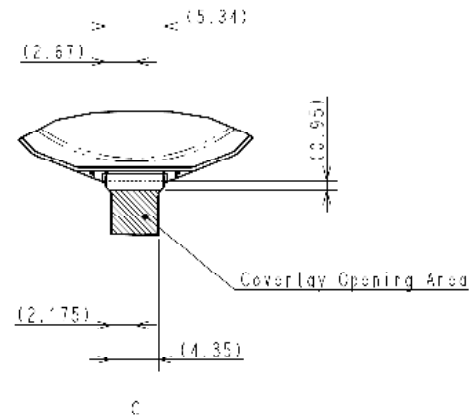
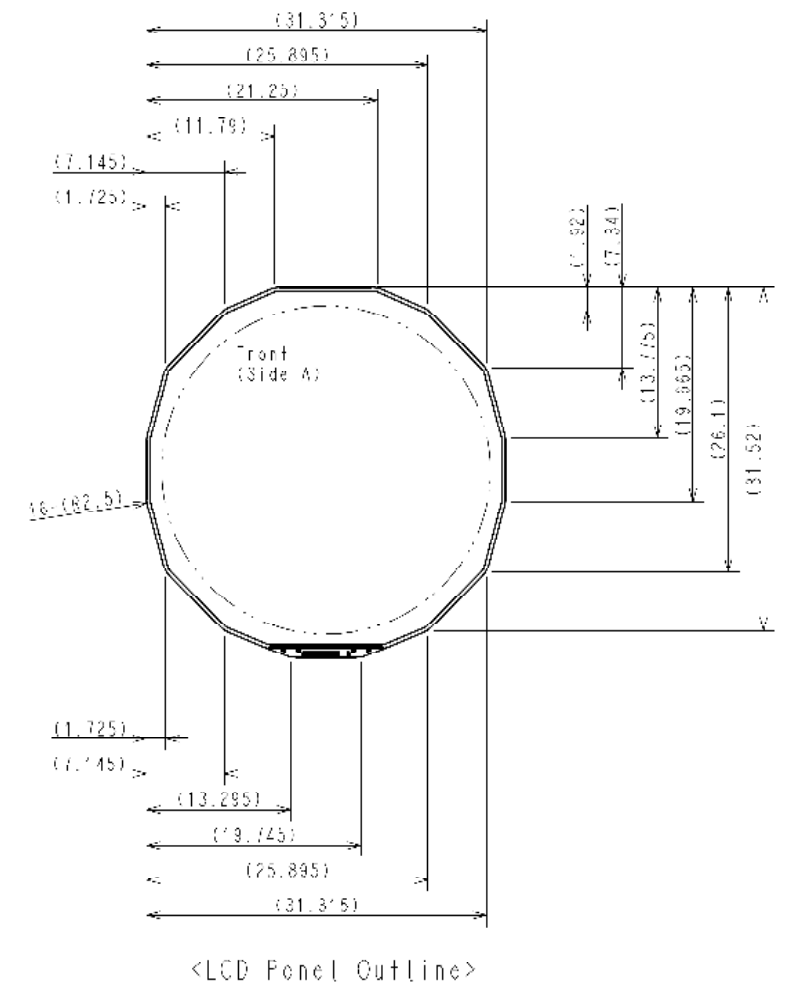
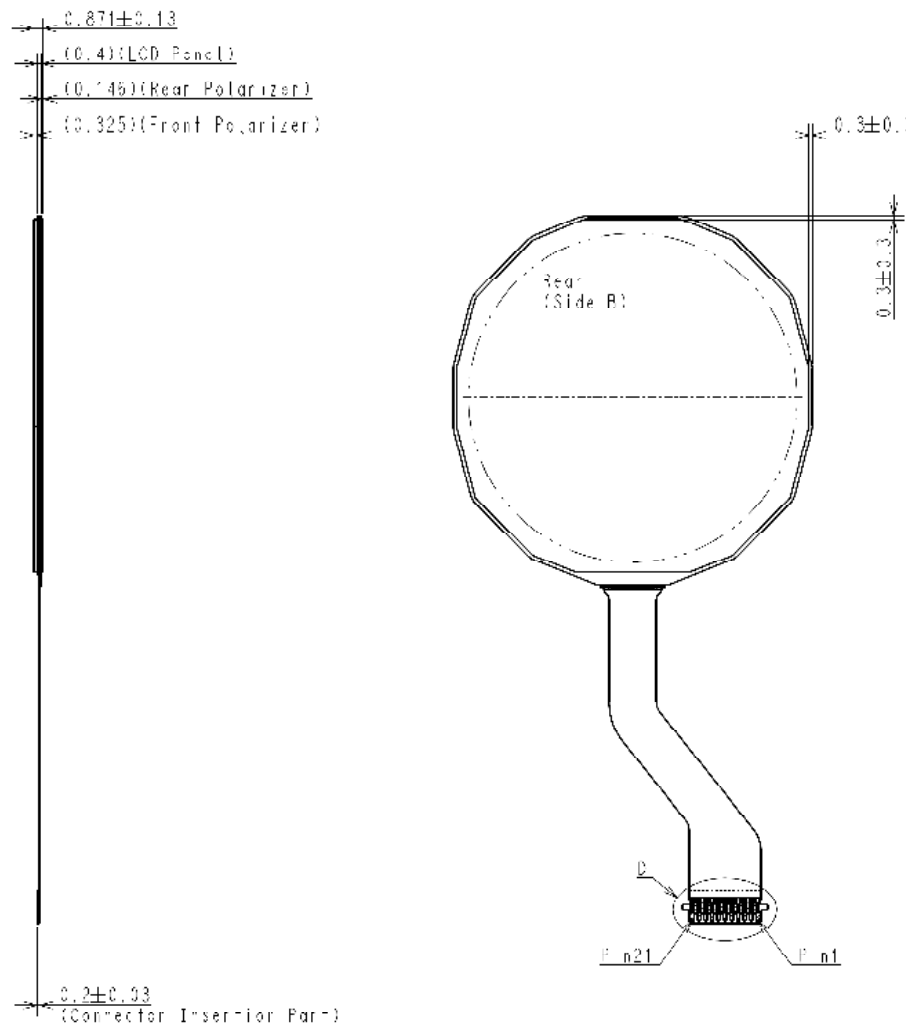
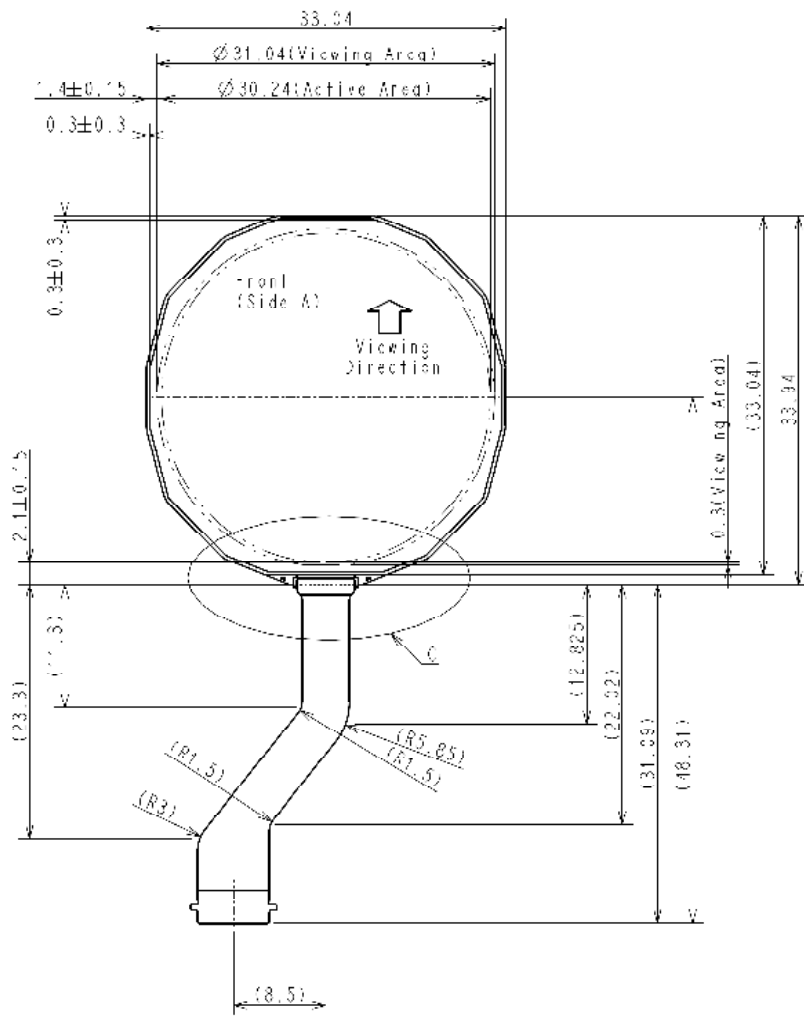
(1) When disposing LCD modules, consult company specialized in industrial waste treatment which is permitted by the government or local authority. When incineration is the method of LCD module disposal, law of environmental hygienic must be obeyed.

10.6 OTHERS

(1) This product is designed to be used in ordinary electronic devices. Do not use this product in other applications, especially in devices that may cause direct bodily damage to end users (such as aerospace equipment, traffic control equipment, medical equipment, life-support system equipment, or safety equipment).

(2) Japan Display Inc. shall not be responsible for defects that occur in this product or in equipment connected to this product if the product is used in an environment that exceeds the ranges specified in this document, or in an environment not described in this document.

·OUTLINE DRAWING



Note 1: Cosmetic imperfection will be allowed outside the Viewing Area.
 2: Viewing Direction is the angle to get best reflective performance.
 3: All dimensions are in millimeters (mm).
 4: Unless otherwise specified, tolerance shall be ±0.2.

Scale: A75

DATA MODUL



ALL TECHNOLOGIES. ALL COMPETENCIES. ONE SPECIALIST.



DATA MODUL AG
Landsberger Straße 322
DE-80687 Munich
Phone: +49-89-56017-0

DATA MODUL WEIKERSHEIM GMBH
Lindenstraße 8
DE-97990 Weikersheim
Phone: +49-7934-101-0



More information and worldwide locations can be found at

www.data-modul.com