



SPECIFICATION



TCG057VGLCAANN-GN20

5.7" - VGA - LVDS

Version:

Date: 19.02.2024

Note: This specification is subject to change without prior notice

www.data-modul.com

SPEC for Sample Production

Spec No.	TQ3C-8EAF0-E1YBD90-00
Date	February 19, 2024

TYPE : TCG057VGLCAANN-GN20

< 5.7 inch VGA transmissive color TFT with LED backlight
and constant current circuit for LED backlight >

CONTENTS

1. Application
2. Construction and outline
3. Mechanical specifications
4. Absolute maximum ratings
5. Electrical characteristics
6. Optical characteristics
7. Interface signals
8. Input timing characteristics
9. Lot number identification
10. Warranty
11. Precautions for use
12. Reliability test data
13. Outline drawing

KYOCERA CORPORATION

This specification is subject to change without notice.
Consult Kyocera before ordering.

Spec No.	Part No.	Page
TQ3C-8EAF0-E1YBD90-00	TCG057VGLCAANN-GN20	-

Warning

1. This Kyocera LCD module has been specifically designed for use only in electronic devices and industrial machines in the area of audio control, office automation, industrial control home appliances, etc. The module should not be used in applications where the highest level of safety and reliability are required and module failure or malfunction of such module results in physical harm or loss of life, as well as enormous damage or loss. Such fields of applications include, without limitation, medical, aerospace, communications infrastructure, atomic energy control. Kyocera expressly disclaims any and all liability resulting in any way to the use of the module in such applications.
2. Customer agrees to indemnify, defend and hold Kyocera harmless from and against any and all actions, claims, damages, liabilities, awards, costs, and expenses, including legal expenses, resulting from or arising out of Customer's use, or sale for use, or Kyocera modules in applications.

Caution

1. Kyocera shall have the right, which Customer hereby acknowledges, to immediately scrap or destroy tooling for Kyocera modules for which no Purchase Orders have been received from the Customer in a two-year period.
2. Please note that we may not be able to respond to new environmental regulations after receiving the final mass production order for this product.

Spec No. TQ3C-8EAF0-E1YBD90-00	Part No. TCG057VGLCAANN-GN20	Page -
-----------------------------------	---------------------------------	-----------

Revision record

Date		Designed by : Engineering dept.			Confirmed by :
		Prepared	Checked	Approved	QA dept. Approved
Rev.No.	Date	Page	Descriptions		

1. Application

This document defines the specification of TCG057VGLCAANN-GN20. (RoHS Compliant)

2. Construction and outline

LCD	: Transmissive color dot matrix type TFT
Backlight system	: LED
Polarizer	: Glare treatment
Interface	: LVDS
Additional circuit	: Timing controller, Power supply (3.3V input) (with constant current circuit for LED Backlight)

3. Mechanical specifications

Item	Specification	Unit
Outline dimensions	127.2 (W) × 100.4 (H) × 5.7 (D)	mm
Active area	115.2 (W) × 86.4 (H) (14.4cm / 5.7 inch (Diagonal))	mm
Dot format	640 × (B,G,R) (W) × 480 (H)	dot
Dot pitch	0.06 (W) × 0.18 (H)	mm
Base color	1) Normally White	-
Mass	110	g

- 1) Projection not included. Please refer to outline for details.
- 2) Due to the characteristics of the LCD material, the color varies with environmental temperature.

4. Absolute maximum ratings

4-1. Electrical absolute maximum ratings

Item		Symbol	Min.	Max.	Unit
Supply voltage(+3.3V)		V _{DD}	-0.3	4.0	V
Supply voltage(+5V)		V _{IN}	-0.3	6.0	V
Input signal voltage 1)	RxINi+, RxINi- 2)	V _{I1}	-0.3	V _{DD} +0.3	V
	CK IN+, CK IN-	V _{I2}	-0.3	V _{DD} +0.3	V
	SC	V _{I3}	-0.3	V _{DD} +0.3	V
	BLEN, BLPWM, VBRT	V _{I4}	-0.3	V _{IN} +0.3	V
LED OPEN Pin current		I _{OPLED}	0	100	mA

- 1) V_{DD} must be supplied correctly within the range described in 5-1.
- 2) i=0,1,2

4-2. Environmental absolute maximum ratings

Item	Symbol	Min.	Max.	Unit
Operating temperature 1)	T _{OP}	-20	70	°C
Storage temperature 2)	T _{STO}	-30	80	°C
Operating humidity 3)	H _{OP}	10	4)	%RH
Storage humidity 3)	H _{STO}	10	4)	%RH
Vibration	-	5)	5)	-
Shock	-	6)	6)	-

- 1) Operating temperature means a temperature which operation shall be guaranteed. Since display performance is evaluated at 25°C, another temperature range should be confirmed.
- 2) Ta (Ambient Temperature) = -30°C < 48h, Ta = 80°C < 168h
Store LCD panels at normal temperature/humidity. Keep them free from vibration and shock. An LCD panel that is kept at a low or a high temperature for a long time can be defective due to other conditions, even if the low or high temperature satisfies the standard.
(Please refer to "Precautions for Use" for details.)
- 3) Non-condensing
- 4) Ta ≤ 40°C, 85%RH Max.
Ta > 40°C, Absolute humidity shall be less than 85%RH at 40°C.
- 5)

Frequency	10~55 Hz	Acceleration value (0.3~9 m/s ²)
Vibration width	0.15mm	
Interval	10-55-10 Hz	1 minute

2 hours in each direction X, Y, Z (6 hours total)

EIAJ ED-2531

- 6) Acceleration: 490 m/s², Pulse width: 11 ms
3 times in each direction: ±X, ±Y, ±Z
EIAJ ED-2531

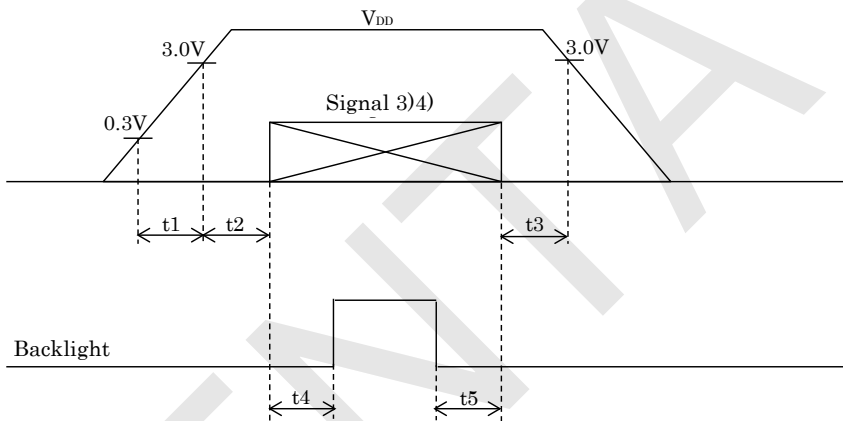
5. Electrical characteristics

5-1. LCD

Ta = -20~70°C

Item	Symbol	Condition	Min.	Typ.	Max.	Unit
Supply voltage for logic 1)	V _{DD}	—	3.0	3.3	3.6	V
Current consumption for logic	I _{DD}	2)	—	(180)	(235)	mA
Permissible input ripple voltage	V _{RP}	—	—	—	100	mVp
Input signal voltage 3)	V _{IL}	“Low” level	0	—	0.2V _{DD}	V
	V _{IH}	“High” level	0.8V _{DD}	—	V _{DD}	V
LVDS Input voltage 4)	V _{TL}	“Low” level	-0.1	—	—	V
	V _{TH}	“High” level	—	—	0.1	V
	V _{ID}	—	0.1	—	0.45	V
	V _{ICM}	—	0.15+ V _{ID} /2	—	2.25· V _{ID} /2	V
Terminal resistance	R ₁	—	—	100	—	Ω

1) V_{DD}-turn-on conditions



$$0 < t1 \leq 20\text{ms}$$

$$0 < t2 \leq 50\text{ms}$$

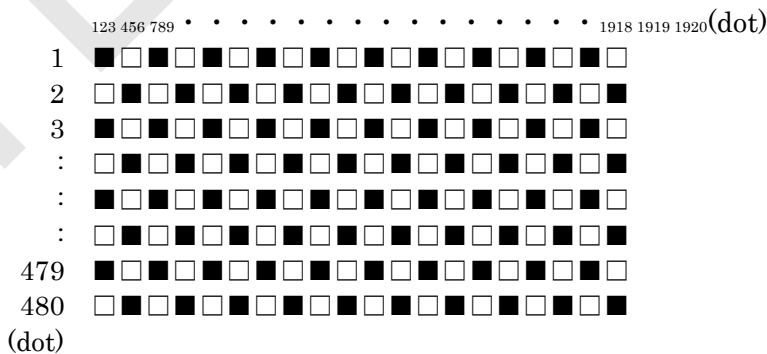
$$0 < t3 \leq 1\text{s}$$

$$25 \text{ frame refresh} \leq t4$$

$$0 \leq t5$$

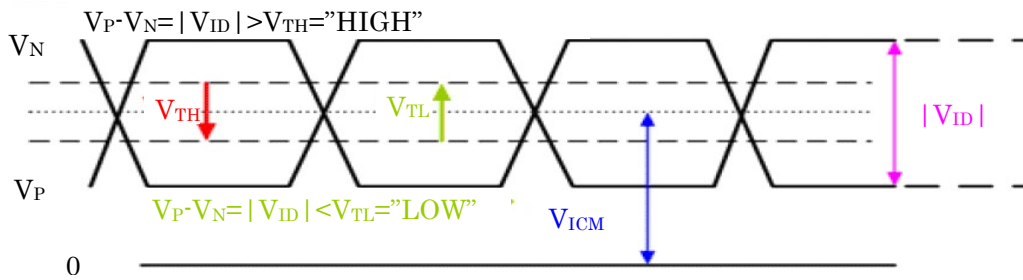
2) Display pattern:

V_{DD} = 3.3V, Ta = 25°C



3) Input signal : SC

4) Input signal : RxIN0-/+, RxIN1-/+, RxIN2-/+, CK IN-/+

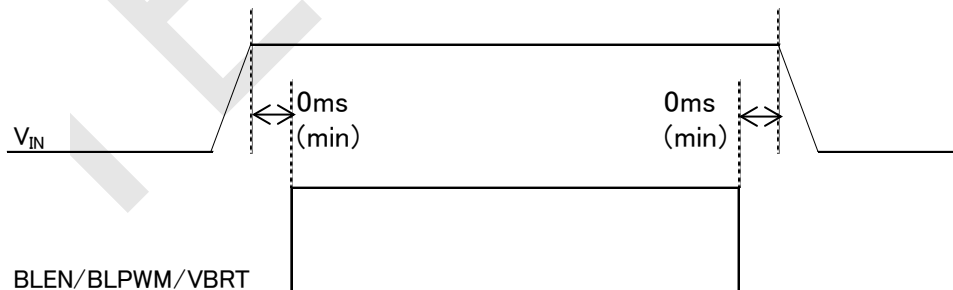


5-2. Constant current circuit for LED Backlight

Ta = -20~70°C

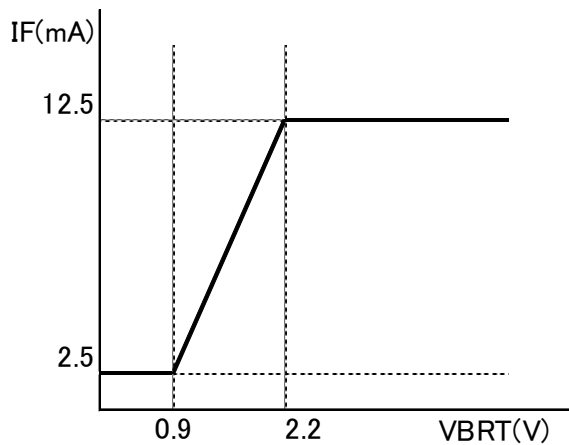
Item	Symbol	Condition	Min.	Typ.	Max.	Unit
Supply voltage 1)	V _{IN}	-	3.0	5.0	5.5	V
Current consumption	I _{IN}	2)	-	(300)	(400)	mA
BLEN Input signal voltage	V _{IL_BLEN}	Backlight OFF	0	-	0.8	V
	V _{IH_BLEN}	Backlight ON	2.3	-	V _{IN}	V
VBRT Input signal voltage	V _{IL_VBRT}	"Low" level	0	-	0.8	V
	V _{IH_VBRT}	"High" level	2.3	-	V _{IN}	V
VBRT "Low" level threshold	L th	3)	0.8	0.9	-	V
VBRT "High" level threshold	H th	3)	-	2.2	2.3	V
LED Forward current	I _F	VBRT: Low level	2.0	2.5	3.0	mA
		VBRT: High level	11.5	12.5	13.5	mA
BLPWM Input signal voltage	V _{IL_BLPWM}	Backlight OFF	0	-	0.8	V
	V _{IH_BLPWM}	Backlight ON	2.3	-	V _{IN}	V
PWM Frequency 4)	f _{PWM}	-	100	-	-	Hz
PWM Duty ratio 4)	D _{PWM}	PWM Ton	5	-	-	μs
Operating life time 5), 6)	T	Temp.=25°C	-	50,000	-	h

1) V_{IN}-turn-on conditions



2) V_{IN} = 5V, Ta = 25°C, VBRT=2.3V~, BLPWM = 100%

3) VBRT



Within the range of Typ. 0.9~2.2V, consecutive dimming is possible.

- 4) In case of lower frequency, the deterioration of the display quality, flicker etc., may occur.
- 5) When brightness decrease 50% of minimum brightness.
The average life of a LED will decrease when the LCD is operating at higher temperatures.
- 6) Life time is estimated data. (Condition: IF=12.5mA, Temp.=25°C in chamber).

5-3. LED open detection

Ta = -20~70°C

Item	Symbol	Condition	Min.	Typ.	Max.	Unit
BLPWM frequency of LED open detection	-	BLPWM Ton $\geq 5 \mu s$	100	-	-	Hz
BLPWM Ton of LED open detection	-	PWM Frequency $\geq 100\text{Hz}$	5.0	-	-	μs
LED open Sink current	I sink	-	-	-	100	mA
Leak current	I leak	-	-	-	1.0	mA
Recovery time from LED open state *	Rtime	-	-	-	1	s

* When abnormal condition is resolved in the middle of the operation, OPLED terminal return to normal operating condition from open detection condition within one second.

- 1) OPLED terminal detected abnormal state when LED forward current does not flow caused by opening more than one out of three LED lines or other failures.
- 2) OPLED terminal keeps FET's open drain inside the circuit, FET comes to turn on at abnormal state.
- 3) IF you use OPLED terminal, you must connect with outside terminal of voltage through pull-up resistance. At abnormal state, OPLED terminal threshold voltage changes from "H" level to "L" level.
- 4) LED open detecting function is effective at only working condition of LED driving circuit.
- 5) By driving PWM dimming, LED open detecting function comes to be effective under some conditions.
- 6) A small amount of current would appear at in-built FET's drain leakage at normal state.
- 7) LED driving circuit is unstable a period of 20ms from VIN and BLEN turning on, or to stop driving by BLEN off. Therefore, LED open detecting may occur malfunction.

6. Optical characteristics

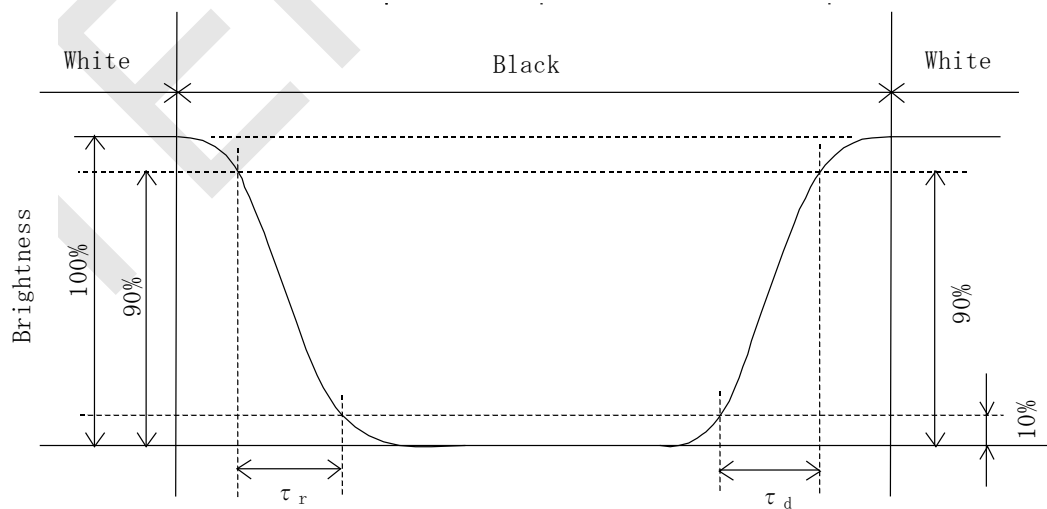
Measuring spot = ϕ 6.0mm, Ta = 25°C

Item	Symbol	Condition	Min.	Typ.	Max.	Unit	
Response time	Rise	τ_r	$\theta = \phi = 0^\circ$	-	10	-	ms
	Down	τ_d	$\theta = \phi = 0^\circ$	-	25	-	ms
Viewing angle range View direction : 6 o'clock (Gray inversion)	θ UPPER	CR \geq 5	-	80	-	deg.	
	θ LOWER		-	80	-		
	ϕ LEFT		-	80	-	deg.	
	ϕ RIGHT		-	80	-		
Contrast ratio	CR	$\theta = \phi = 0^\circ$	300	500	-	-	
Brightness	L	IF=12.5mA/Line	400	600	-	cd/m ²	
Chromaticity coordinates	Red	x	$\theta = \phi = 0^\circ$	0.56	0.61	0.66	-
		y		0.32	0.37	0.42	
	Green	x	$\theta = \phi = 0^\circ$	0.29	0.34	0.39	
		y		0.52	0.57	0.62	
	Blue	x	$\theta = \phi = 0^\circ$	0.09	0.14	0.19	
		y		0.06	0.11	0.16	
	White	x	$\theta = \phi = 0^\circ$	0.27	0.32	0.37	
		y		0.29	0.34	0.39	

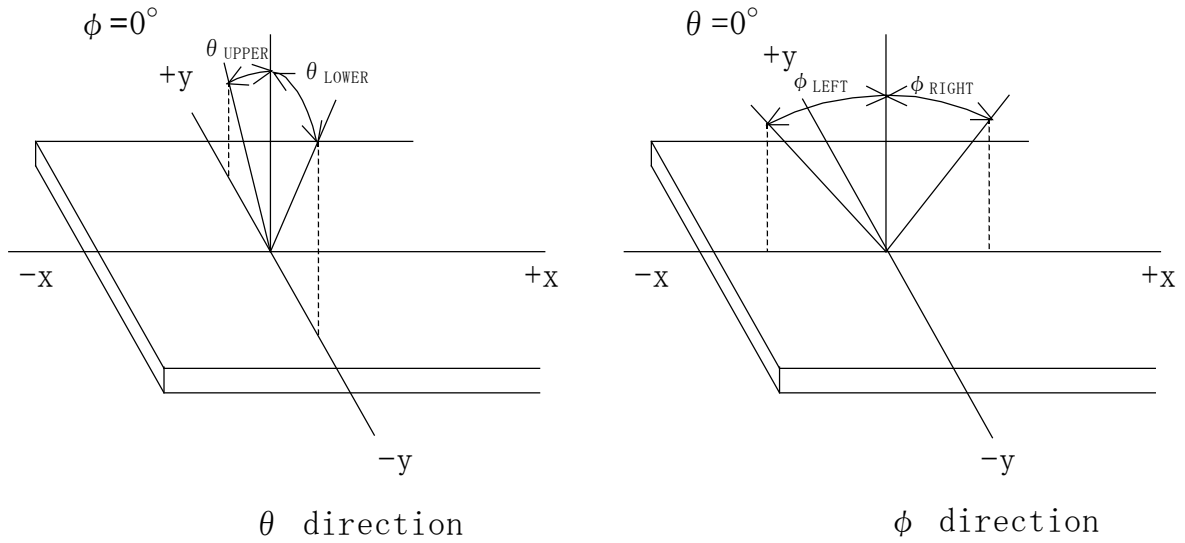
6-1. Definition of contrast ratio

$$CR(\text{Contrast ratio}) = \frac{\text{Brightness with all pixels "White"}}{\text{Brightness with all pixels "Black"}}$$

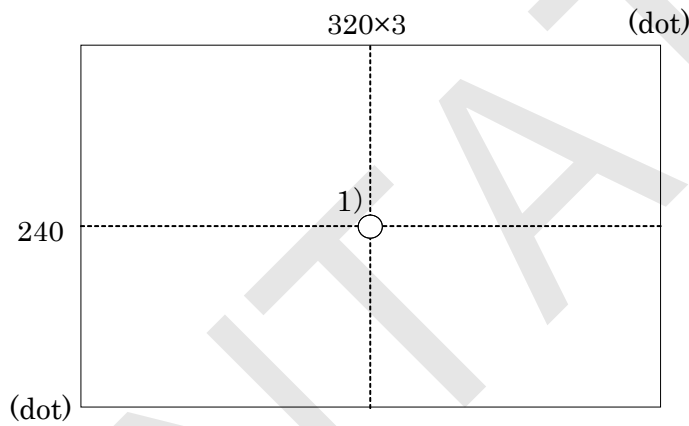
6-2. Definition of response time



6-3. Definition of viewing angle



6-4. Brightness measuring point



- 1) Rating is defined as the white brightness at center of display screen.
- 2) Measured 5 minutes after the LED is powered on. ($T_a = 25^\circ\text{C}$)

7. Interface signals

No.	Symbol	Description	I/O	Note
1	NC	No connect	-	
2	NC	No connect	-	
3	NC	No connect	-	
4	SC	Scan direction control(High or Open: Normal、GND: Reverse)	I	1)
5	RxIN0-	LVDS receiver signal CH0(-)	I	LVDS
6	RxIN0+	LVDS receiver signal CH0(+)	I	LVDS
7	GND	GND	-	
8	RxIN1-	LVDS receiver signal CH1(-)	I	LVDS
9	RxIN1+	LVDS receiver signal CH1(+)	I	LVDS
10	GND	GND	-	
11	RxIN2-	LVDS receiver signal CH2(-)	I	LVDS
12	RxIN2+	LVDS receiver signal CH2(+)	I	LVDS
13	GND	GND	-	
14	CK IN-	LVDS receiver signal CK(-)	I	LVDS
15	CK IN+	LVDS receiver signal CK(+)	I	LVDS
16	GND	GND	-	
17	NC	No connect	-	
18	NC	No connect	-	
19	GND	GND	-	
20	GND	GND	-	
21	V _{DD}	+3.3V power supply	-	
22	V _{DD}	+3.3V power supply	-	
23	OPLD	OPEN LED detection	-	
24	BLPWM	PWM signal (Brightness adjustment)	I	
25	BLN	ON/OFF terminal voltage	I	
26	VBRT	Analog dimming	I	
27	V _{IN}	+5.0V power supply	-	
28	V _{IN}	+5.0V power supply	-	
29	GNDB	GND (Backlight)	-	
30	GNDB	GND (Backlight)	-	

LCD connector : DF19G-30P-1H(52) (HIROSE)

Recommended matching connector : DF19G-30S-1C(06) (HIROSE)

1) SC Pin

① Open or High

② Low

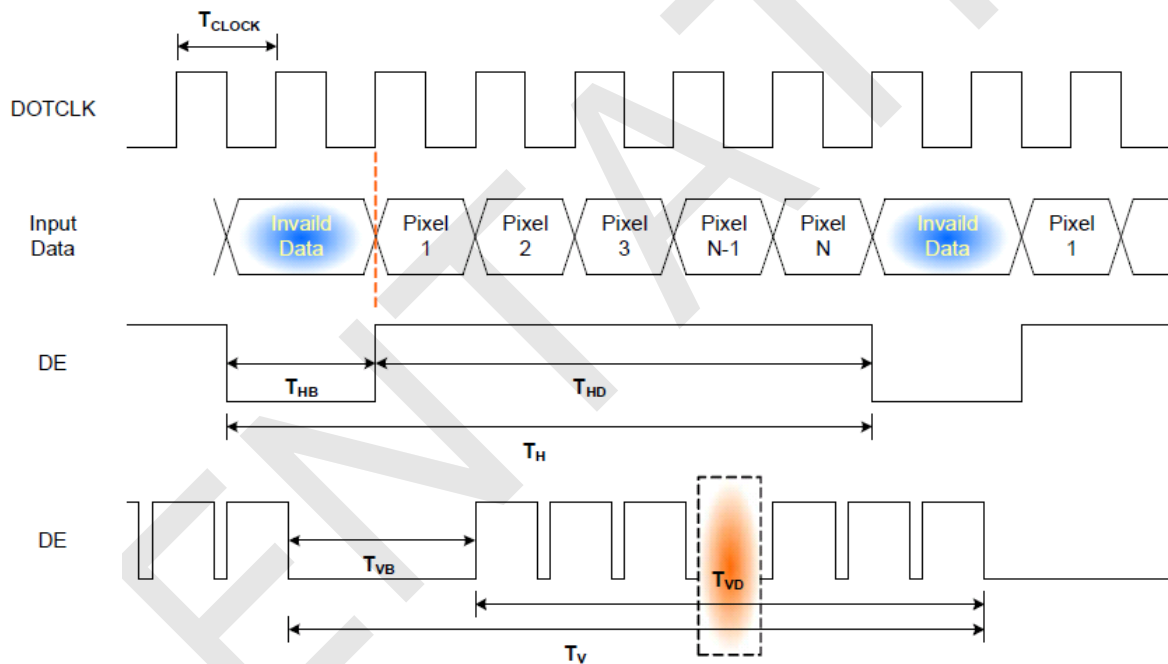


8. Input timing characteristics

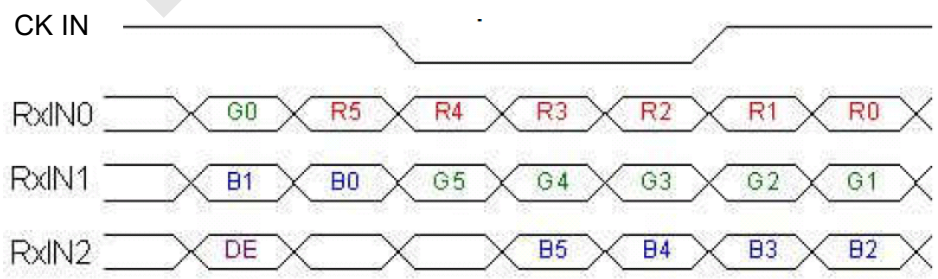
8-1. Timing characteristics 1)

Item		Symbol	Min.	Typ.	Max.	Unit
Clock (CK)	Frequency	$1/T_{\text{Clock}}$	20	25.2	28.33	MHz
Vertical	Period	T_V	520	525	560	T_H
	Display period	T_{VD}	-	480	-	
	Blank period	T_{VB}	40	45	80	
Horizontal	Period	T_H	770	800	900	T_{Clock}
	Display period	T_{HD}	-	640	-	
	Blank period	T_{HB}	130	160	260	

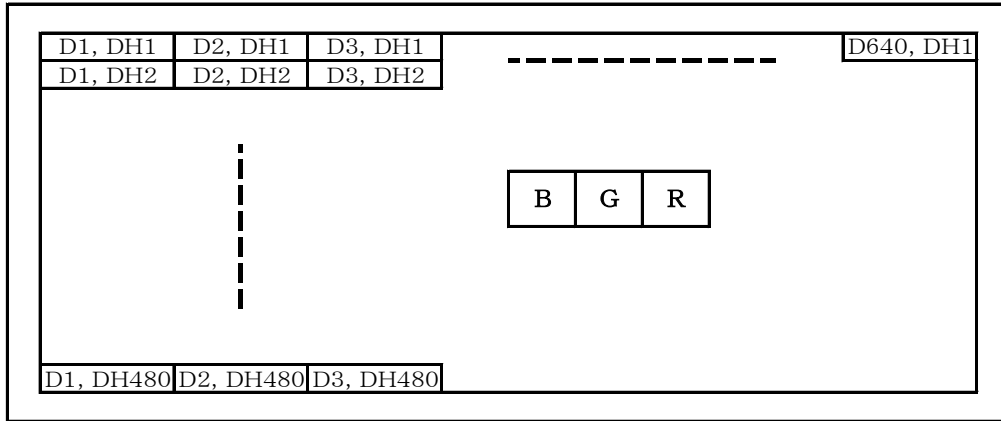
- 1) If the display is used under the condition which is out of specifications such as higher clock frequency than specified value, there is a possibility phenomenon such as display error including white display, malfunction and no image may occur. Please use the display under the conditions written in the specification.
- 2) Frame frequency 60Hz.



8-2. Data mapping



8-3. Input data signals and display position on the screen



CONFIDENTIAL

Spec No.	Part No.	Page
TQ3C-8EAF0-E1YBD90-00	TCG057VGLCAANN-GN20	12

11. Precautions for use

11-1. Installation of the LCD

- 1) A transparent protection plate shall be added to protect the LCD and its polarizer.
- 2) The LCD shall be installed so that there is no pressure on the LSI chips.
- 3) The LCD shall be installed flat, without twisting or bending.
- 4) A transparent protection sheet is attached to the polarizer. Please remove the protection film slowly before use, paying attention to static electricity.

11-2. Static electricity

- 1) Since CMOS ICs are mounted directly onto the LCD glass, protection from static electricity is required.
- 2) Workers should use body grounding. Operator should wear ground straps.

11-3. LCD operation

- 1) The LCD shall be operated within the limits specified. Operation at values outside of these limits may shorten life, and/or harm display images.

11-4. Storage

- 1) The LCD shall be stored within the temperature and humidity limits specified. Store in a dark area, and protect the LCD from direct sunlight or fluorescent light.
- 2) Always store the LCD so that it is free from external pressure onto it.

11-5. Usage

- 1) **DO NOT** store in a high humidity environment for extended periods. Polarizer degradation bubbles, and/or peeling off of the polarizer may result.
- 2) The front polarizer is easily scratched or damaged. Prevent touching it with any hard material, and from being pushed or rubbed.
- 3) The LCD screen may be cleaned by wiping the screen surface with a soft cloth or cotton pad using a little Ethanol.
- 4) Water may cause damage or discoloration of the polarizer. Clean condensation or moisture from any source immediately.
- 5) Always keep the LCD free from condensation during testing. Condensation may permanently spot or stain the polarizer.
- 6) Do not disassemble LCD module because it will result in damage.
- 7) This Kyocera LCD module has been specifically designed for use in general electronic devices, but not for use in a special environment such as usage in an active gas. Hence, when the LCD is supposed to be used in a special environment, evaluate the LCD thoroughly beforehand and do not expose the LCD to chemicals such as an active gas.
- 8) Please do not use solid-base image pattern for long hours because a temporary afterimage may appear. We recommend using screen saver etc. in cases where a solid-base image pattern must be used.
- 9) Liquid crystal may leak when the module is broken. Be careful not to let the fluid go into your eyes and mouth. In the case the fluid touches your body; rinse it off right away with water and soap.

12. Reliability test data

Test item	Test condition	Test time	Judgement
High temp. atmosphere	80°C	240h	TBD
Low temp. atmosphere	-30°C	240h	TBD
High temp. humidity atmosphere	40°C 90% RH	240h	TBD
Temp. cycle	-30°C 0.5h R.T. 0.5h 80°C 0.5h	10cycles	TBD
High temp. operation	70°C	500h	TBD

- 1) Each test item uses a test LCD only once. The tested LCD is not used in any other tests.
- 2) The LCD is tested in circumstances in which there is no condensation.
- 3) The reliability test is not an out-going inspection.
- 4) The result of the reliability test is for your reference purpose only.
The reliability test is conducted only to examine the LCD's capability.

Spec No.	TQ3C-8EAF0-E2YBD90-00
Date	February 19, 2024

KYOCERA INSPECTION STANDARD

TYPE : TCG057VGLCAANN-GN20

CONFIDENTIAL

KYOCERA CORPORATION

Spec No.
TQ3C-8EAF0-E2YBD90-00

Part No.
TCG057VGLCAANN-GN20

Page
-

Revision record

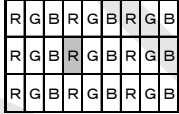
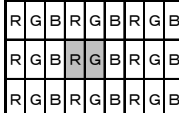
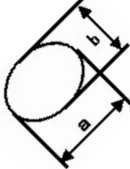
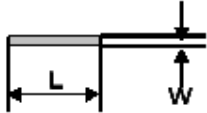
Date	Designed by : Engineering dept.			Confirmed by : QA dept.
	Prepared	Checked	Approved	Approved

Rev.No.	Date	Page	Descriptions

RENTAL

Visuals specification

1) Note

		Note	
General	<p>1. Customer identified anomalies not defined within this inspection standard shall be reviewed by Kyocera, and an additional standard shall be determined by mutual consent.</p> <p>2. This inspection standard about the image quality shall be applied to any defect within the active area and shall not be applicable to outside of the area.</p> <p>3. Inspection conditions</p> <p>Luminance : 500 Lux min.</p> <p>Inspection distance : 300 mm.</p> <p>Temperature : 25 ± 5°C</p> <p>Direction : Directly above</p>		
Definition of inspection item	Dot defect	Bright dot defect	<p>The dot is constantly “on” when power applied to the LCD, even when all “Black” data sent to the screen.</p> <p>Inspection tool: 5% Transparency neutral density filter.</p> <p>Count dot: If the dot is visible through the filter.</p> <p>Don't count dot: If the dot is not visible through the filter.</p>  <p>dot defect</p>
		Black dot defect	<p>The dot is constantly “off” when power applied to the LCD, even when all “White” data sent to the screen.</p> <p>Similar size compared to bright dot.</p>
		White dot (Circular/foreign particle)	<p>Pixel works electrically, however, circular/foreign particle makes dot appear to be “on” even when all “Black” data is sent to the screen.</p>
		Adjacent dot	<p>Adjacent dot defect is defined as two or more bright dot defects or black dot defects.</p>  <p>dot defect</p>
	External inspection	Bubble, Scratch, Foreign particle (Polarizer, Cell, Backlight)	Visible operating (all pixels “Black” or “White”) and non operating.
		Appearance inspection	Does not satisfy the value at the spec.
	Definition of size	<p>Definition of circle size</p>  <p>a: major axis, b: minor axis</p> <p>$d = (a + b) / 2$</p>	<p>Definition of linear size</p> 

2) Standard

Classification		Inspection item		Judgement standard				
Defect (in LCD glass)	Single dot	Bright dot defect		Acceptable number	: 4			
		Bright dot spacing		: 5 mm or more				
	Adjacent dot	2 dots	Bright dot defect	Acceptable number	: 5			
			Black dot defect	: 5 mm or more				
		3 or more dots		Acceptable number	: 0			
	Total dot defects		Acceptable number		: 5 Max			
	Others	White dot, Dark dot (Circle)		Size (mm)		Acceptable number		
$d \leq 0.2$				(Neglected)				
$0.2 < d \leq 0.4$				5				
$0.4 < d \leq 0.5$				3				
$0.5 < d$				0				
External inspection (Defect on Polarizer or between Polarizer and LCD glass)	Polarizer (Scratch)		Width (mm)		Length (mm)		Acceptable number	
			$W \leq 0.1$		-		(Neglected)	
			$0.1 < W \leq 0.3$		$L \leq 5.0$		(Neglected)	
					$5.0 < L$		0	
	$0.3 < W$		-		0			
	Polarizer (Bubble)		Size (mm)		Acceptable number			
			$d \leq 0.2$		(Neglected)			
			$0.2 < d \leq 0.3$		5			
			$0.3 < d \leq 0.5$		3			
	$0.5 < d$		0					
	Foreign particle (Circular shape)		Size (mm)		Acceptable number			
			$d \leq 0.2$		(Neglected)			
			$0.2 < d \leq 0.4$		5			
			$0.4 < d \leq 0.5$		3			
	$0.5 < d$		0					
	Foreign particle (Linear shape) Scratch		Width (mm)		Length (mm)		Acceptable number	
$W \leq 0.03$			-		(Neglected)			
$0.03 < W \leq 0.1$			$L \leq 2.0$		(Neglected)			
			$2.0 < L \leq 4.0$		3			
$4.0 < L$		-		0				
$0.1 < W$		-		(According to circular shape)				
Color variation (Mura)		Not to be significantly visible. Consultation shall be held as necessary.						



ALL TECHNOLOGIES. ALL COMPETENCIES. ONE SPECIALIST.



DATA MODUL AG
Landsberger Straße 322
DE-80687 Munich
Phone: +49-89-56017-0

DATA MODUL WEIKERSHEIM GMBH
Lindenstraße 8
DE-97990 Weikersheim
Phone: +49-7934-101-0



More information and worldwide locations can be found at

www.data-modul.com