



SPECIFICATION

KOE
JDI Group

TX17D02VM2CPA

6.5" TFT - VGA - LVDS

Version: TX17D02VM2CPA-5

Date: 08.12.2016

Note: This specification is subject to change without prior notice

KOE

JDI Group

Kaohsiung Opto-Electronics Inc.

FOR MESSRS : _____

DATE : Dec. 8th ,2016

CUSTOMER'S ACCEPTANCE SPECIFICATIONS

TX17D02VM2CPA

Contents



| No. | ITEM | SHEET No. | PAGE |
|-----|----------------------------|-----------------------------|------------|
| 1 | COVER | 7B64PS 2701-TX17D02VM2CPA-5 | 1-1/1 |
| 2 | RECORD OF REVISION | 7B64PS 2702-TX17D02VM2CPA-5 | 2-1/2~2/2 |
| 3 | GENERAL DATA | 7B64PS 2703-TX17D02VM2CPA-5 | 3-1/1 |
| 4 | ABSOLUTE MAXIMUM RATINGS | 7B64PS 2704-TX17D02VM2CPA-5 | 4-1/1 |
| 5 | ELECTRICAL CHARACTERISTICS | 7B64PS 2705-TX17D02VM2CPA-5 | 5-1/2~2/2 |
| 6 | OPTICAL CHARACTERISTICS | 7B64PS 2706-TX17D02VM2CPA-5 | 6-1/2~2/2 |
| 7 | BLOCK DIAGRAM | 7B64PS 2707-TX17D02VM2CPA-5 | 7-1/1 |
| 8 | RELIABILITY TESTS | 7B64PS 2708-TX17D02VM2CPA-5 | 8-1/1 |
| 9 | LCD INTERFACE | 7B64PS 2709-TX17D02VM2CPA-5 | 9-1/7~7/7 |
| 10 | OUTLINE DIMENSIONS | 7B64PS 2710-TX17D02VM2CPA-5 | 10-1/2~2/2 |
| 11 | TOUCH PANEL | 7B64PS 2711-TX17D02VM2CPA-5 | 11-1/2~2/2 |
| 12 | APPEARANCE STANDARD | 7B64PS 2712-TX17D02VM2CPA-5 | 12-1/4~4/4 |
| 13 | PRECAUTIONS | 7B64PS 2713-TX17D02VM2CPA-5 | 13-1/2~2/2 |
| 14 | DESIGNATION OF LOT MARK | 7B64PS 2714-TX17D02VM2CPA-5 | 14-1/1 |

ACCEPTED BY : _____

PROPOSED BY : Oblack Tsai

| | | | | |
|---------------------------------|-----------|-----------------------------|------|-------|
| KAOHSIUNG OPTO-ELECTRONICS INC. | SHEET NO. | 7B64PS 2701-TX17D02VM2CPA-5 | PAGE | 1-1/1 |
|---------------------------------|-----------|-----------------------------|------|-------|

2. RECORD OF REVISION

| DATE | SHEET No. | SUMMARY | | | | | | | | | | | | | | |
|--|---|---|------|--------|------|---------|------|----------------------|-----|-----|-------------------------|----------|------|----------------------|-----|-----|
| May 01,'12 | All pages | Company name changed: KAOHSIUNG HITACHI ELECTRONICS CO.,LTD. <div>↓</div> KAOHSIUNG OPTO-ELECTRONICS INC. | | | | | | | | | | | | | | |
| | 7B64PS-2704-TX17D02VM2CPA-2 Page 4-1/1 | 4. ABSOLUTE MAXIMUM RATINGS Revised : Note2. | | | | | | | | | | | | | | |
| | 7B64PS-2711-TX17D02VM2CPA-2 Page 11-2/2 | 11.5 SAFETY AND ATTENTIONS Added : Item 4) | | | | | | | | | | | | | | |
| Jun. 08,'12 | 7B64PS-2703-TX17D02VM2CPA-3 Page 3-1/1 | 3.1 DISPLAY FEATURES Revised : Power Consumption : 0.48 W for LCD → 0.64 W for LCD | | | | | | | | | | | | | | |
| | 7B64PS-2705-TX17D02VM2CPA-3 Page 5-1/2 | 5.1 LCD CHARACTERISTICS Revised : <table><tr><td>Item</td><td>Typ.</td><td>Max.</td></tr><tr><td>Power Supply Current</td><td>145</td><td>174</td></tr></table> <div>↓</div> <table><tr><td>Item</td><td>Typ.</td><td>Max.</td></tr><tr><td>Power Supply Current</td><td>193</td><td>231</td></tr></table> | | | Item | Typ. | Max. | Power Supply Current | 145 | 174 | Item | Typ. | Max. | Power Supply Current | 193 | 231 |
| | Item | Typ. | Max. | | | | | | | | | | | | | |
| Power Supply Current | 145 | 174 | | | | | | | | | | | | | | |
| Item | Typ. | Max. | | | | | | | | | | | | | | |
| Power Supply Current | 193 | 231 | | | | | | | | | | | | | | |
| 7B64PS-2714-TX17D02VM2CPA-3 Page 14-1/1 | 14. DESIGNATION of LOT MARK Added : <table><tr><td>REV.No</td><td>ITEM</td><td>REMARKS</td></tr><tr><td>-</td><td>-</td><td>-</td></tr><tr><td>A</td><td>DC/DC converter changed</td><td>PCN 0850</td></tr></table> Revised : <div><div><div></div><div><div>TX17D02VM2CPA</div><div>9044T (5D)</div><div>KOE</div></div><div><div>REV: 005373</div><div>MADE IN TAIWAN</div></div></div><div>↓</div><div><div></div><div><div>TX17D02VM2CPA</div><div>9044T (5E)</div><div>KOE</div></div><div><div>REV: A 005373</div><div>MADE IN TAIWAN</div></div></div></div> | | | REV.No | ITEM | REMARKS | - | - | - | A | DC/DC converter changed | PCN 0850 | | | | |
| REV.No | ITEM | REMARKS | | | | | | | | | | | | | | |
| - | - | - | | | | | | | | | | | | | | |
| A | DC/DC converter changed | PCN 0850 | | | | | | | | | | | | | | |

| DATE | SHEET No. | SUMMARY | | | | | | | | | | | | | | | | |
|--------------------|--|--|------|--|---------------|--------------------|--------|------------------|--------|------------------|------|--|---------------|--------------------|--------|-------------------|--------|------------------|
| Jan. 07,'13 | 7B64PS-2711- TX17D01VM2CPA-5 Page 11-1/2~2/2 | 11.2 ELECTRICAL CHARACTERISTICS Changed: X-axis: 270~830 Ω → 320~980 Ω Note1:Test force 120 gf → 150 gf 11.4 OPTICAL CHARACTERISTICS Changed: Transmittance: 80%→77% | | | | | | | | | | | | | | | | |
| Dec.8,'16 | 7B64PS-2711- TX17D01VM2CPA-6 Page 11-1/2~2/2 | 11.2 ELECTRICAL CHARACTERISTICS Revised : <table border="1"> <tr> <th colspan="2">Item</th><th>Specification</th></tr> <tr> <td rowspan="2">Circuit resistance</td><td>X-axis</td><td>320~980Ω</td></tr> <tr> <td>Y-axis</td><td>250~690Ω</td></tr> </table> <p style="text-align: center;">↓</p> <table border="1"> <tr> <th colspan="2">Item</th><th>Specification</th></tr> <tr> <td rowspan="2">Circuit resistance</td><td>X-axis</td><td>300~1100 Ω</td></tr> <tr> <td>Y-axis</td><td>100~800 Ω</td></tr> </table> 11.3 MECHANICAL CHARACTERISTICS Revised : Surface Hardness JIS K 5400 → JIS K5600-5-4 | Item | | Specification | Circuit resistance | X-axis | 320~980 Ω | Y-axis | 250~690 Ω | Item | | Specification | Circuit resistance | X-axis | 300~1100 Ω | Y-axis | 100~800 Ω |
| Item | | Specification | | | | | | | | | | | | | | | | |
| Circuit resistance | X-axis | 320~980 Ω | | | | | | | | | | | | | | | | |
| | Y-axis | 250~690 Ω | | | | | | | | | | | | | | | | |
| Item | | Specification | | | | | | | | | | | | | | | | |
| Circuit resistance | X-axis | 300~1100 Ω | | | | | | | | | | | | | | | | |
| | Y-axis | 100~800 Ω | | | | | | | | | | | | | | | | |
| | | | | | | | | | | | | | | | | | | |

3. GENERAL DATA

3.1 DISPLAY FEATURES

This module is a 6.5" VGA of 4:3 format amorphous silicon TFT. The pixel format is vertical stripe and sub pixels are arranged as R (red), G (green), B (blue) sequentially. This display is RoHS compliant, COG (chip on glass) technology and LED backlight are applied on this display.

| | |
|-------------------------|--|
| Part Name | TX17D02VM2CPA |
| Module Dimensions | 153.0(W) mm x 118.0(H) mm x 10.2(D) mm typ. |
| LCD Active Area | 132.48(W) mm x 99.36(H) mm |
| Pixel Pitch | 0.207(W) mm x 0.207(H) mm |
| Resolution | 640 x 3(RGB)(W) x 480(H) dots |
| Color Pixel Arrangement | R, G, B Vertical stripe |
| LCD Type | Transmissive Color TFT; Normally White |
| Display Type | Active Matrix |
| Number of Colors | 262k Colors |
| Backlight | LED (Lifetime: 70 Khr) |
| Weight | 240g typ. |
| Interface | LVDS; 20 pins |
| Power Supply Voltage | 3.3V for LCD; 12V for Backlight |
| Power Consumption | 0.64W for LCD; 4.08W for backlight |
| Viewing Direction | 12 O'clock (without image inversion and least brightness change) 6 O'clock (contrast peak located at) |
| Touch Panel | Resistive type; Film on Glass; 4-wire type; Antiglare surface |

4. ABSOLUTE MAXIMUM RATINGS

| Item | Symbol | Min. | Max. | Unit | Remarks |
|-------------------------|------------------|------|---------|------|---------|
| Supply Voltage | V _{DD} | -0.3 | 5.0 | V | - |
| Input Voltage of Logic | V _I | -0.2 | VDD+0.3 | V | Note 1 |
| Operating Temperature | T _{op} | -20 | 70 | °C | Note 2 |
| Storage Temperature | T _{st} | -30 | 80 | °C | Note 2 |
| Backlight Input Voltage | V _{LED} | - | 15 | V | - |

Note 1: The rating is defined for the signal voltages of the interface such as CLK and pixel data pairs.

Note 2: The maximum rating is defined as above based on the chamber temperature, which might be different from ambient temperature after assembling the panel into the application. Moreover, some temperature-related phenomenon as below needed to be noticed:

- Background color, contrast and response time would be different in temperatures other than 25°C.
- Operating under high temperature will shorten LED lifetime.

5. ELECTRICAL CHARACTERISTICS

5.1 LCD CHARACTERISTICS

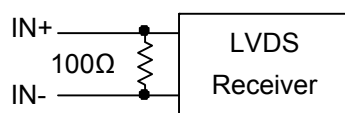
$T_a = 25\text{ }^{\circ}\text{C}$, $V_{SS} = 0\text{V}$

| Item | Symbol | Condition | Min. | Typ. | Max. | Unit | Remarks |
|--|-----------|-----------------------------|-------|------|------|------|----------|
| Power Supply Voltage | V_{DD} | - | 3.0 | 3.3 | 3.6 | V | - |
| Differential Input Voltage for LVDS Receiver Threshold | V_I | V_{IH} | - | - | +100 | mV | Note 1 |
| | | V_{IL} | -100 | - | - | | |
| Power Supply Current | I_{DD} | $V_{DD}-V_{SS}=3.3\text{V}$ | - | 193 | 231 | mA | Note 2,3 |
| Vsync Frequency | f_v | - | - | 60 | 66 | Hz | Note 4 |
| Hsync Frequency | f_H | - | 29.72 | 31.5 | 34.2 | KHz | |
| DCLK Frequency | f_{CLK} | - | 22.29 | 25.2 | 34.2 | MHz | |

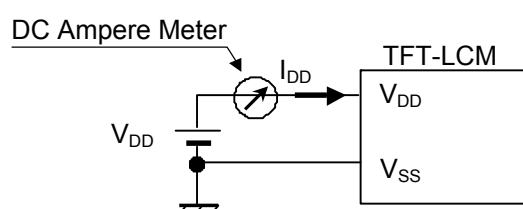
Note 1: $V_{CM}=+1.2\text{V}$

V_{CM} is common mode voltage of LVDS transmitter/receiver.

The input terminal of LVDS transmitter is terminated with 100Ω .



Note 2: An all black check pattern is used when measuring I_{DD} , f_v is set to 60Hz.



Note 3: 1.0A fuse is applied in the module for I_{DD} . For display activation and protection purpose, power supply is recommended larger than 2.5A to start the display and break fuse once any short circuit occurred.

Note 4: For LVDS transmitter input.

$$T_a = 25\text{ }^{\circ}\text{C}$$

| Item | Symbol | Condition | Min. | Typ. | Max. | Unit | Remarks |
|--------------------------------------|------------------|-------------------|------|------|------|------|---------|
| LED Input Voltage | V _{LED} | - | 11.7 | 12 | 12.3 | V | Note1 |
| LED Forward Current (Dim Control) | ILED | 0V; 0% duty | 320 | 340 | 360 | mA | Note 2 |
| | | 3.3VDC; 100% duty | 24 | 30 | 36 | | |
| LED lifetime | - | 340 mA | - | 70K | - | hrs | Note 3 |

Note 1: As Fig. 5.1 shown, LED current is constant, 340 mA, controlled by the LED driver when applying 12V V_{LED} .

Note 2: Dimming function can be obtained by applying DC voltage or PWM signal from the display interface CN1. The recommended PWM signal is 1K ~ 10K Hz with 3.3V amplitude.

Note 3: The estimated lifetime is specified as the time to reduce 50% brightness by applying 340 mA at 25°C.

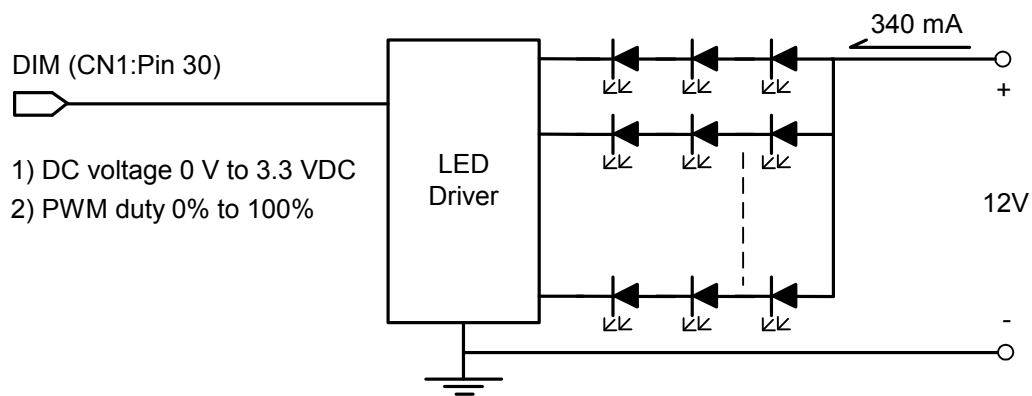


Fig 5.1

6. OPTICAL CHARACTERISTICS

The optical characteristics are measured based on the conditions as below:

- Supplying the signals and voltages defined in the section of electrical characteristics.
- The backlight unit needs to be turned on for 30 minutes.
- The ambient temperature is 25°C.
- In the dark room around 500~1000 lx, the equipment has been set for the measurements as shown in Fig 6.1.

$$T_a = 25^{\circ}\text{C}, f_v = 60\text{ Hz}, VDD = 3.3V$$

| Item | | Symbol | Condition | Min. | Typ. | Max. | Unit | Remarks |
|-------------------------------------|-------|---------------------------------|--|------|------|------|-------------------|---------|
| Brightness of White | | - | $\phi = 0^{\circ}, \theta = 0^{\circ}$, ILED= 340 mA | 380 | 480 | - | cd/m ² | Note 1 |
| Brightness Uniformity | | - | | 70 | - | - | % | Note 2 |
| Contrast Ratio | | CR | | 300 | 600 | - | - | Note 3 |
| Response Time (Rising + Falling) | | T _r + T _f | $\phi = 0^{\circ}, \theta = 0^{\circ}$ | - | 30 | - | ms | Note 4 |
| NTSC Ratio | | - | $\phi = 0^{\circ}, \theta = 0^{\circ}$ | - | 50 | - | % | - |
| Viewing Angle | | θ_x | $\phi = 0^{\circ}, CR \geq 10$ | 70 | 80 | - | Degree | Note 5 |
| | | $\theta_{x'}$ | $\phi = 180^{\circ}, CR \geq 10$ | 70 | 80 | - | | |
| | | θ_y | $\phi = 90^{\circ}, CR \geq 10$ | 50 | 60 | - | | |
| | | $\theta_{y'}$ | $\phi = 270^{\circ}, CR \geq 10$ | 70 | 80 | - | | |
| Color Chromaticity | Red | X | $\phi = 0^{\circ}, \theta = 0^{\circ}$ | 0.52 | 0.57 | 0.62 | - | Note 6 |
| | | Y | | 0.30 | 0.35 | 0.40 | | |
| | Green | X | | 0.29 | 0.34 | 0.39 | | |
| | | Y | | 0.50 | 0.55 | 0.60 | | |
| | Blue | X | | 0.09 | 0.14 | 0.19 | | |
| | | Y | | 0.06 | 0.11 | 0.16 | | |
| | White | X | | 0.25 | 0.30 | 0.35 | | |
| | | Y | | 0.26 | 0.31 | 0.36 | | |

Note 1: The brightness is measured from center point of the panel, P5 in Fig. 6.2, for the typical value.

Note 2: The brightness uniformity is calculated by the equation as below:

$$\text{Brightness uniformity} = \frac{\text{Min. Brightness}}{\text{Max. Brightness}} \times 100\%$$

, which is based on the brightness values of the 9 points measured by BM-5 as shown in Fig. 6.2.

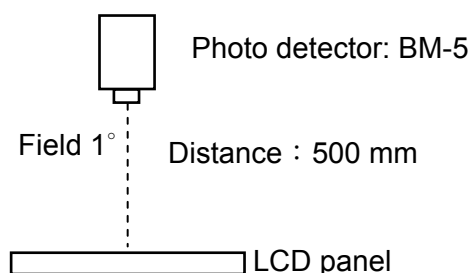


Fig. 6.1

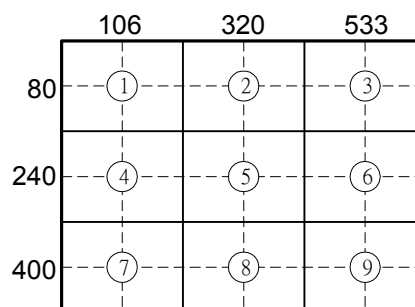


Fig. 6.2

Note 3: The Contrast ratio is measured from the center point of the panel, P5, and defined as the following equation:

$$CR = \frac{\text{Brightness of White}}{\text{Brightness of Black}}$$

Note 4: The definition of response time is shown in Fig. 6.3. The rising time is the period from 90% brightness to 10% brightness when the data is from white to black. Oppositely, falling time is the period from 10% brightness rising to 90% brightness.

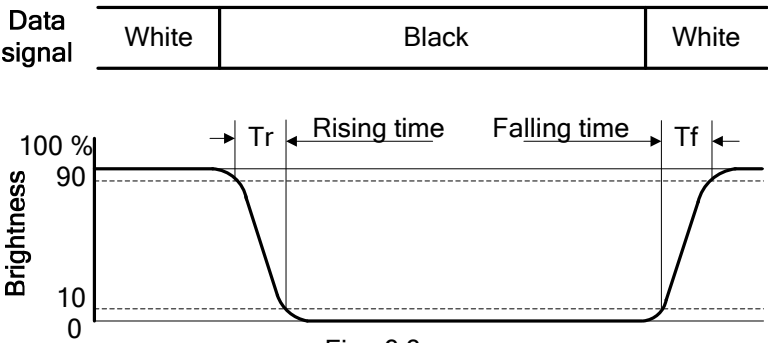


Fig . 6.3

Note 5: The definition of viewing angle is shown in Fig. 6.4. Angle ϕ is used to represent viewing directions, for instance, $\phi = 270^\circ$ means 6 o'clock, and $\phi = 0^\circ$ means 3 o'clock. Moreover, angle θ is used to represent viewing angles from axis Z toward plane XY.

The viewing direction of this display is 12 o'clock, which means that a photograph with gray scale would not be reversed in color and the brightness change would be less from this direction. However, the best contrast peak would be located at 6 o'clock.

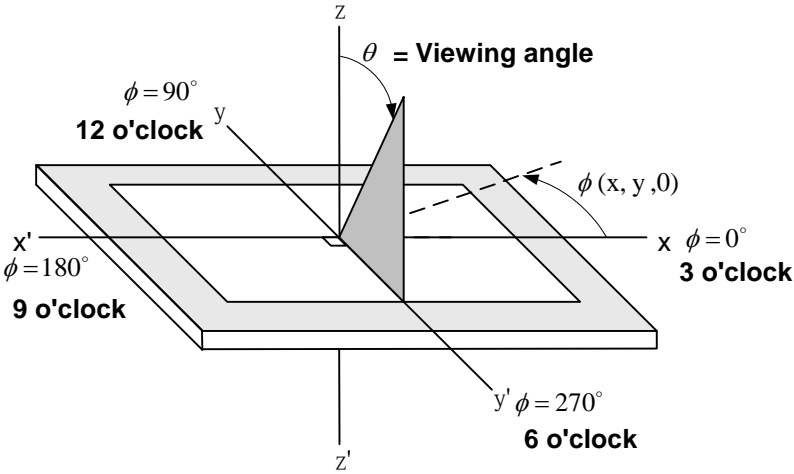
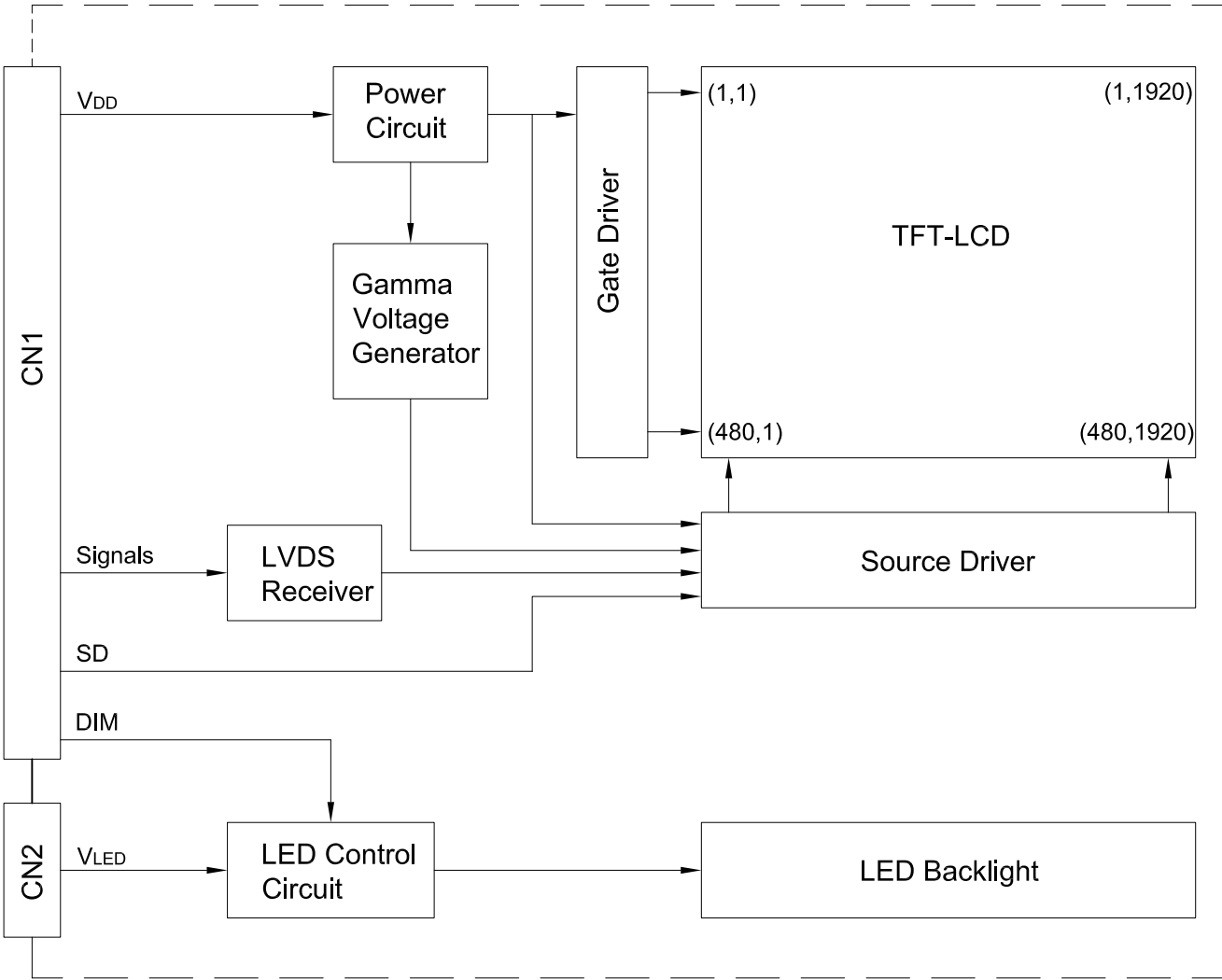


Fig. 6.4

Note 6: The color chromaticity is measured from the center point of the panel, P5, as shown in Fig. 6.2.

7. BLOCK DIAGRAM



Note: Signals are CLK, and pixel data pairs.

8. RELIABILITY TESTS

| Test Item | Condition | |
|-----------------------------|---|---|
| High Temperature | 1) Operating 2) 70 °C | 240 hrs |
| Low Temperature | 1) Operating 2) -20 °C | 240 hrs |
| High Temperature | 1) Storage 2) 80 °C | 240 hrs |
| Low Temperature | 1) Storage 2) -30 °C | 240 hrs |
| Heat Cycle | 1) Operating 2) -20 °C ~70 °C 3) 3hrs~1hr~3hrs | 240 hrs |
| Thermal Shock | 1) Non-Operating 2) -35 °C ↔ 85 °C 3) 0.5 hr ↔ 0.5 hr | 240 hrs |
| High Temperature & Humidity | 1) Operating 2) 40 °C & 85%RH 3) Without condensation (Note4) | 240 hrs |
| Vibration | 1) Non-Operating 2) 20~200 Hz 3) 2G 4) X, Y, and Z directions | 1 hr for each direction |
| Mechanical Shock | 1) Non-Operating 2) 10 ms 3) 50G 4) ±X, ±Y and ±Z directions | Once for each direction |
| ESD | 1) Operating 2) Tip: 200 pF, 250 Ω 3) Air discharge for glass: ±8KV 4) Contact discharge for metal frame: ±8KV | 1) Glass: 9 points 2) Metal frame: 8 points (Note3) |

Note 1: Display functionalities are inspected under the conditions defined in the specification after the reliability tests.

Note 2: The display is not guaranteed for use in corrosive gas environments.

Note 3: All pins of LCD interface (CN1) have been tested by ±100V contact discharge of ESD under non-operating condition.

Note 4: Under the condition of high temperature & humidity, if the temperature is higher than 40°C, the humidity needs to be reduced as Fig. 8.1 shown.

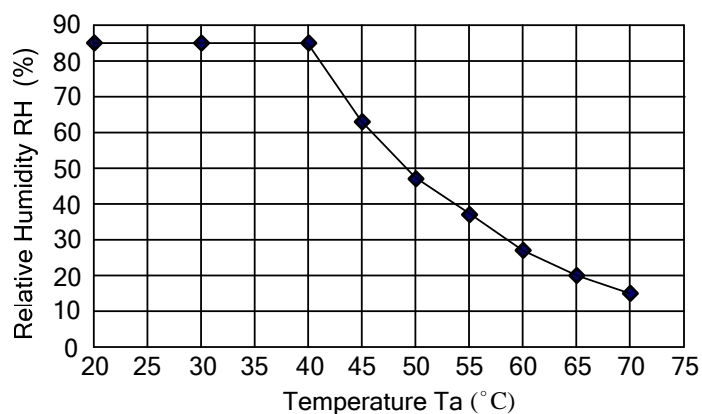


Fig. 8.1

9. LCD INTERFACE

9.1 INTERFACE PIN CONNECTIONS

The display interface connector (CN1) is FI-SEB20P-HF13E-E1500 made by JAE and pin assignment is as below:

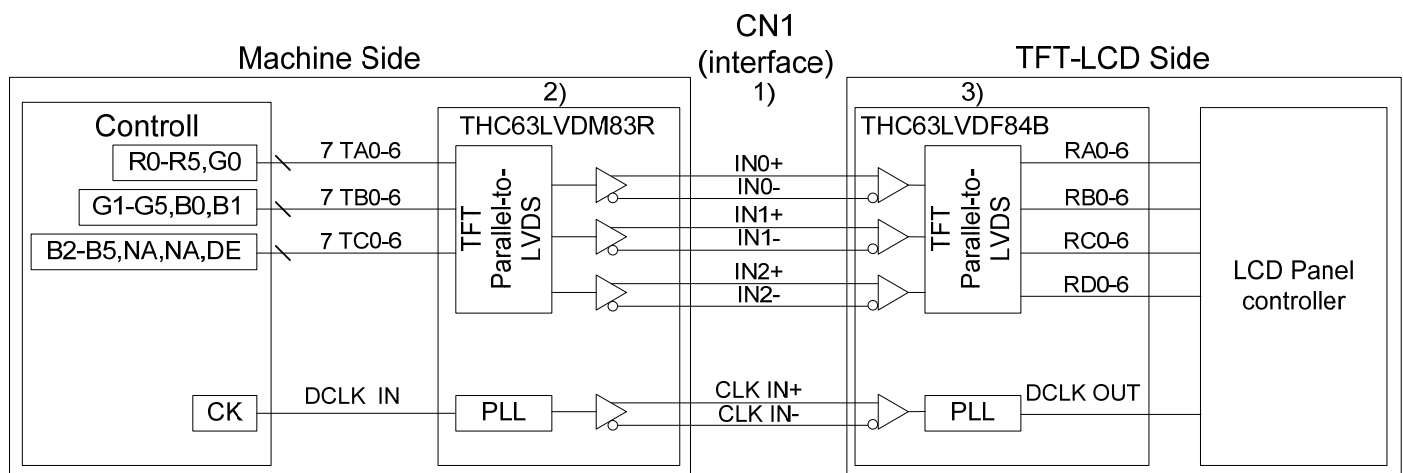
| Pin No. | Symbol | Signal |
|---------|-----------------|--|
| 1 | V _{DD} | Power Supply for Logic |
| 2 | V _{DD} | |
| 3 | V _{SS} | GND |
| 4 | V _{SS} | |
| 5 | IN0- | R0~R5, G0 |
| 6 | IN0+ | |
| 7 | V _{SS} | GND |
| 8 | IN1- | G1~G5, B0~B1 |
| 9 | IN1+ | |
| 10 | V _{SS} | GND |
| 11 | IN2- | B2~B5, DE |
| 12 | IN2+ | |
| 13 | V _{SS} | GND |
| 14 | CLK IN- | Pixel Clock |
| 15 | CLK IN+ | |
| 16 | V _{SS} | GND |
| 17 | NC | No Connection |
| 18 | NC | |
| 19 | SD | Normal Scan: Low or Open Reverse Scan: High |
| 20 | DIM | Normal Brightness: 0V or 0% PWM Duty Brightness Control: 0V to 3.3 VDC or 0% to 100% PWM Duty |

Note 1: IN n- and IN n+ (n=0, 1, 2), CLK IN- and CLK IN+ should be wired by twist-pairs or side-by-side FPC patterns, respectively.

The backlight connector (CN2) is SM02(8.0)B-BHS-1-TB (LF)(SN) made by JST, and pin assignment is as below:

| Pin No. | Symbol | Signal |
|---------|------------------|--------|
| 1 | V _{LED} | 12VDC |
| 2 | GND | Ground |

9.2 LVDS INTERFACE

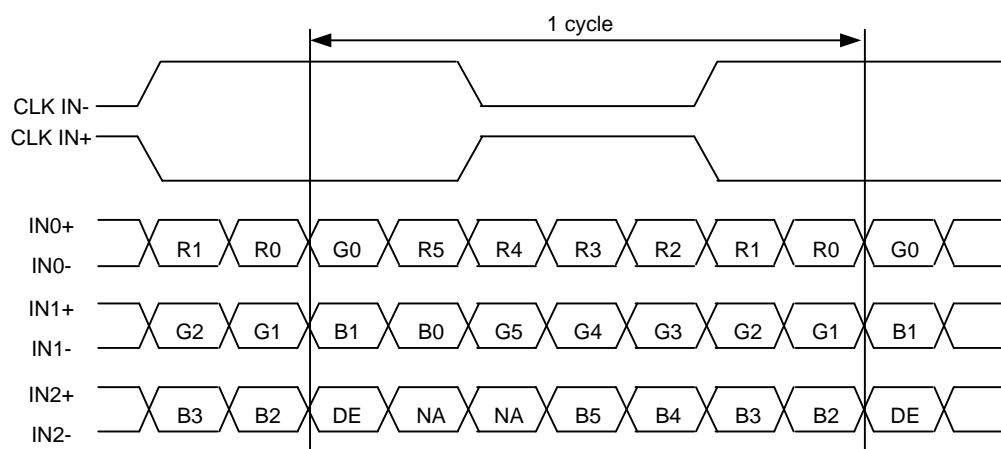


Note 1: LVDS cable impedance should be 100 ohms per signal line when each 2-lines (+, -) is used in differential mode.

Note 2: The recommended transmitter, THC63LVDM83R, is made by Thine or equivalent, which is not contained in the module.

Note 3: The receiver built-in the module is THC63LVDF84B made by Thine.

9.3 LVDS DATA FORMAT



DE: Display Enable

NA: Not Available

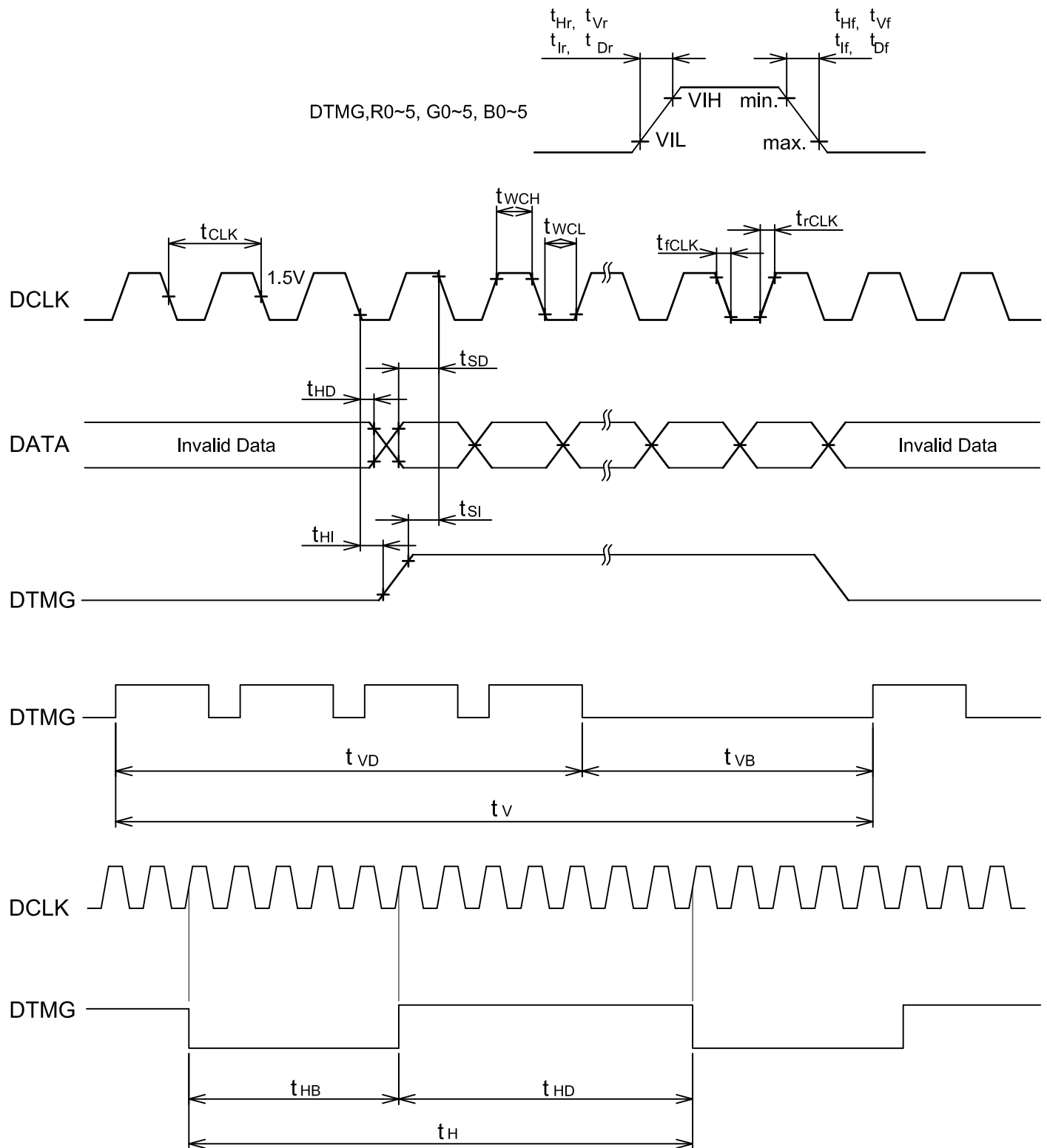
9.4 INTERFACE TIMING SPECIFICATIONS

The column of timing sets including minimum, typical, and maximum as below are based on the best optical performance, frame frequency (Vsync) = 60 Hz to define. If 60 Hz is not the aim to set, less than 66 Hz for Vsync is recommended to apply for better performance by other parameter combination as the definitions in section 5.1.

| Item | | Symbol | Min. | Typ. | Max. | Unit |
|------|-----------------------------|----------------------|-------|------|------|-----------|
| DCLK | Cycle frequency | $1/t_{CLK}$ | 22.29 | 25.2 | 34.2 | MHz |
| | Low level width | t_{WCL} | 10 | - | - | ns |
| | High level width | t_{WCH} | 10 | - | - | |
| | Rise / Fall time | t_{rCLK}, t_{fCLK} | - | - | 12 | |
| | Duty | D | 0.4 | 0.5 | 0.6 | - |
| DTMG | Set up time | t_{SI} | 8 | - | - | ns |
| | Hold time | t_{HI} | 8 | - | - | |
| | Rise / Fall time | t_{Ir}, t_{If} | - | - | 12 | ns |
| | Horizontal cycle | t_H | 750 | 800 | 1000 | t_{CLK} |
| | Horizontal valid data width | t_{HD} | 640 | 640 | 640 | |
| | Horizontal porch width | t_{HB} | 110 | 160 | 360 | |
| | Vertical cycle | t_V | 495 | 525 | 570 | t_H |
| | Vertical valid data width | t_{VD} | 480 | 480 | 480 | |
| | Vertical porch width | t_{VB} | 15 | 45 | 110 | |
| Data | Set up time | t_{SD} | 8 | - | - | ns |
| | Hold time | t_{HD} | 8 | - | - | |
| | Rise / Fall time | t_{Dr}, t_{Df} | - | - | 12 | ns |

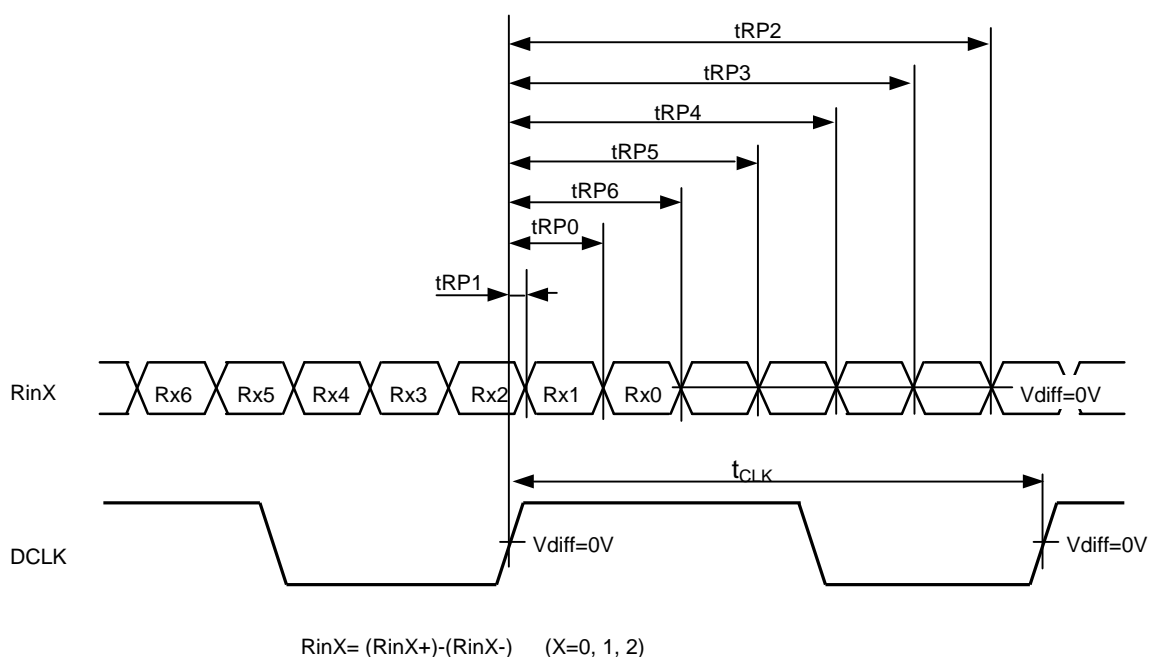
9.5 TIMING CHART

DTMG (Data Enable) is the signal to determine valid data, and the timing of DTMG can be determined from Hsync and Vsync as below. For this display, only DTMG and DCLK are the essential signals. Hsync and Vsync are not necessary to connect to display interface after DTMG has been generated and input.



Data is latched by DCLK'S falling edge

9.6 LVDS RECEIVER TIMING

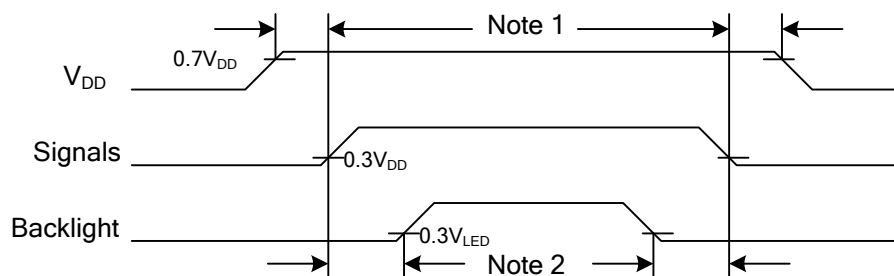


| | Item | Symbol | Min. | Typ. | Max. | Unit |
|-------------------------|-------------------|-------------|------------------------|-----------------|------------------------|------|
| DCLK | Frequency | $1/t_{CLK}$ | 22.29 | 25.2 | 34.2 | MHz |
| $RinX$ ($X=0,1,2$) | 0 data position | $tRP0$ | $1/7 * t_{CLK} - 0.49$ | $1/7 * t_{CLK}$ | $1/7 * t_{CLK} + 0.49$ | ns |
| | 1st data position | $tRP1$ | -0.49 | 0 | +0.49 | |
| | 2nd data position | $tRP2$ | $6/7 * t_{CLK} - 0.49$ | $6/7 * t_{CLK}$ | $6/7 * t_{CLK} + 0.49$ | |
| | 3rd data position | $tRP3$ | $5/7 * t_{CLK} - 0.49$ | $5/7 * t_{CLK}$ | $5/7 * t_{CLK} + 0.49$ | |
| | 4th data position | $tRP4$ | $4/7 * t_{CLK} - 0.49$ | $4/7 * t_{CLK}$ | $4/7 * t_{CLK} + 0.49$ | |
| | 5th data position | $tRP5$ | $3/7 * t_{CLK} - 0.49$ | $3/7 * t_{CLK}$ | $3/7 * t_{CLK} + 0.49$ | |
| | 6th data position | $tRP6$ | $2/7 * t_{CLK} - 0.49$ | $2/7 * t_{CLK}$ | $2/7 * t_{CLK} + 0.49$ | |

9.7 DATA INPUT for DISPLAY COLOR

| | COLOR & Gray Scale | Data Signal | | | | | | | | | | | | | | | | | |
|----------------|-----------------------|-------------|----|----|----|----|----|----|----|----|----|----|----|----|----|----|----|----|----|
| | | R5 | R4 | R3 | R2 | R1 | R0 | G5 | G4 | G3 | G2 | G1 | G0 | B5 | B4 | B3 | B2 | B1 | B0 |
| Basic Color | Black | 0 | 0 | 0 | 0 | 0 | 0 | 0 | 0 | 0 | 0 | 0 | 0 | 0 | 0 | 0 | 0 | 0 | 0 |
| | Red (0) | 1 | 1 | 1 | 1 | 1 | 1 | 0 | 0 | 0 | 0 | 0 | 0 | 0 | 0 | 0 | 0 | 0 | 0 |
| | Green (0) | 0 | 0 | 0 | 0 | 0 | 0 | 1 | 1 | 1 | 1 | 1 | 1 | 0 | 0 | 0 | 0 | 0 | 0 |
| | Blue (0) | 0 | 0 | 0 | 0 | 0 | 0 | 0 | 0 | 0 | 0 | 0 | 0 | 1 | 1 | 1 | 1 | 1 | 1 |
| | Cyan | 0 | 0 | 0 | 0 | 0 | 0 | 1 | 1 | 1 | 1 | 1 | 1 | 1 | 1 | 1 | 1 | 1 | 1 |
| | Magenta | 1 | 1 | 1 | 1 | 1 | 1 | 0 | 0 | 0 | 0 | 0 | 0 | 1 | 1 | 1 | 1 | 1 | 1 |
| | Yellow | 1 | 1 | 1 | 1 | 1 | 1 | 1 | 1 | 1 | 1 | 1 | 1 | 0 | 0 | 0 | 0 | 0 | 0 |
| | White | 1 | 1 | 1 | 1 | 1 | 1 | 1 | 1 | 1 | 1 | 1 | 1 | 1 | 1 | 1 | 1 | 1 | 1 |
| Red | Black | 0 | 0 | 0 | 0 | 0 | 0 | 0 | 0 | 0 | 0 | 0 | 0 | 0 | 0 | 0 | 0 | 0 | 0 |
| | Red (62) | 0 | 0 | 0 | 0 | 0 | 1 | 0 | 0 | 0 | 0 | 0 | 0 | 0 | 0 | 0 | 0 | 0 | 0 |
| | Red (61) | 0 | 0 | 0 | 0 | 1 | 0 | 0 | 0 | 0 | 0 | 0 | 0 | 0 | 0 | 0 | 0 | 0 | 0 |
| | : | : | : | : | : | : | : | : | : | : | : | : | : | : | : | : | : | : | : |
| | : | : | : | : | : | : | : | : | : | : | : | : | : | : | : | : | : | : | : |
| | Red (1) | 1 | 1 | 1 | 1 | 1 | 0 | 0 | 0 | 0 | 0 | 0 | 0 | 0 | 0 | 0 | 0 | 0 | 0 |
| | Red (0) | 1 | 1 | 1 | 1 | 1 | 1 | 0 | 0 | 0 | 0 | 0 | 0 | 0 | 0 | 0 | 0 | 0 | 0 |
| Green | Black | 0 | 0 | 0 | 0 | 0 | 0 | 0 | 0 | 0 | 0 | 0 | 0 | 0 | 0 | 0 | 0 | 0 | 0 |
| | Green (62) | 0 | 0 | 0 | 0 | 0 | 0 | 0 | 0 | 0 | 0 | 0 | 1 | 0 | 0 | 0 | 0 | 0 | 0 |
| | Green (61) | 0 | 0 | 0 | 0 | 0 | 0 | 0 | 0 | 0 | 0 | 1 | 0 | 0 | 0 | 0 | 0 | 0 | 0 |
| | : | : | : | : | : | : | : | : | : | : | : | : | : | : | : | : | : | : | : |
| | : | : | : | : | : | : | : | : | : | : | : | : | : | : | : | : | : | : | : |
| | Green (1) | 0 | 0 | 0 | 0 | 0 | 0 | 1 | 1 | 1 | 1 | 1 | 0 | 0 | 0 | 0 | 0 | 0 | 0 |
| | Green (0) | 0 | 0 | 0 | 0 | 0 | 0 | 1 | 1 | 1 | 1 | 1 | 1 | 0 | 0 | 0 | 0 | 0 | 0 |
| Blue | Black | 0 | 0 | 0 | 0 | 0 | 0 | 0 | 0 | 0 | 0 | 0 | 0 | 0 | 0 | 0 | 0 | 0 | 0 |
| | Blue (62) | 0 | 0 | 0 | 0 | 0 | 0 | 0 | 0 | 0 | 0 | 0 | 0 | 0 | 0 | 0 | 0 | 0 | 1 |
| | Blue (61) | 0 | 0 | 0 | 0 | 0 | 0 | 0 | 0 | 0 | 0 | 0 | 0 | 0 | 0 | 0 | 0 | 1 | 0 |
| | : | : | : | : | : | : | : | : | : | : | : | : | : | : | : | : | : | : | : |
| | : | : | : | : | : | : | : | : | : | : | : | : | : | : | : | : | : | : | : |
| | Blue (1) | 0 | 0 | 0 | 0 | 0 | 0 | 0 | 0 | 0 | 0 | 0 | 0 | 1 | 1 | 1 | 1 | 1 | 0 |
| | Blue (0) | 0 | 0 | 0 | 0 | 0 | 0 | 0 | 0 | 0 | 0 | 0 | 0 | 1 | 1 | 1 | 1 | 1 | 1 |

9.8 POWER SEQUENCE



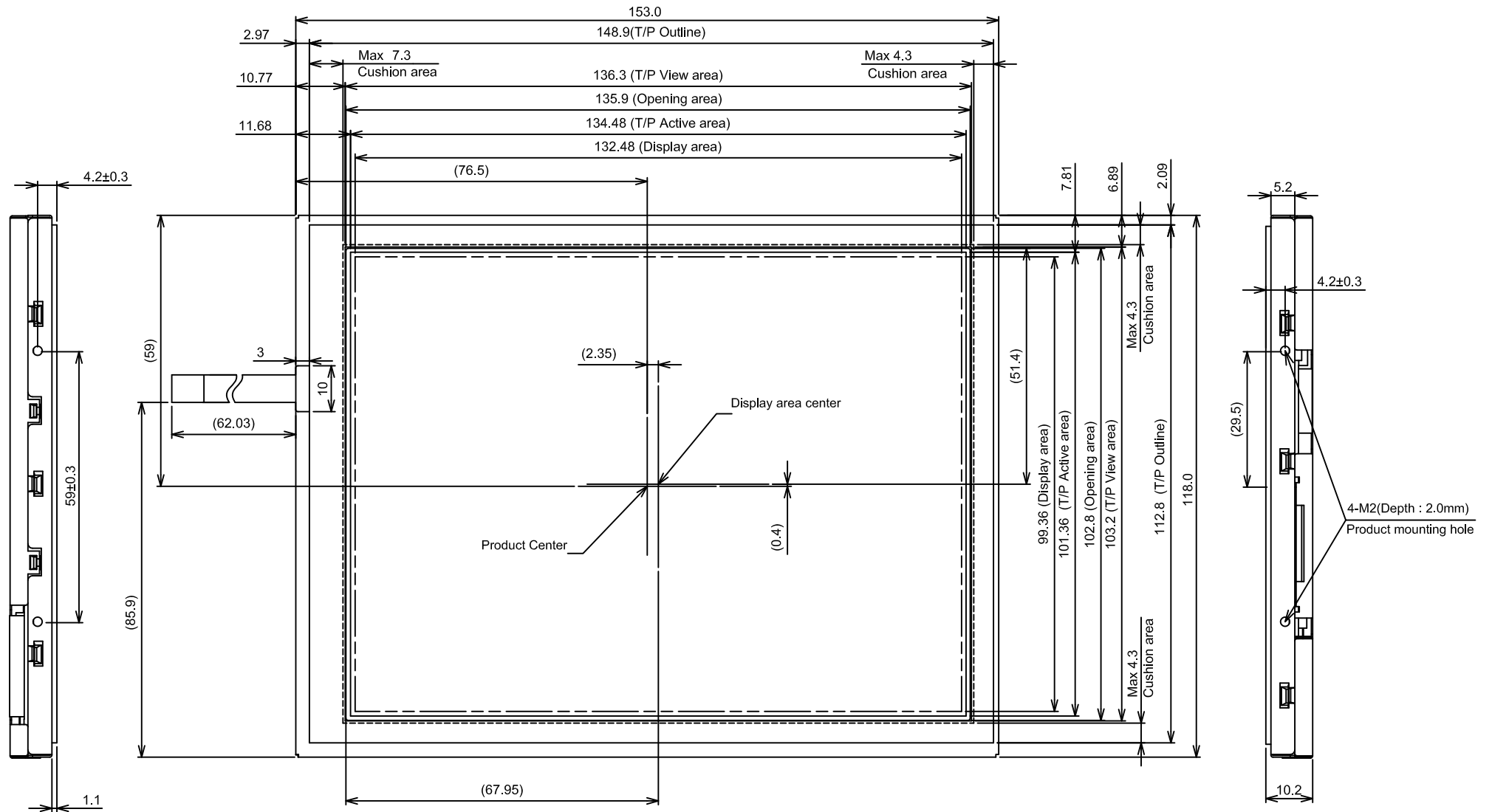
Power Sequence Timing

Note 1: In order to avoid any damages, V_{DD} has to be applied before all other signals. The opposite is true for power off where V_{DD} has to be remained on until all other signals have been switch off. The recommended time period is 1 second. Hot plugging might cause display damage due to incorrect power sequence, please pay attention on interface connecting before power on.

Note 2: In order to avoid showing uncompleted patterns in transient state. It is recommended that switching the backlight on is delayed for 1 second after the signals have been applied. The opposite is true for power off where the backlight has to be switched off 1 second before the signals are removed.

10. OUTLINE DIMENSIONS

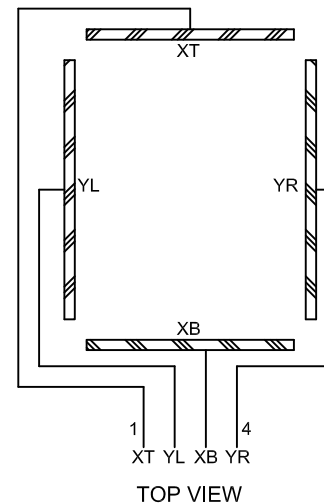
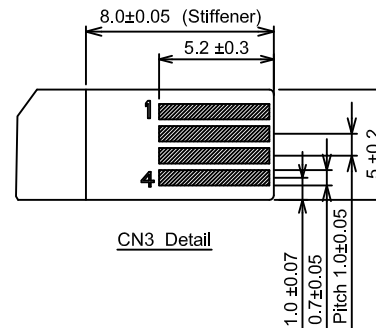
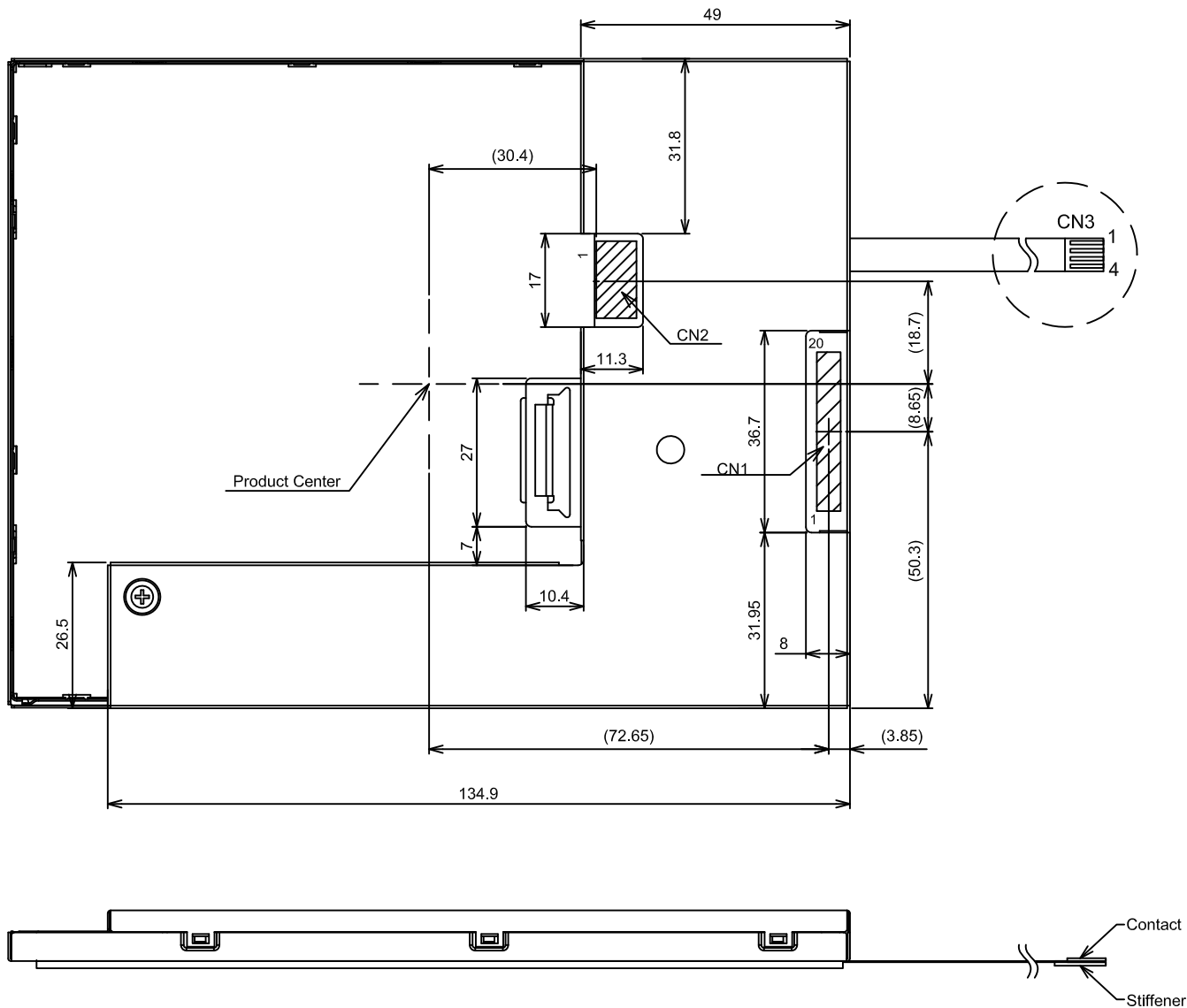
10.1 FRONT VIEW



Scale : NTS
Unit : mm

Note 1: General tolerance ±0.5

10.2 REAR VIEW



Note 1: General tolerance ± 0.5

Scale : NTS
Unit : mm

11. TOUCH PANEL

The type of touch panel used on this display is resistive, analog, 4-wire and film on glass, and more characteristics are shown as below:

11.1 OPERATING CONDITIONS

| Item | Specification | Remarks |
|-------------------|---------------|------------|
| Operating Voltage | DC 5V | DC 7V Max. |
| Operating Current | 20mA | - |

11.2 ELECTRICAL CHARACTERISTICS

| Item | Specification | Remarks |
|-----------------------|--------------------|-------------------|
| Circuit resistance | X- axis | 300~1100 Ω |
| | Y-axis | 100~800 Ω |
| Insulation Resistance | X-Y | >20M Ω |
| Linearity | X | $\leq \pm 1.5\%$ |
| | Y | $\leq \pm 1.5\%$ |
| Chattering | $\leq 10\text{ms}$ | - |

Note 1: The test conditions and equipments of linearity are as below:

- Material of pen: poly-acetal resin
- End shape: R 0.8 mm
- Test force: 150 gf
- Pitch: 10 mm
- Test area is shown in Fig. 11.1

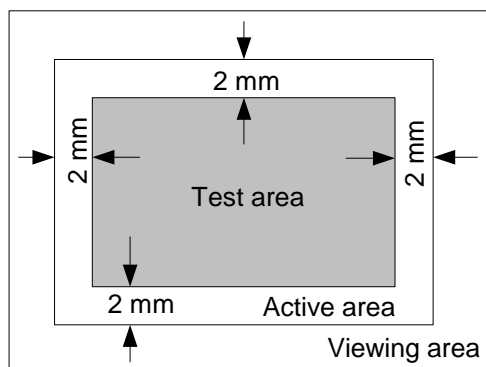


Fig. 11.1

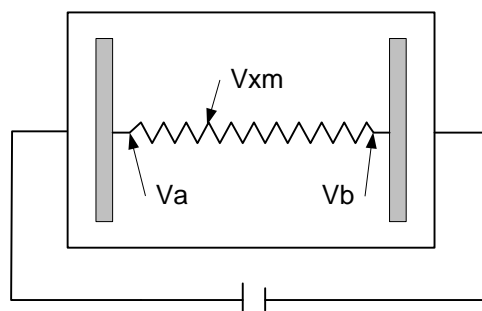


Fig. 11.2

As shown in Fig. 11.2, applying voltage meter to measure Va, Vb and Vxm, where Va is the maximum voltage in the active area; Vb is the minimum voltage in the active area; Vxm is the measured voltage of point x selected by random. Afterwards, the linearity can be calculated by following equation:

$$Linearity = \frac{|V_{xi} - V_{xm}|}{V_a - V_b} \times 100\%$$

where Vxi is the idea voltage of point x.

The method to measure the linearity of Y-axis is the same as above.

11.3 MECHANICAL CHARACTERISTICS

| Item | | Specification | Remarks |
|------------------|--------|---------------|--------------------|
| Activation force | Finger | 20gf ~ 80gf | End shape: R8.0 mm |
| | Pen | 20gf ~ 80gf | End shape: R0.8 mm |
| Surface Hardness | | 3H | JIS K5600-5-4 |

11.4 OPTICAL CHARACTERISTICS

| Item | Specification | Remarks |
|---------------|---------------|---------|
| Transmittance | >77% | - |

11.5 SAFETY AND ATTENTIONS

- 1) Do not put heavy shock or stress on the touch panel.
- 2) Please use soft cloth or absorbent cotton with ethanol to clean the touch panel by gently wiping. Moreover, please wipe it by horizontal or vertical direction instead of circling to prevent leaving scars on the touch panel's surface.
- 3) Do not use any harmful chemicals such as acetone, toluene, and isopropyl alcohol to clean the display's surface.
- 4) UV protection is recommended to avoid the possibility of performance degrading when touch panel is likely applied under UV environment for a long period of time.

12. APPEARANCE STANDARD

The appearance inspection is performed in a dark room around 500~1000 lx based on the conditions as below:

- The distance between inspector's eyes and display is 30 cm.
- The viewing zone is defined with angle θ shown in Fig. 12.1 The inspection should be performed within 45° when display is shut down. The inspection should be performed within 5° when display is power on.

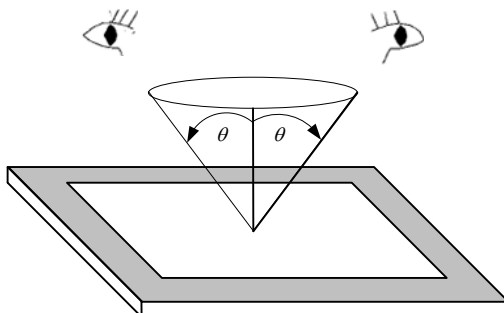


Fig. 12.1

12.1 THE DEFINITION OF LCD ZONE

LCD panel is divided into 3 areas as shown in Fig.12.2 for appearance specification in next section. A zone is the LCD active area (dot area); B zone is the area, which extended 1 mm out from LCD active area; C zone is the area between B zone and metal frame.

In terms of housing design, B zone is the recommended window area customers' housing should be located in.

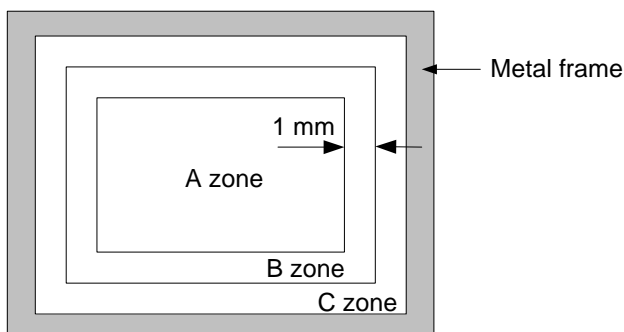


Fig. 12.2

12.2 LCD APPEARANCE SPECIFICATION

The specification as below is defined as the amount of unexpected phenomenon or material in different zones of LCD panel. The definitions of length, width and average diameter using in the table are shown in Fig. 12.3 and Fig. 12.4.

| Item | Criteria | | | | Applied zone |
|---|---------------------------------------|-------------------------|----------------|---------------|--------------|
| Scratches | Length (mm) | Width (mm) | Maximum number | Minimum space | A, B |
| | Ignored | $W \leq 0.02$ | Ignored | - | |
| | $L \leq 40$ | $0.02 < W \leq 0.04$ | 10 | - | |
| | $L \leq 20$ | $W \leq 0.04$ | 10 | - | |
| Dent | Serious one is not allowed | | | | A |
| Wrinkles in polarizer | Serious one is not allowed | | | | A |
| Bubbles on polarizer | Average diameter (mm) | | Maximum number | | A |
| | $D \leq 0.3$ | | Ignored | | |
| | $0.3 < D \leq 0.5$ | | 12 | | |
| | $0.5 < D$ | | 3 | | |
| 1) Stains 2) Foreign Materials 3) Dark Spot | Filamentous (Line shape) | | | | A, B |
| | Length (mm) | Width (mm) | Maximum number | | |
| | $L \leq 2.0$ | $W \leq 0.03$ | Ignored | | |
| | $L \leq 3.0$ | $0.03 < W \leq 0.05$ | 10 | | |
| | $L \leq 2.5$ | $0.05 < W \leq 0.1$ | 1 | | |
| | Round (Dot shape) | | | | A, B |
| | Average diameter (mm) | Maximum number | Minimum Space | | |
| | $D < 0.2$ | Ignored | - | | |
| | $0.2 \leq D < 0.3$ | 10 | 10 mm | | |
| | $0.3 \leq D < 0.4$ | 5 | 30 mm | | |
| | $0.4 \leq D$ | None | - | | |
| | In total | Filamentous + Round=10 | | | |
| | Those wiped out easily are acceptable | | | | |
| Dot-Defect (Note 1) | | Type | Maximum number | | A |
| | Bright dot-defect | 1 dot | 4 | | |
| | | 2 adjacent dot | 1 | | |
| | | 3 adjacent dot or above | Not allowed | | |
| | | In total | 5 | | |
| | Dark dot-defect | 1 dot | 5 | | |
| | | 2 adjacent dot | 2 | | |
| | | 3 adjacent dot or above | Not allowed | | |
| | | In total | 5 | | |
| | In total | | | 10 | |

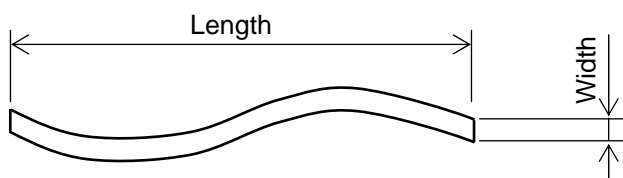


Fig 12.3



Fig 12.4

Note 1: The definitions of dot defect are as below:

- The defect area of the dot must be bigger than half of a dot.
- For bright dot-defect, showing black pattern, the dot's brightness must be over 30% brighter than others.
- For dark dot-defect, showing white pattern, the dot's brightness must be under 70% darker than others.
- The definition of 1-dot-defect is the defect-dot, which is isolated and no adjacent defect-dot.
- The definition of adjacent dot is shown as Fig. 12.5.

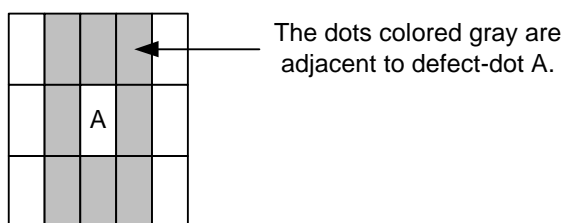


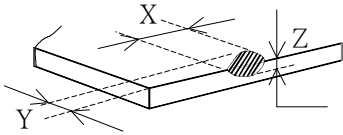
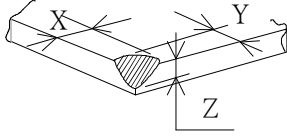
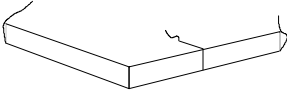
Fig. 12.5

12.3 TOUCH PANEL APPEARANCE SPECIFICATION

The specification as below is defined by the amount of unexpected material in different zones of touch panel.

| Item | Criteria | | | Applied zone |
|-------------------|--------------------------|-------------|-----------------|--------------|
| Scratches | Width (mm) | Length (mm) | Maximum number | A, B |
| | $W > 0.1$ | $L \geq 10$ | Not allowed | |
| | $0.10 > W \geq 0.05$ | $L < 10$ | 4 pcs max. | |
| | $0.05 \geq W$ | $L < 10$ | Ignored | |
| Foreign Materials | Filamentous (Line shape) | | | A, B |
| | Width (mm) | Length (mm) | Maximum number | |
| | $W > 0.10$ | - | Dust (circular) | |
| | $0.10 \geq W > 0.05$ | $3 < L$ | Not allowed | |
| | $0.05 \geq W$ | $L \leq 3$ | Ignored | |
| | Round (Dot shape) | | | A, B |
| | Average diameter (mm) | | Maximum number | |
| | $D > 0.3$ | | Not allowed | |
| | $0.3 \geq D > 0.2$ | | 3 pcs max. | |
| | $D \leq 0.2$ | | Ignored | |

The limitation of glass flaw occurred on touch panel is defined in the table as below.

| Item | Specifications | |
|------------------|---|---|
| Edge flaw |  | $X \leq 5.0 \text{ mm}$ $Y \leq 1.0 \text{ mm}$ $Z \leq \text{Thickness}$ |
| Corner flaw |  | $X \leq 3.0 \text{ mm}$ $Y \leq 3.0 \text{ mm}$ $Z \leq \text{Thickness}$ |
| Progressive flaw |  | Not allowed |

13. PRECAUTIONS

13.1 PRECAUTIONS of TOUCH PANEL

- 1) Please refer to Fig. 13.1 for housing the display with touch panel into applications. The Fig. 13.1 shows some points as below:
 - The cushion needs to be designed between housing and touch panel in order to avoid unexpected pressure to cause any wrong reactions, and the cushion should be located in the cushion area.
 - The housing should not cover the active area of touch panel as the figure shown.

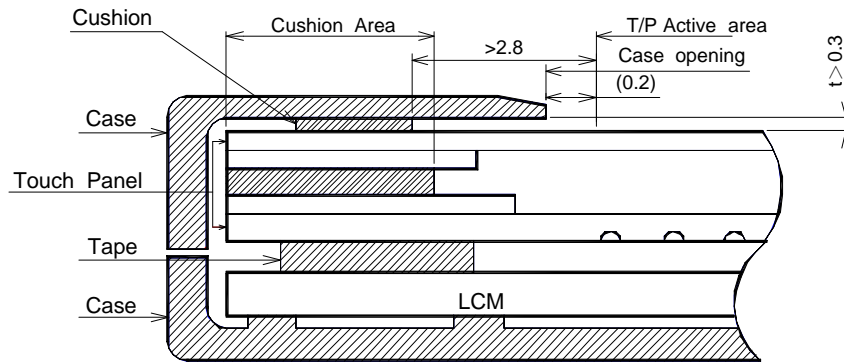


Fig. 13.1

13.2 PRECAUTIONS of ESD

- 1) Before handling the display, please ensure your body has been connected to ground to avoid any damages by ESD. Also, do not touch display's interface directly when assembling.
- 2) Please remove the protection film very slowly before turning on the display to avoid generating ESD.

13.3 PRECAUTIONS of HANDLING

- 1) In order to keep the appearance of display in good condition, please do not rub any surfaces of the displays by using sharp tools harder than 3H, especially touch panel, metal frame and polarizer.
- 2) Please do not stack the displays as this may damage the surface. In order to avoid any injuries, please avoid touching the edge of the glass or metal frame and wore gloves during handling.
- 3) Touching the polarizer or terminal pins with bare hand should be avoided to prevent staining and poor electrical contact.
- 4) Do not use any harmful chemicals such as acetone, toluene, and isopropyl alcohol to clean display's surfaces.
- 5) Please use soft cloth or absorbent cotton with ethanol to clean the display by gently wiping. Moreover, when wiping the display, please wipe it by horizontal or vertical direction instead of circling to prevent leaving scars on the display's surface, especially polarizer.
- 6) Please wipe any unknown liquids immediately such as saliva, water or dew on the display to avoid color fading or any permanent damages.
- 7) Maximum pressure to the surface of the display must be less than 1.96×10^4 Pa. If the area of applied pressure is less than 1 cm^2 , the maximum pressure must be less than 1.96N.

13.4 PRECAUTIONS OF OPERATING

- 1) Please input signals and voltages to the displays according to the values defined in the section of electrical characteristics to obtain the best performance. Any voltages over than absolute maximum rating will cause permanent damages to this display. Also, any timing of the signals out of this specification would cause unexpected performance.
- 2) When the display is operating at significant low temperature, the response time will be slower than it at 25 C°. In high temperature, the color will be slightly dark and blue compared to original pattern. However, these are temperature-related phenomenon of LCD and it will not cause permanent damages to the display when used within the operating temperature.
- 3) The use of screen saver or sleep mode is recommended when static images are likely for long periods of time. This is to avoid the possibility of image sticking.
- 4) Spike noise can cause malfunction of the circuit. The recommended limitation of spike noise is no bigger than ± 100 mV.

13.5 PRECAUTIONS of STORAGE

If the displays are going to be stored for years, please be aware the following notices.

- 1) Please store the displays in a dark room to avoid any damages from sunlight and other sources of UV light.
- 2) The recommended long term storage temperature is between 10 C° ~35 C° and 55%~75% humidity to avoid causing bubbles between polarizer and LCD glasses, and polarizer peeling from LCD glasses.
- 3) It would be better to keep the displays in the container, which is shipped from KOE, and do not unpack it.
- 4) Please do not stick any labels on the display surface for a long time, especially on the polarizer.

14. DESIGNATION of LOT MARK

- 1) The lot mark is showing in Fig.14.1. First 4 digits are used to represent production lot, T represented made in Taiwan, and the last 6 digits are the serial number.

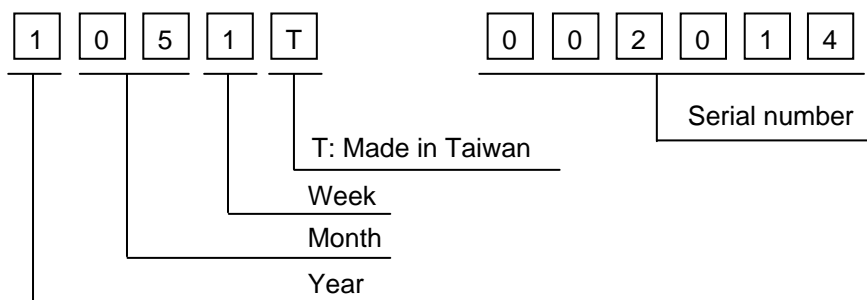


Fig. 14.1

- 2) The tables as below are showing what the first 4 digits of lot mark are shorted for.

| Year | Lot Mark | Month | Lot Mark | Month | Lot Mark | Week | Lot Mark |
|------|----------|-------|----------|-------|----------|------------|----------|
| 2013 | 3 | Jan. | 01 | Jul. | 07 | 1~7 days | 1 |
| 2014 | 4 | Feb. | 02 | Aug. | 08 | 8~14 days | 2 |
| 2015 | 5 | Mar. | 03 | Sep. | 09 | 15~21 days | 3 |
| 2016 | 6 | Apr. | 04 | Oct. | 10 | 22~28 days | 4 |
| 2017 | 7 | May | 05 | Nov. | 11 | 29~31 days | 5 |
| | | Jun. | 06 | Dec. | 12 | | |

- 3) Except letters I and O, revision number will be shown on lot mark and following letters A to Z.

| REV.No | ITEM | REMARKS |
|--------|-------------------------|----------|
| - | - | - |
| A | DC/DC Converter changed | PCN 0850 |

- 4) The location of the lot mark is on the back of the display shown in Fig. 14.2.

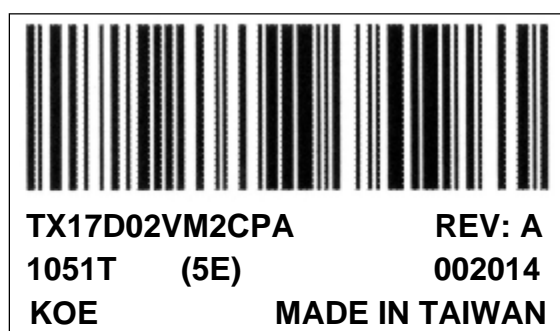


Fig. 14.2



ALL TECHNOLOGIES. ALL COMPETENCIES. ONE SPECIALIST.



DATA MODUL AG
Landsberger Straße 322
DE-80687 Munich
Phone: +49-89-56017-0

DATA MODUL WEIKERSHEIM GMBH
Lindenstraße 8
DE-97990 Weikersheim
Phone: +49-7934-101-0



More information and worldwide locations can be found at

www.data-modul.com