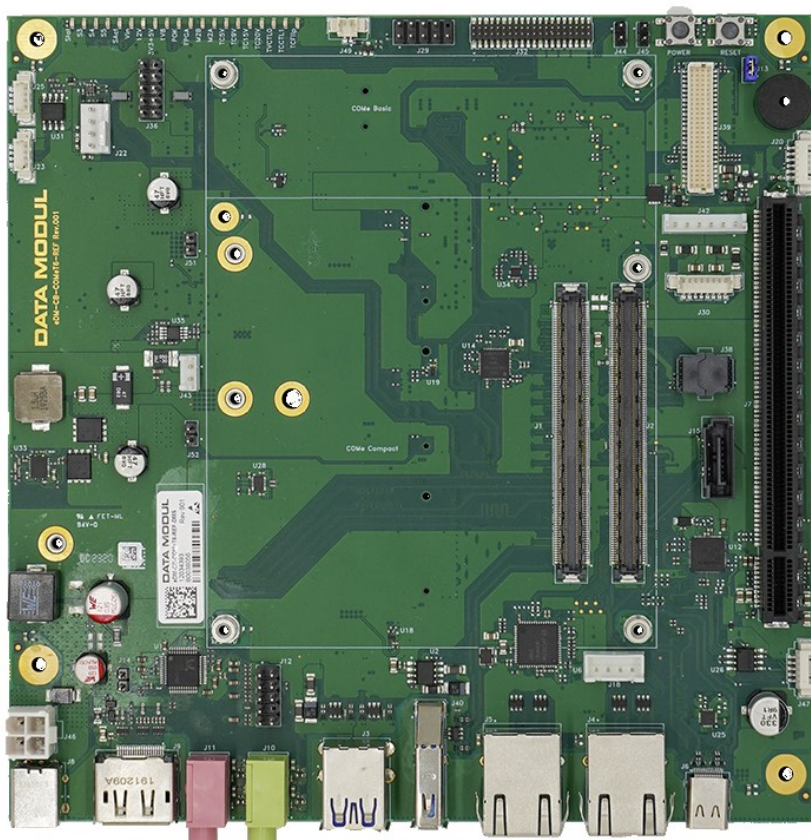


Datasheet

eDM-CB-COMeT6-REF



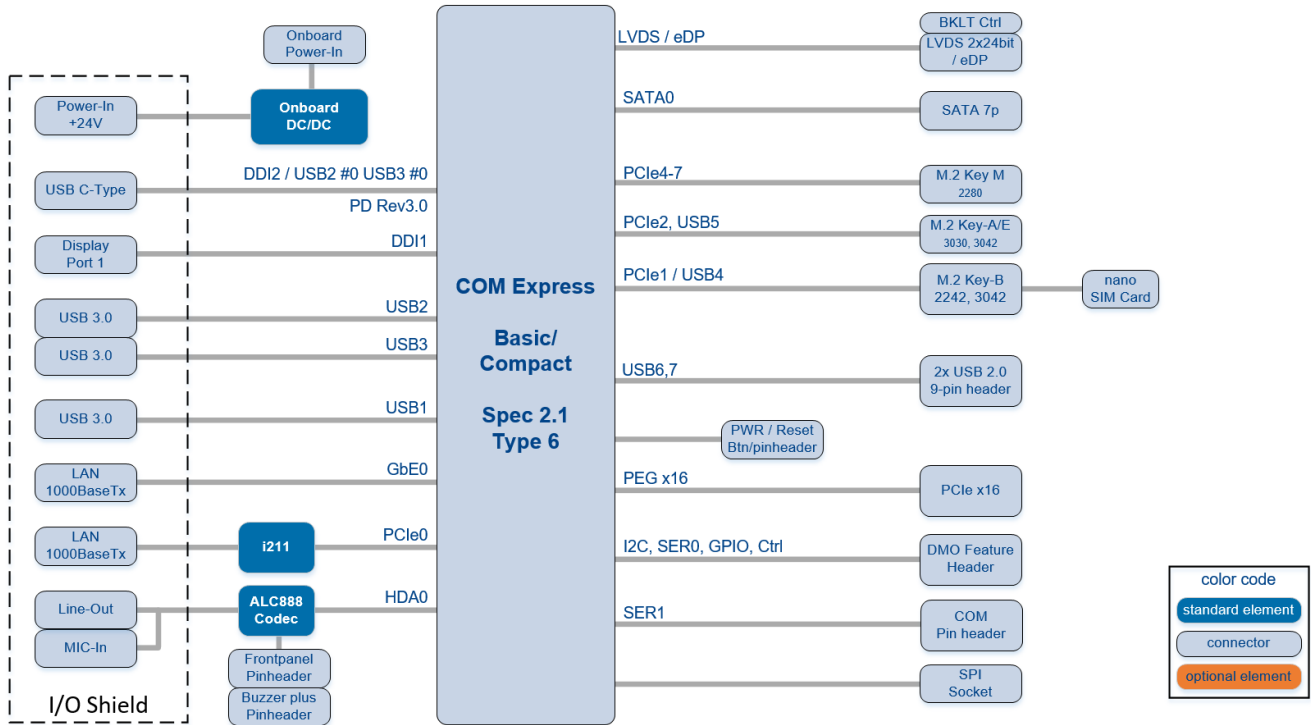
COM Express[®] Type 6 Carrier Board

- > Compliant to COM Express[®] Rev. 2.1 Pin-out Type 6
- > Mini-ITX Form Factor (170mm x 170mm)
- > M.2 Key-M supports PCIe x4
- > USB-C with alternate Mode DisplayPort
- > 2x Gigabit Ethernet RJ45

TECHNICAL INFORMATION

Formfactor	Mini-ITX
Dimension	170 x 170 mm
Ethernet	2x GbE RJ45 (1x from COMe Type 6 module, 1x Intel i211)
Display / Monitor interfaces	1x dual channel 24 bit LVDS shared with eDP 1x LVDS backlight 1x DisplayPort
M.2	1x M.2 Key-B 2242 / 3042 (1x PCIe, 1x USB 2.0, nano SIM socket) 1x M.2 Key-A 2230 / 2242 / 3042 (1x PCIe, 1x USB 2.0) 1x M.2 Key-M 2242 / 3042 (PCIe x4)
Feature Connector	DATA MODUL feature connector
Storage	1x SATA
Sound	1x Line-Out 1x Mic-In Front Panel Audio HD Audio Buzzer
USB	3x USB 3.0 2x USB 2.0 internal 1x USB-C with PD 3.0 and DisplayPort Alternate Mode
I/O interfaces	PEG Port 1x FAN 2x I2C (3,3 V, 5 V) 1x UART 1x SPI Front Panel Connector
Power Supply	24 V only
Temperature	Commercial grade 0 to +60°C operating, -15°C to +60°C storage
Humidity	Relative humidity operating: < 90% non-condensing
Safety, Shock and Vibration	Designed to meet EN60950, EN62638, UL60950, IEC/EN60068-2-27 and IEC/EN60068
Available Certificates	RoHS, REACH, UL

BLOCK DIAGRAM



eDM-CB-COMeT6-REF
Block Diagram rev12

ORDERING INFORMATION

Article	Part Nr.	Description
eDM-CB-COMeT6-REF	12034932	Reference Carrier Board for COM Express Type 6 Basic and Compact modules