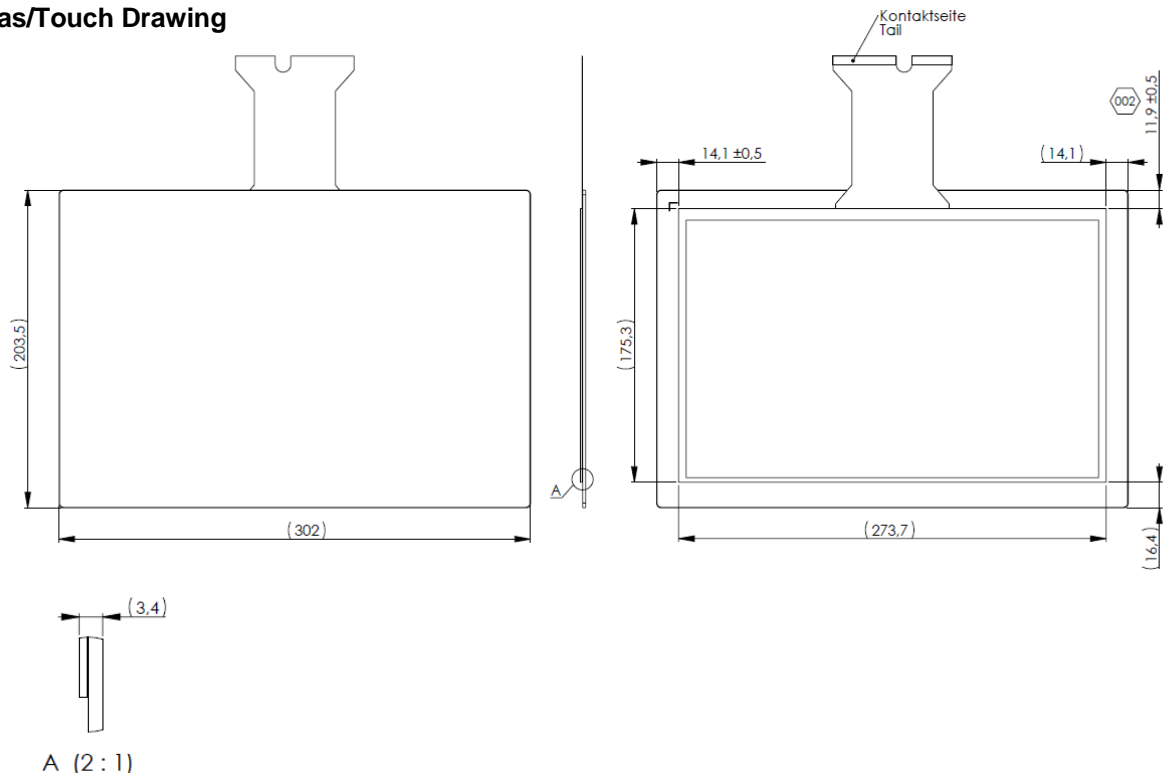




12.1 inch (30.7cm)
Part-No. 12031999
12.1" easyTOUCH Plus Glass/SITO (passive tail)
including mXT2952T2 USB Controller PCB

Glass and Touch	
Cover glass	2mm Glare glass, chemically strengthened, no treatment Printing RAL9005 organic Dimensions according to outline drawing
Touch sensor type	12.1" easyTOUCH SITO Sensor (12014891)
Format	Wide
Active area touch sensor (W x H) in mm	165.0 (H) x 264.1 (V)
Optical Specification	according to DATA MODUL Outgoing Specification 12005965
Assembling	
Glass to touch	Optically bonded
Touch Controller PCB	
Controller Type	mXT2952TD
Touch Interface	USB
Size	105 x 27 x 6mm
USB Connector	Mini USB or Molex 53261-0971 (or equivalent)
Power Supply	5V \pm 5%
Environmental conditions	
Temperature (operating)	-30 to 80 °C
Mechanical dimensions	
Outline dimensions (W x H x T) in mm	302.0 (H) x 203.5 (V) x 3.4 (T) Detailed dimensions according to outline drawing

Glas/Touch Drawing



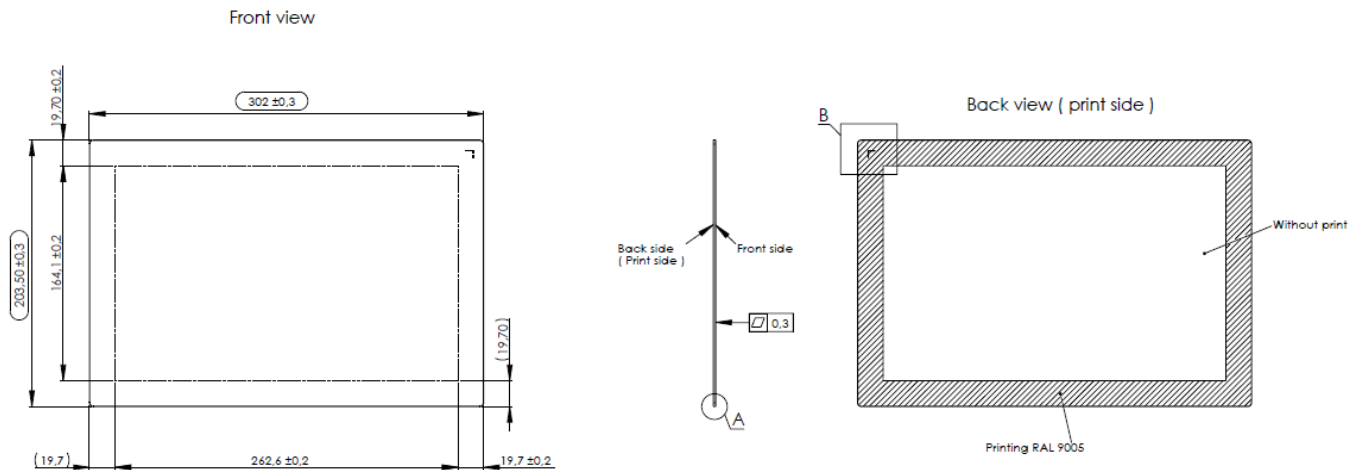
Technical specification subject to change without prior notice.

For further information, please refer to detailed specification of individual component.

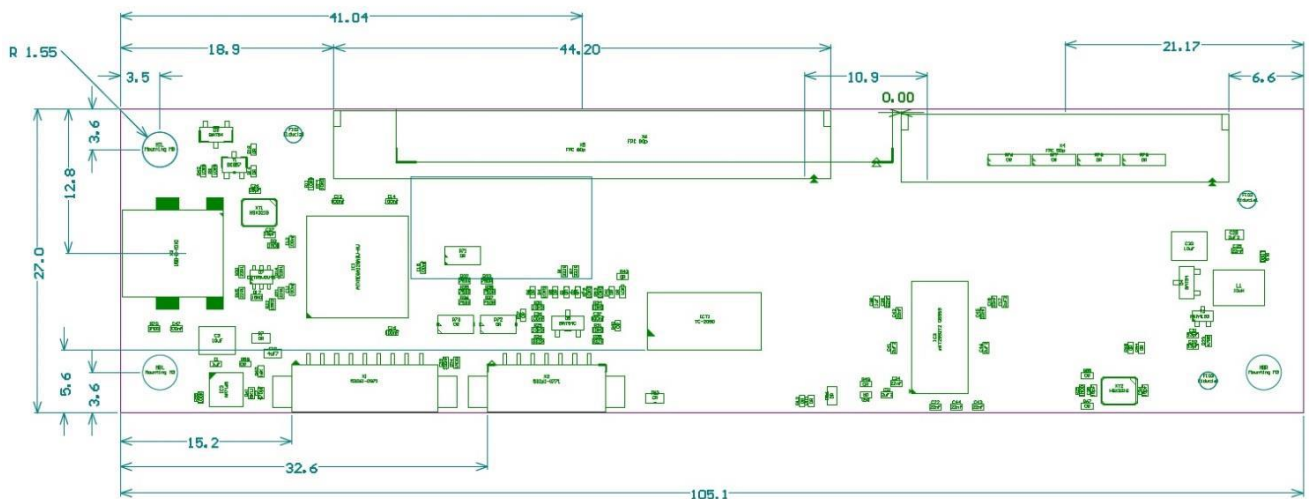
12.1" eT Plus Rev. 000

2020-07-23

Detailed Glass Drawing



Controller Drawing



Height: 6mm (including components)
All dimensions in mm